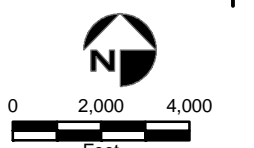


- Validated Detection Greater than or Equal to Maximum Contaminant Level/Health Advisories
- Validated Detection Less than Maximum Contaminant Level/Health Advisories
- Validated Non-Detect

- Data Pending
- Proposed Monitoring Well
- ⊕ Current Gun Position
- ⊕ Current Mortar Position
- ⊕ Old Gun Position
- ⊕ Old Mortar Position

- Validated Non-Detect Water Supply Well
- Validated Detection Less than Maximum Contaminant Level/Health Advisories Water Supply Well
- Proposed Water Supply Well
- Water Table Contour (Feet NGVD) AMEC, September 2003
- Military Range Areas

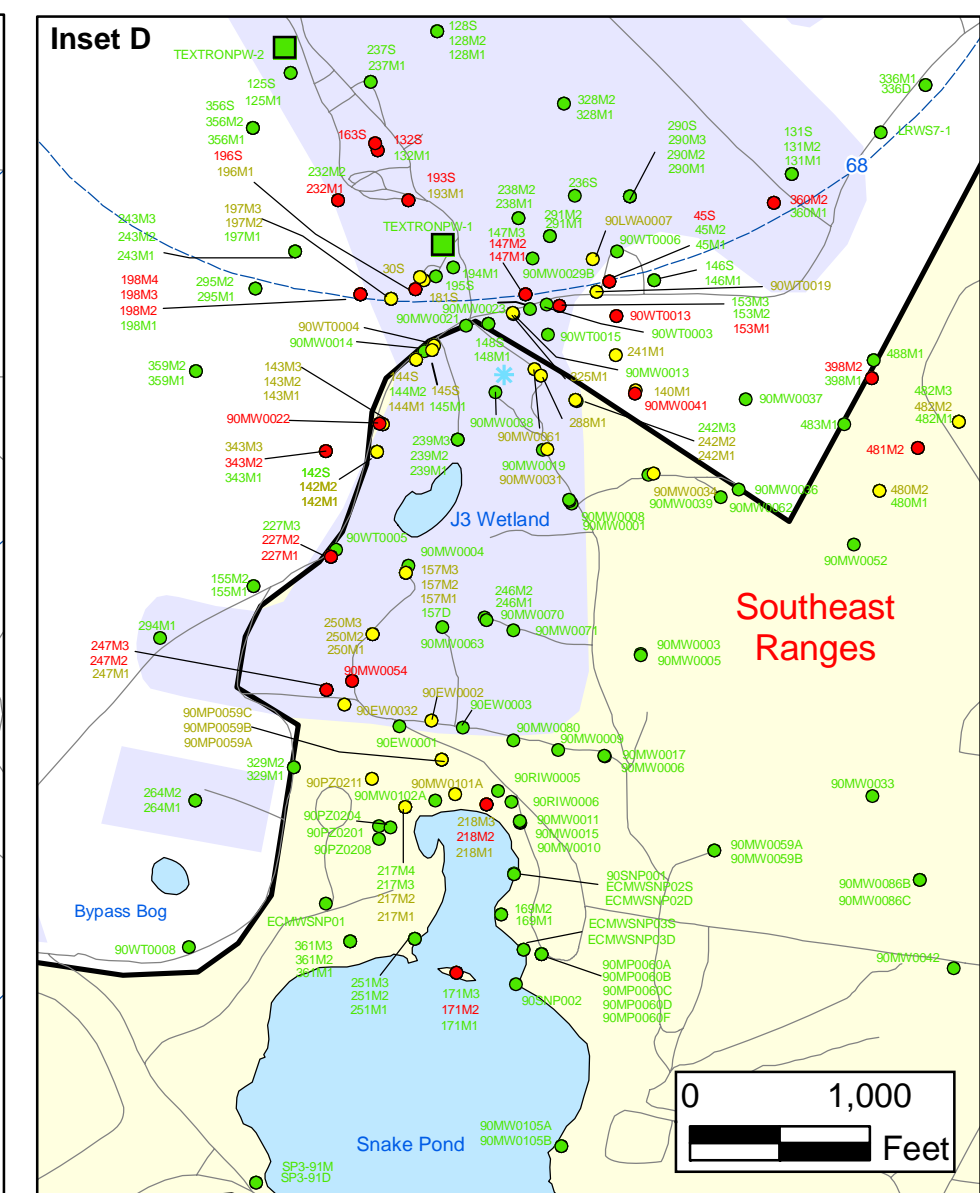
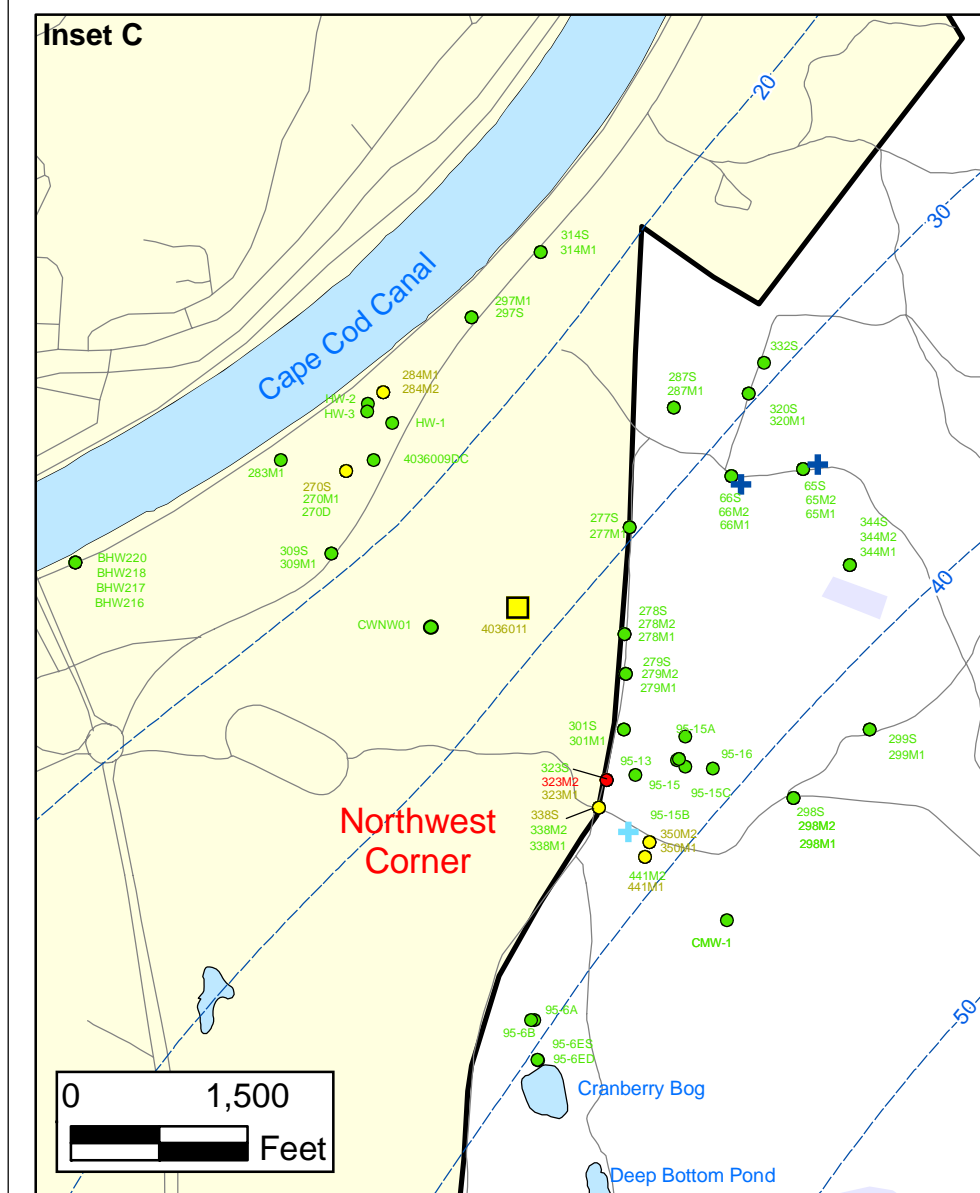
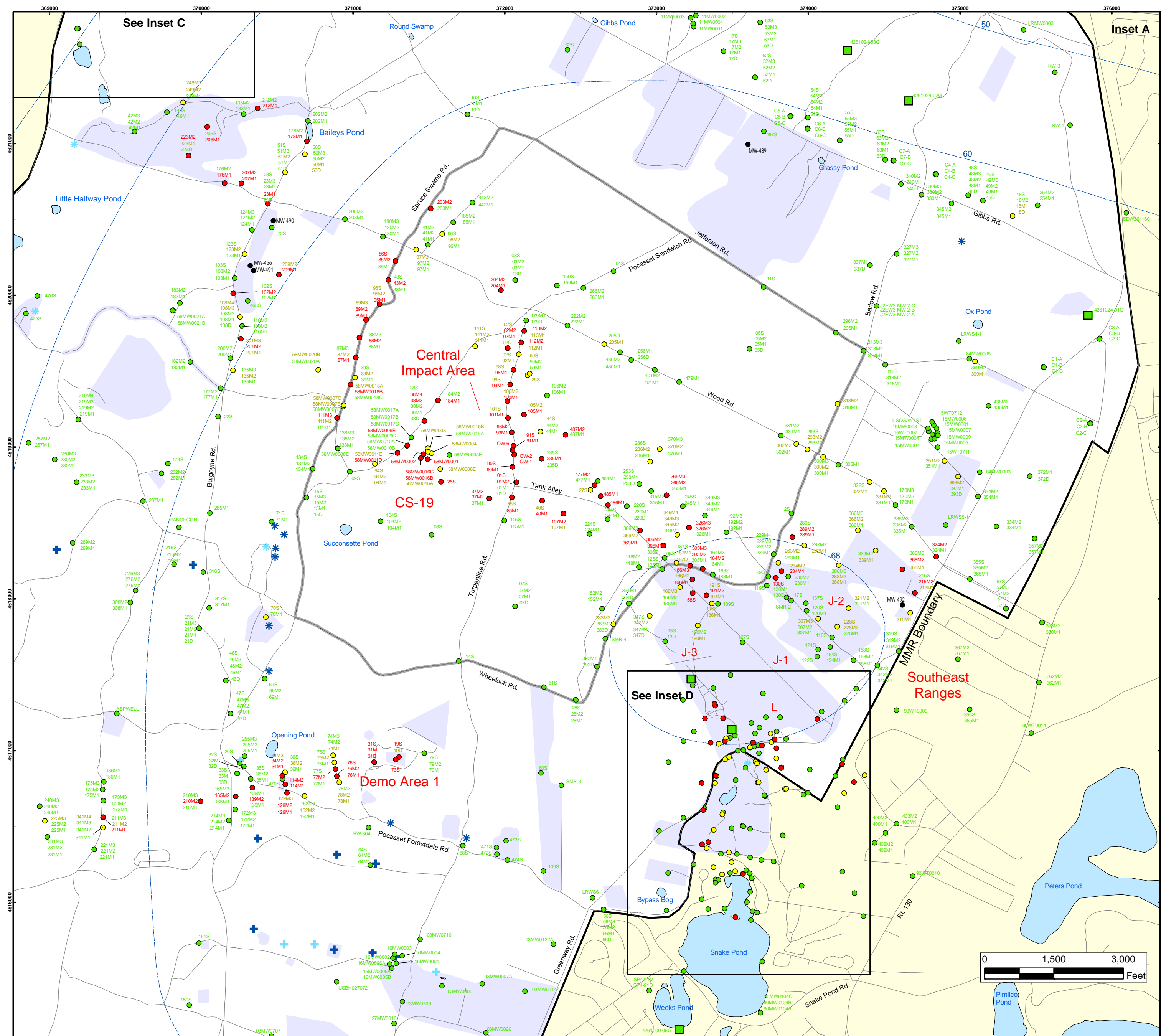


Note: Map dot colors are representative of the highest historical concentration at each well and not the current concentration level. Historical data presented on this figure range from November 1996 through 2007.

Sources & Notes
 Base map data from US Geological Survey
 7 1/2 minute Topographic Maps.
 Source: Office of Geographic and
 Environmental Information (MassGIS)
 Commonwealth of Massachusetts
 Executive Office of Environmental Affairs

Explosives in Groundwater Compared to Maximum Contaminant Level/Health Advisories
Validated Data as of 7/27/07

FIGURE 1



Explosives in Groundwater Compared to Maximum Contaminant Level/Health Advisories

Validated Data as of 7/27/07

- Validated Detection Greater than or Equal to Maximum Contaminant Level/Health Advisories
- Validated Detection Less than Maximum Contaminant Level/Health Advisories
- Validated Non-Detect
- Data Pending
- Proposed Monitoring Well
- Military Range Areas
- ⊕ Current Gun Position
- ⊕ Current Mortar Position
- ⊕ Old Gun Position
- ⊕ Old Mortar Position
- Validated Non-Detect Water Supply Well
- Validated Detection Less than Maximum Contaminant Level/Health Advisories Water Supply Well
- Water Table Contour (Feet NGVD), AMEC, September 2003

Note: Map dot colors are representative of the highest historical concentration at each well and not the current concentration level. Historical data presented on this figure range from November 1996 through 2007.

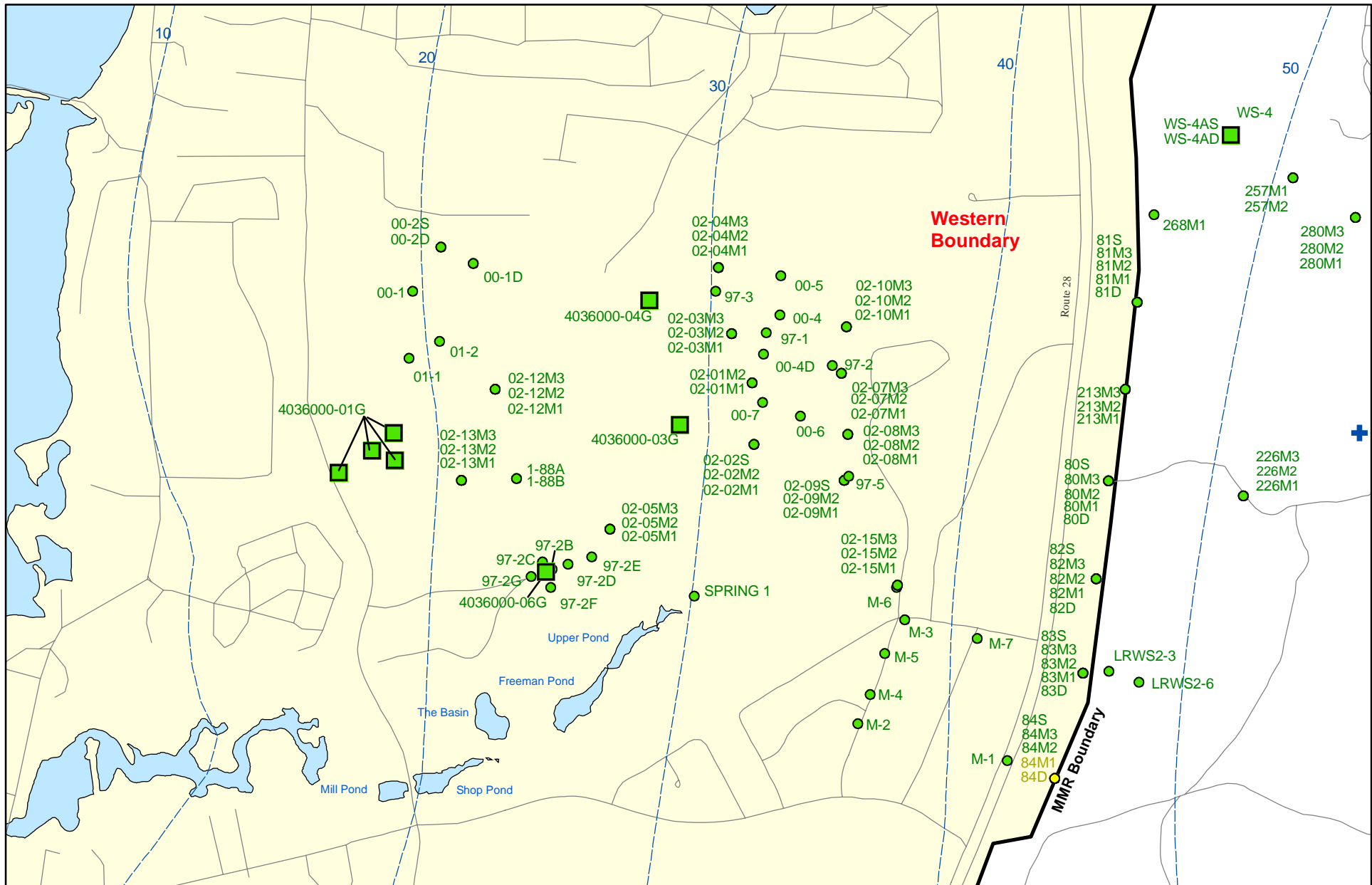
Impact Area Groundwater Study Program

AMEC Earth & Environmental, Inc.
Westford, Massachusetts

Sources & Notes
Base map data from US Geological Survey
7 1/2 minute Topographic Maps
Source: Office of Geographic and
Environmental Information (MassGIS)
Commonwealth of Massachusetts
Executive Office of Environmental Affairs

FIGURE 1

Inset Map



Sources & Notes:
 Base map data from US Geological Survey
 7 1/2 minute Topographic maps
 Source: Office of Geographic and
 Environmental Information (MassGIS)
 Commonwealth of Massachusetts
 Executive Office of Environmental Affairs

AMEC Earth & Environmental, Inc.
 Westford, Massachusetts

- Validated Detection Less than Maximum Contaminant Level/Health Advisories
- Validated Non-Detect
- + Current Gun Position
- Validated Non-Detect Water Supply Well
- Proposed Water Supply Well
- Water Table Contour (Feet NGVD)
AMEC, September 2003

Note: Map dot colors are representative of the highest historical concentration at each well and not the current concentration level.
 Historical data presented on this figure range from November 1996 through 2007.

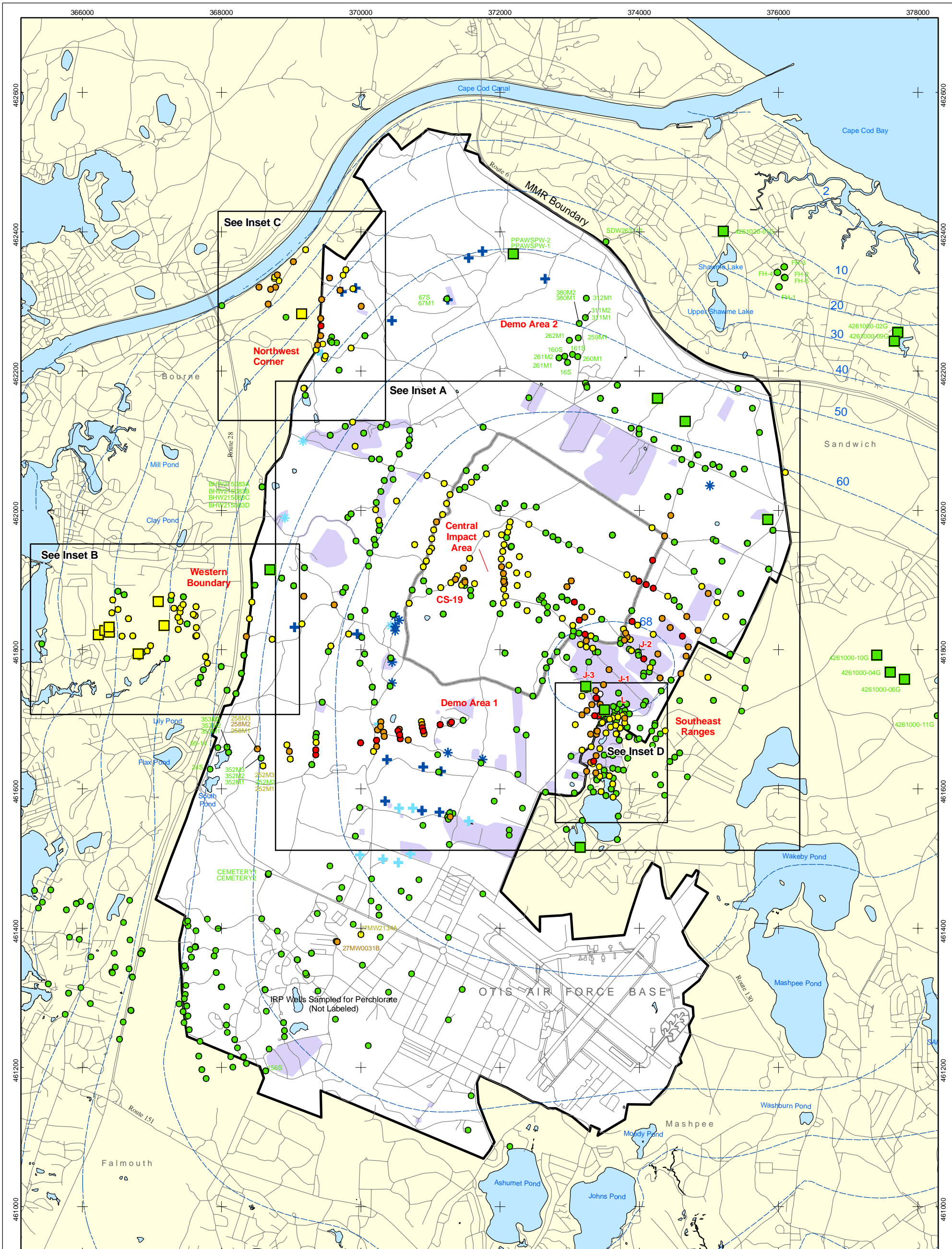
Explosives in Groundwater Compared to Maximum Contaminant Level/Health Advisories Validated Data as of 7/27/07



FIGURE

Inset Map B


1



- Validated Detection Greater than or Equal to 24 ppb
- Validated Detection Greater than or Equal to 2 and Less than 24 ppb
- Validated Detection Greater than Non-Detect and Less than 2 ppb
- Validated Non-Detect

- Data Pending
- Proposed Monitoring Well
- Current Gun Position
- Current Mortar Position
- Old Gun Position
- Old Mortar Position

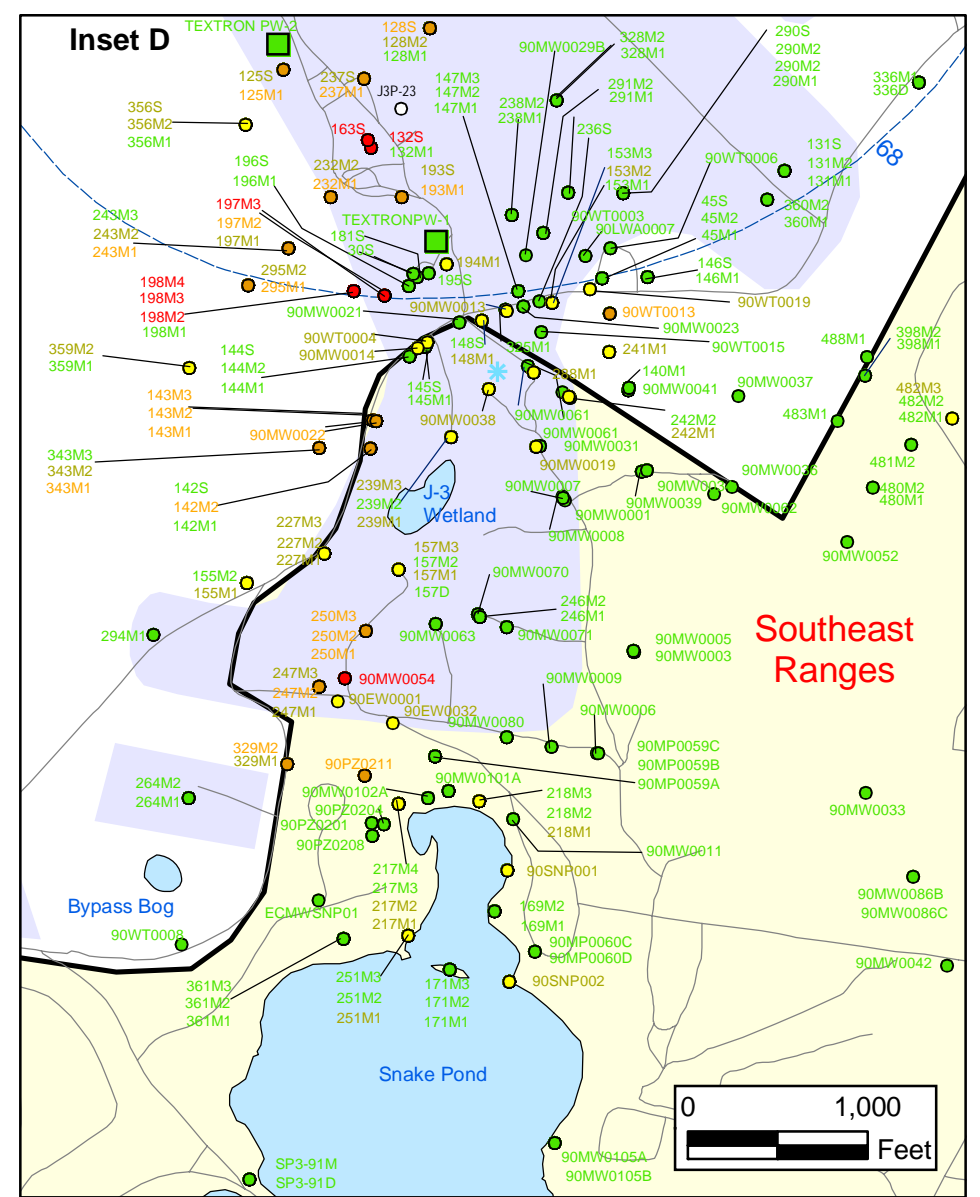
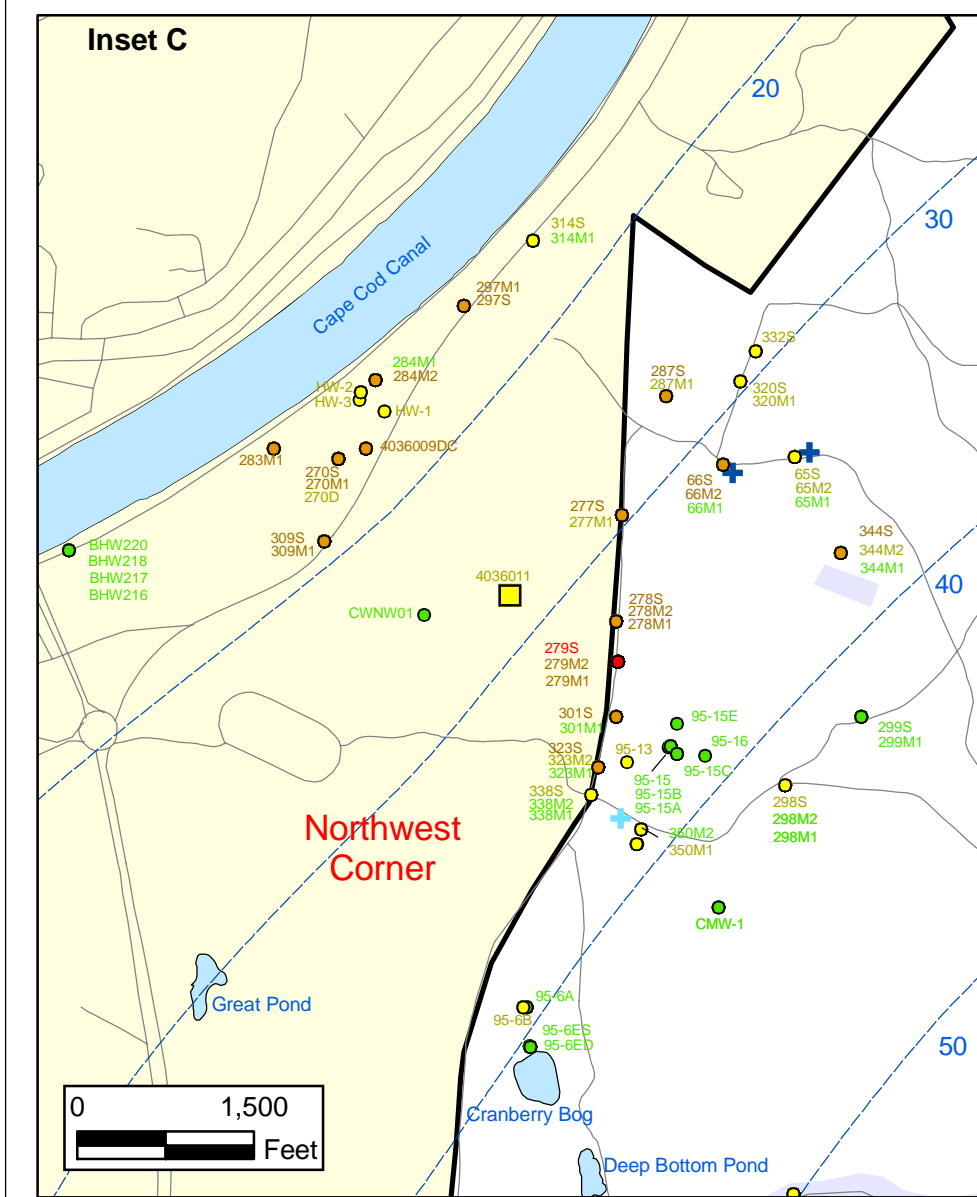
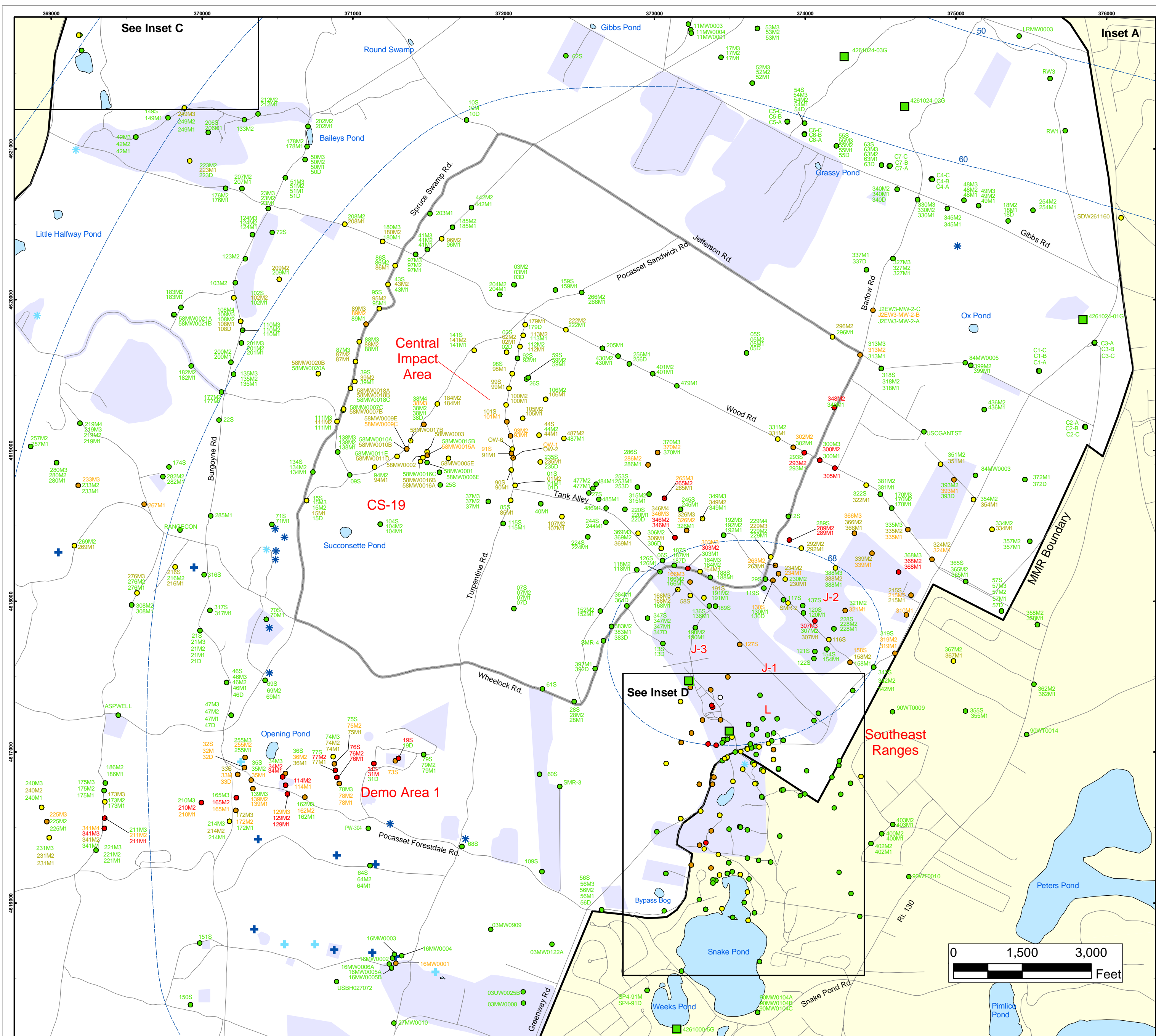
- Validated Non-Detect Water Supply Well
- Validated Detection Less than 2 ppb Water Supply Well
- Proposed Water Supply Well
- Water Table Contour (Feet NGVD) AMEC, September 2003
- Military Range Areas


 0 2,000 4,000
 Feet

Sources & Notes
 Base map data from US Geological Survey 7 1/2 minute Topographic Maps.
 Source: Office of Geographic and Environmental Information (MassGIS) Commonwealth of Massachusetts Executive Office of Environmental Affairs

Note: Map dot colors are representative of the highest historical concentration at each well and not the current concentration level. Historical data presented on this figure range from November 1996 through 2007.

**Perchlorate in Groundwater
Compared to a 2 ppb Concentration
Validated Data as of 7/27/07**



Perchlorate in Groundwater Compared to a 2 PPB Concentration Validated Data as of 7/27/07

- Validated Detection Greater than or Equal to 24 ppb
- Validated Detection Greater than or Equal to 2 and Less than 24 ppb
- Validated Detection Less than 2 ppb
- Validated Non-Detect
- Data Pending
- Proposed Monitoring Well
- Military Range Areas
- + Current Gun Position
- * Current Mortar Position
- + Old Gun Position
- * Old Mortar Position
- Validated Non-Detect Water Supply Well
- Validated Detection Less Than 2 ppb Water Supply Well
- Water Table Contour (Feet NGVD), AMEC, September 2003

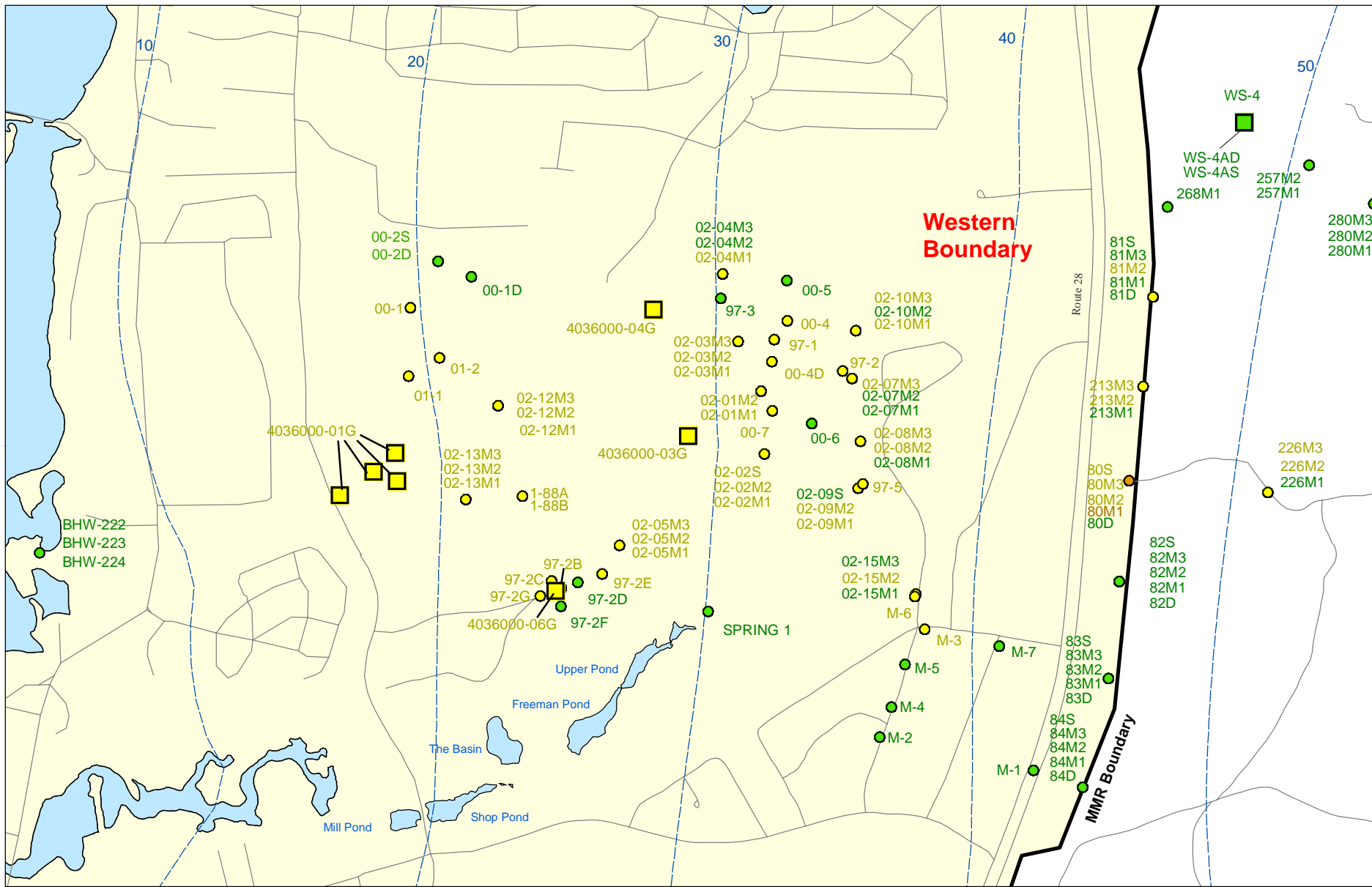
Note: Map dot colors are representative of the highest historical concentration at each well and not the current concentration level. Historical data presented on this figure range from November 1996 through 2007.

Impact Area
Groundwater Study Program

Sources & Notes
Base map data from US Geological Survey
7 1/2 minute Topographic Maps
Source: Office of Geographic and
Environmental Information (MassGIS)
Commonwealth of Massachusetts
Executive Office of Environmental Affairs

AMEC Earth & Environmental, Inc.
Westford, Massachusetts

FIGURE
Inset Map
8



Sources & Notes:
 Base map data from US Geological Survey
 7 1/2 minute Topographic maps.
 Source: Office of Geographic and
 Environmental Information (MassGIS)
 Commonwealth of Massachusetts
 Executive Office of Environmental Affairs

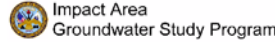
AMEC Earth & Environmental, Inc.
 Westford, Massachusetts

- Validated Detection Greater than or Equal to 2 and Less than 24 ppb
- Validated Detection Greater than Non-Detect and Less than 2 ppb
- Validated Non-Detect

Note: Map dot colors are representative of the highest historical concentration at each well and not the current concentration level.
 Historical data presented on this figure range from November 1996 through 2007.

- Validated Detection Less than 2 ppb Water Supply Well
- Validated Non-Detect Water Supply Well
- +
- Current Gun Position
- Water Table Contour (Feet NGVD)
 AMEC, September 2003

Perchlorate in Groundwater Compared to a 2 ppb Concentration Validated Data as of 7/27/07



Inset Map B 8

Activity ID	Activity Description	Orig Dur	Rem Dur	Anticipated /Actual Start	Anticipated /Actual Finish	FY07				FY08				FY09				FY10				FY11				FY12																																	
						J	F	M	A	M	J	J	A	S	O	N	D	J	F	M	A	M	J	J	A	S	O	N	D	J	F	M	A	M	J	J	A	S	O	N	D	J	F	M	A	M	J	J	A	S	O	N	D	J	F	M	A	M	J
Demo 1																																		General Notes: A. 55 day - Agency Review/Approve Activity Includes: 15 days: Agency Review/Comment 15 days: Prepare/Submit RCL 5 days: Agency Review RCL 5 days: Agency Conduct CRM 10 days: Prepare/Submit MOR 5 days: Agency Approve MOR B. FY07 Priorities 1. Demolition Area 1 GW 2. J-2 Range GW 3. J-1 Range GW 4. J-3 Range GW 5. Small Arms Ranges 6. Gun & Mortar 7. Demolition Area Soil 8. Western Boundary 9. Ammunition Supply Point																									
Demolition Area 1 Soil																																																											
00145	Agency Review/Approve Draft Demo 1 RRA Soil COWR	313*	52*	22DEC05A	21MAR07																																																						
DM0920	Prepare/Submit Final Demo 1 RRA Soil COWR	20	20	22MAR07	18APR07																																																						
DL0000	Prepare/Submit Draft Demo 1 Soil NFA DD	45	45	19APR07	21JUN07																																																						
DL0080	Agency Review/Approve Draft Demo 1 Soil NFA DD	55*	55*	22JUN07	10SEP07																																																						
DL0085	Formal Public Comment Demo 1 Soil NFA DD	30	30	09JUL07	07AUG07																																																						
DL0100	Prepare/Submit Final Demo 1 Soil NFA DD	20	20	11SEP07	09OCT07																																																						
DL0110	EPA Issue Demo 1 Soil NFA DD	15	15	10OCT07	30OCT07																																																						
Demolition Area 1 Groundwater																																																											
31575	Construct/Startup Demo 1 GW Treatment System	211*	102*	01AUG06A	31MAY07																																																						
CL0010	Prepare/Submit Draft Demo 1 SPM Plan	60	26	02JAN07A	12FEB07																																																						
CL0100	Agency Review/Approve Draft Demo 1 SPM Plan	55*	55*	13FEB07	01MAY07																																																						
CL0130	Prepare/Submit Final Demo 1 SPM Plan	20	20	02MAY07	30MAY07																																																						
CL0140	Prepare/Submit Dr Demo 1 GW Int RA & Close-Out Rt	60	60	05APR07	28JUN07																																																						
CL0220	Agency Revw/Approv Dr Demo 1 GW Int RA & Close-Out	55*	55*	29JUN07	17SEP07																																																						
CL0240	Prep/Sub Final Demo 1 GW Interim RA&Close-Out Rt	20	20	18SEP07	16OCT07																																																						
CL0245	EPA Approve Demo 1 GW Interim RA & Close-Out Rt	15	15	17OCT07	06NOV07																																																						
J-1 Range																																																											
J-1 Range Soil & Groundwater																																																											
02185	Prepare/Submit Draft J-1 GW RRA Pln Project Note	66*	0*	02OCT06A	05JAN07A																																																						
02189	Agency Review/Approve Draft J-1 GW RRA Pjct Note	31*	31*	08JAN07A	20FEB07																																																						
02192	Informal Public Comment J-1 GW RRA Project Note	15	15	20JAN07	03FEB07																																																						
0920	Prepare/Submit Final J-1 GW RRA Pln Project Note	10	10	21FEB07	06MAR07																																																						
02187	Design J-1 GW RRA Treatment System	120*	121*	09JAN07A	27JUN07																																																						
02191	Construct/Startup J-1 GW RRA Treatment System	66	66	17SEP07	20DEC07																																																						
CL0250	Prepare/Submit Draft J-1 RRA GW SPM Plan	45	45	25APR07	27JUN07																																																						
CL0330	Agency Review/Approve Draft J-1 RRA GW SPM Plan	55*	55*	28JUN07	14SEP07																																																						

Start Date 01JAN06
 Finish Date 20DEC69
 Data Date 07JAN07
 Run Date 18JAN07 17:08

U197
 Sheet 1 of 14
 RCS - Revised Format
 as of 07JAN07

Activity Colors

- IAGWSP Activities
- Agency Activities
- Formal/Informal Public Comment Activities

Activity ID	Activity Description	Orig Dur	Rem Dur	Anticipated /Actual Start	Anticipated /Actual Finish	FY07												FY08												FY09												FY10												FY11												FY12																							
						J	F	M	A	M	J	J	A	S	O	N	D	J	F	M	A	M	J	J	A	S	O	N	D	J	F	M	A	M	J	J	A	S	O	N	D	J	F	M	A	M	J	J	A	S	O	N	D	J	F	M	A	M	J	J	A	S	O	N	D	J	F	M	A	M	J	J	A	S	O	N	D	J	F	M	A	M	J	J	A	S	O	N	D
						[Gantt Chart Area]												[Gantt Chart Area]												[Gantt Chart Area]												[Gantt Chart Area]												[Gantt Chart Area]												[Gantt Chart Area]																							
SL0100	Agency Review/Approve Draft J-1 North RSP	55*	55*	03JAN08	20MAR08	[Gantt Chart Area]												[Gantt Chart Area]												[Gantt Chart Area]												[Gantt Chart Area]												[Gantt Chart Area]												[Gantt Chart Area]																							
SL0110	Prepare/Submit Final J-1 North RSP	10	10	21MAR08	03APR08	[Gantt Chart Area]												[Gantt Chart Area]												[Gantt Chart Area]												[Gantt Chart Area]												[Gantt Chart Area]												[Gantt Chart Area]																							
SL0120	Formal Public Comment J-1 North RSP	30	30	04APR08	03MAY08	[Gantt Chart Area]												[Gantt Chart Area]												[Gantt Chart Area]												[Gantt Chart Area]												[Gantt Chart Area]												[Gantt Chart Area]																							
SL0130	Prepare/Submit Draft J-1 North GW DD	20	20	05MAY08	02JUN08	[Gantt Chart Area]												[Gantt Chart Area]												[Gantt Chart Area]												[Gantt Chart Area]												[Gantt Chart Area]												[Gantt Chart Area]																							
SL0140	Agency Review/Approve Draft J-1 North DD	55*	55*	03JUN08	19AUG08	[Gantt Chart Area]												[Gantt Chart Area]												[Gantt Chart Area]												[Gantt Chart Area]												[Gantt Chart Area]												[Gantt Chart Area]																							
SL0150	Prepare/Submit Final J-1 North DD	20	20	20AUG08	17SEP08	[Gantt Chart Area]												[Gantt Chart Area]												[Gantt Chart Area]												[Gantt Chart Area]												[Gantt Chart Area]												[Gantt Chart Area]																							
SL0160	EPA Issue J-1 North DD	15	15	18SEP08	08OCT08	[Gantt Chart Area]												[Gantt Chart Area]												[Gantt Chart Area]												[Gantt Chart Area]												[Gantt Chart Area]												[Gantt Chart Area]																							
02174	Design J-1 North GW Treatment System	160	160	13SEP07	01MAY08	[Gantt Chart Area]												[Gantt Chart Area]												[Gantt Chart Area]												[Gantt Chart Area]												[Gantt Chart Area]												[Gantt Chart Area]																							
02184	Construct/Startup J-1 North GW Treatment System	243	243	20AUG08	06AUG09	[Gantt Chart Area]												[Gantt Chart Area]												[Gantt Chart Area]												[Gantt Chart Area]												[Gantt Chart Area]												[Gantt Chart Area]																							
SL0170	Prepare/Submit Draft J-1 North SPM Plan	60	60	24JAN08	17APR08	[Gantt Chart Area]												[Gantt Chart Area]												[Gantt Chart Area]												[Gantt Chart Area]												[Gantt Chart Area]												[Gantt Chart Area]																							
SL0180	Agency Review/Approve Draft J-1 North SPM Plan	55*	55*	18APR08	07JUL08	[Gantt Chart Area]												[Gantt Chart Area]												[Gantt Chart Area]												[Gantt Chart Area]												[Gantt Chart Area]												[Gantt Chart Area]																							
SL0190	Prepare/Submit Final J-1 North SPM Plan	20	20	08JUL08	04AUG08	[Gantt Chart Area]												[Gantt Chart Area]												[Gantt Chart Area]												[Gantt Chart Area]												[Gantt Chart Area]												[Gantt Chart Area]																							
SL0200	Prep/Sub Draft J-1 North RA & Close-Out Rpts	60	60	11JUN09	03SEP09	[Gantt Chart Area]												[Gantt Chart Area]												[Gantt Chart Area]												[Gantt Chart Area]												[Gantt Chart Area]												[Gantt Chart Area]																							
SL0210	Agency Revw/Appr Draft J-1 North RA & Close-Out	55*	55*	04SEP09	24NOV09	[Gantt Chart Area]												[Gantt Chart Area]												[Gantt Chart Area]												[Gantt Chart Area]												[Gantt Chart Area]												[Gantt Chart Area]																							
SL0220	Prepare/Submit J-1 North RA & Close-Out Rpts	20	20	25NOV09	23DEC09	[Gantt Chart Area]												[Gantt Chart Area]												[Gantt Chart Area]												[Gantt Chart Area]												[Gantt Chart Area]												[Gantt Chart Area]																							
SL0230	EPA Approve J-1 North RA & Close-Out Rpts	15	15	24DEC09	15JAN10	[Gantt Chart Area]												[Gantt Chart Area]												[Gantt Chart Area]												[Gantt Chart Area]												[Gantt Chart Area]												[Gantt Chart Area]																							
J-2 Range																																																																																									
J-2 Range Soil																																																																																									
03216	Prepare/Submit Draft J-2 Soil RRA COWR Addendum	45	18	13NOV06A	31JAN07	[Gantt Chart Area]												[Gantt Chart Area]												[Gantt Chart Area]												[Gantt Chart Area]												[Gantt Chart Area]												[Gantt Chart Area]																							
03217	Review/Approve J-2 Soil RRA COWR Addendum	55*	55*	01FEB07	19APR07	[Gantt Chart Area]												[Gantt Chart Area]												[Gantt Chart Area]												[Gantt Chart Area]												[Gantt Chart Area]												[Gantt Chart Area]																							
CIA2798	Prepare/Submit Final J-2 Soil RRA COWR	20	20	20APR07	17MAY07	[Gantt Chart Area]												[Gantt Chart Area]												[Gantt Chart Area]												[Gantt Chart Area]												[Gantt Chart Area]												[Gantt Chart Area]																							
PW1614	Conduct J-2 Supplemental Soil Investigation	60*	42*	11DEC06A	07MAR07	[Gantt Chart Area]												[Gantt Chart Area]												[Gantt Chart Area]												[Gantt Chart Area]												[Gantt Chart Area]												[Gantt Chart Area]																							
00325	Prepare/Submit Draft J-2 Soil Investigation Rpt	143	143	08MAR07	27SEP07	[Gantt Chart Area]												[Gantt Chart Area]												[Gantt Chart Area]												[Gantt Chart Area]												[Gantt Chart Area]												[Gantt Chart Area]																							
00329	Agency Review/Approve Draft J-2 Soil Invest Rpt	55*	55*	28SEP07	18DEC07	[Gantt Chart Area]												[Gantt Chart Area]												[Gantt Chart Area]												[Gantt Chart Area]												[Gantt Chart Area]												[Gantt Chart Area]																							
J20038	Prepare/Submit Final J-2 Soil Investigation Rpt	20	20	19DEC07	17JAN08	[Gantt Chart Area]												[Gantt Chart Area]												[Gantt Chart Area]												[Gantt Chart Area]												[Gantt Chart Area]												[Gantt Chart Area]																							
SL0300	Prepare/Submit Draft J-2 Soil NFA DD	45	45	18JAN08	21MAR08	[Gantt Chart Area]												[Gantt Chart Area]												[Gantt Chart Area]												[Gantt Chart Area]												[Gantt Chart Area]												[Gantt Chart Area]																							
SL0310	Agency Review/Approve Draft J-2 Soil NFA DD	55*	55*	24MAR08	09JUN08	[Gantt Chart Area]												[Gantt Chart Area]												[Gantt Chart Area]												[Gantt Chart Area]												[Gantt Chart Area]												[Gantt Chart Area]																							
SL0320	Formal Public Comment J-2 Soil NFA DD	30	30	05APR08	04MAY08	[Gantt Chart Area]												[Gantt Chart Area]												[Gantt Chart Area]												[Gantt Chart Area]												[Gantt Chart Area]												[Gantt Chart Area]																							
SL0330	Prepare/Submit Final J-2 Soil NFA DD	20	20	10JUN08	08JUL08	[Gantt Chart Area]												[Gantt Chart Area]												[Gantt Chart Area]												[Gantt Chart Area]												[Gantt Chart Area]												[Gantt Chart Area]																							
SL0340	EPA Issue J-2 Soil NFA DD	15	15	09JUL08	29JUL08	[Gantt Chart Area]												[Gantt Chart Area]												[Gantt Chart Area]												[Gantt Chart Area]												[Gantt Chart Area]												[Gantt Chart Area]																							

Activity ID	Activity Description	Orig Dur	Rem Dur	Anticipated /Actual Start	Anticipated /Actual Finish	FY07												FY08												FY09												FY10												FY11												FY12																																			
						J	F	M	A	M	J	J	A	S	O	N	D	J	F	M	A	M	J	J	A	S	O	N	D	J	F	M	A	M	J	J	A	S	O	N	D	J	F	M	A	M	J	J	A	S	O	N	D	J	F	M	A	M	J	J	A	S	O	N	D	J	F	M	A	M	J	J	A	S	O	N	D																								
						J F M A M J J A S O N D												J F M A M J J A S O N D												J F M A M J J A S O N D												J F M A M J J A S O N D												J F M A M J J A S O N D																																															
22130	Agency Review/Approve CIA Dft Soil/GW FS Scm Rpt	55	55	16APR07	02JUL07	[Gantt bar: Apr 16 - Jul 2]												Agency Review/Approve CIA Dft Soil/GW FS Scm Rpt																																																																																			
22131	Prepare/Submit Final CIA Dft Soil/GW FS Scm Rpt	20	20	03JUL07	31JUL07	[Gantt bar: Jul 3 - Jul 31]												Prepare/Submit Final CIA Dft Soil/GW FS Scm Rpt																																																																																			
22210	Prepare/Submit Draft CIA Soil/GW FS	135	135	02AUG07	14FEB08	[Gantt bar: Aug 2 - Feb 14]												Prepare/Submit Draft CIA Soil/GW FS																																																																																			
22230	Agency Review/Approve CIA Soil/GW FS	85	85	15FEB08	16JUN08	[Gantt bar: Feb 15 - Jun 16]												Agency Review/Approve CIA Soil/GW FS																																																																																			
22231	Prepare/Submit Final CIA Soil/GW FS	20	20	17JUN08	15JUL08	[Gantt bar: Jun 17 - Jul 15]												Prepare/Submit Final CIA Soil/GW FS																																																																																			
32510	Prepare/Submit Draft CIA RSP	60	60	19FEB08	12MAY08	[Gantt bar: Feb 19 - May 12]												Prepare/Submit Draft CIA RSP																																																																																			
32520	Agency Review/Approve Draft CIA RSP	75	75	13MAY08	27AUG08	[Gantt bar: May 13 - Aug 27]												Agency Review/Approve Draft CIA RSP																																																																																			
32530	Prepare/Submit Final CIA RSP	20	20	28AUG08	25SEP08	[Gantt bar: Aug 28 - Sep 25]												Prepare/Submit Final CIA RSP																																																																																			
32540	Formal Public Comment CIA RSP	30	30	26SEP08	26OCT08	[Gantt bar: Sep 26 - Oct 26]												Formal Public Comment CIA RSP																																																																																			
CI0080	Prepare/Submit Draft CIA DD	20	20	27OCT08	24NOV08	[Gantt bar: Oct 27 - Nov 24]												Prepare/Submit Draft CIA DD																																																																																			
CI0090	Agency Review/Approve Draft CIA DD	20	20	25NOV08	23DEC08	[Gantt bar: Nov 25 - Dec 23]												Agency Review/Approve Draft CIA DD																																																																																			
CI0100	Prepare/Submit Final CIA DD	20	20	24DEC08	22JAN09	[Gantt bar: Dec 24 - Jan 22]												Prepare/Submit Final CIA DD																																																																																			
CI0110	EPA Issue CIA DD	15	15	23JAN09	12FEB09	[Gantt bar: Jan 23 - Feb 12]												EPA Issue CIA DD																																																																																			
32579	Design CIA Remedy	230	230	16JUL08	12JUN09	[Gantt bar: Jul 16 - Jun 12]												Design CIA Remedy																																																																																			
32580	Construct CIA Remedy	427	427	17SEP09	27MAY11	[Gantt bar: Sep 17 - May 27]												Construct CIA Remedy												Assumes 66 days procurement																																																																							
CI0120	Prepare/Submit Draft CIA SPM Plan	60	60	20MAR09	12JUN09	[Gantt bar: Mar 20 - Jun 12]												Prepare/Submit Draft CIA SPM Plan																																																																																			
CI0130	Agency Review/Approve Draft CIA SPM Plan	55	55	15JUN09	31AUG09	[Gantt bar: Jun 15 - Aug 31]												Agency Review/Approve Draft CIA SPM Plan																																																																																			
CI0140	Prepare/Submit Final CIA SPM Plan	20	20	01SEP09	29SEP09	[Gantt bar: Sep 1 - Sep 29]												Prepare/Submit Final CIA SPM Plan																																																																																			
CI0150	Prep/Sub Draft CIA Interim RA & Close-Out Rpt	60	60	04APR11	27JUN11	[Gantt bar: Apr 4 - Jun 27]												Prep/Sub Draft CIA Interim RA & Close-Out Rpt																																																																																			
CI0160	Agency Revw/Appro Draft CIA Interim RA & Close-Out	55	55	28JUN11	14SEP11	[Gantt bar: Jun 28 - Sep 14]												Agency Revw/Appro Draft CIA Interim RA & Close-Out																																																																																			
CI0170	Prepare/Submit CIA Interim RA & Close-Out Rpt	20	20	15SEP11	13OCT11	[Gantt bar: Sep 15 - Oct 13]												Prepare/Submit CIA Interim RA & Close-Out Rpt																																																																																			
CI0180	EPA Approve CIA Interim RA & Close-Out Rpt	15	15	14OCT11	03NOV11	[Gantt bar: Oct 14 - Nov 3]												EPA Approve CIA Interim RA & Close-Out Rpt																																																																																			
Northwest Corner																																																																																																					
Northwest Corner Soil & Groundwater																																																																																																					
03451	Prepare/Submit Draft Northwest Corner RI/FS	135	134	09NOV06A	19SEP07	[Gantt bar: Nov 9 - Sep 19]												Prepare/Submit Draft Northwest Corner RI/FS																																																																																			
03453	Agency Review/Approve Draft Northwest Corner RI/FS	55*	55*	20SEP07	10DEC07	[Gantt bar: Sep 20 - Dec 10]												Agency Review/Approve Draft Northwest Corner RI/FS																																																																																			
03454	Prepare/Submit Final Northwest Corner RI/FS	20	20	11DEC07	09JAN08	[Gantt bar: Dec 11 - Jan 9]												Prepare/Submit Final Northwest Corner RI/FS																																																																																			
SL0600	Prepare/Submit Draft Northwest Corner RSP	15	15	10JAN08	30JAN08	[Gantt bar: Jan 10 - Jan 30]												Prepare/Submit Draft Northwest Corner RSP																																																																																			
SL0610	Agency Review/Approve Draft Northwest Corner RSP	55*	55*	31JAN08	17APR08	[Gantt bar: Jan 31 - Apr 17]												Agency Review/Approve Draft Northwest Corner RSP																																																																																			
SL0620	Prepare/Submit Final Northwest Corner RSP	10	10	18APR08	01MAY08	[Gantt bar: Apr 18 - May 1]												Prepare/Submit Final Northwest Corner RSP																																																																																			

Activity ID	Activity Description	Orig Dur	Rem Dur	Anticipated /Actual Start	Anticipated /Actual Finish	FY07				FY08				FY09				FY10				FY11				FY12																																	
						J	F	M	A	M	J	J	A	S	O	N	D	J	F	M	A	M	J	J	A	S	O	N	D	J	F	M	A	M	J	J	A	S	O	N	D	J	F	M	A	M	J	J	A	S	O	N	D	J	F	M	A	M	J
CL1860	Prepare/Submit Final G&M Soil RRA Plan	20	20	31AUG07	28SEP07																																																						
00571	Conduct G&M Soil RRA	132	132	17SEP07	26MAR08																																																						
CL1900	Prepare/Submit Draft G&M Soil COWR	60	60	27MAR08	19JUN08																																																						
CL1990	Agency Review/Approve Draft G&M Soil COWR	55*	55*	20JUN08	08SEP08																																																						
CL2000	Prepare/Submit G&M Final Soil COWR	20	20	09SEP08	06OCT08																																																						
00555	Prepare/Submit Draft G&M Soil/GW Investigat Rpt	242	242	13JUN07	28MAY08																																																						
00557	Agency Review/Approve Draft G&M Soil/GW Investig	55*	55*	29MAY08	14AUG08																																																						
00560	Prepare Final G&M Soil/GW Investigation Report	20	20	15AUG08	12SEP08																																																						
CL2230	Prepare/Submit Draft G&M DD	20	20	15SEP08	10OCT08																																																						
CL2280	Agency Review/Approve Draft G&M DD	55*	55*	14OCT08	02JAN09																																																						
CL2300	Formal Public Comment G&M DD	30	30	28OCT08	28NOV08																																																						
CL2310	Prepare/Submit Final G&M DD	20	20	05JAN09	30JAN09																																																						
CL2320	EPA Issue G&M DD	15	15	02FEB09	23FEB09																																																						
CL2325	Prepare/Submit Draft G&M LTM Plan	45	45	24FEB09	27APR09																																																						
CL2335	Agency Review/Approve Draft G&M LTM Plan	60*	60*	28APR09	22JUL09																																																						
CL2345	Prepare/Submit Final G&M LTM Plan	20	20	23JUL09	19AUG09																																																						
CL2355	Prepare/Submit Draft G&M Interim RA & Close-Out	60	60	24JUN09	17SEP09																																																						
CL2365	Agency Review/Approve Draft G&M Interim RA & Close-Out	55	55	18SEP09	08DEC09																																																						
CL2375	Prep/Sub Final G&M Interim RA & Close-Out Rpt	20	20	16DEC09	14JAN10																																																						
CL2385	EPA Approve G&M Interim RA & Close-Out Rpt	15	15	15JAN10	04FEB10																																																						
Former A Range																																																											
Former A Range Soil & Groundwater																																																											
01586	Prepare/Submit Draft Former A RI/FS	429*	219*	09MAR06A	16NOV07																																																						
01588	Agency Review/Approve Former A RI/FS	55	55	19NOV07	06FEB08																																																						
01562	Prepare/Submit Final Former A RI/FS	20	20	07FEB08	06MAR08																																																						
FA0400	Prepare/Submit Draft Former A RSP	15	15	07MAR08	27MAR08																																																						
FA0410	Agency Review/Approve Draft Former A RSP	55	55	28MAR08	13JUN08																																																						
FA0420	Prepare/Submit Final Former A RSP	10	10	16JUN08	27JUN08																																																						
FA0430	Formal Public Comment Former A RSP	30	30	28JUN08	28JUL08																																																						
FA0500	Prepare/Submit Draft Former A DD	20	20	29JUL08	25AUG08																																																						

Activity ID	Activity Description	Orig Dur	Rem Dur	Anticipated /Actual Start	Anticipated /Actual Finish	FY07												FY08												FY09												FY10												FY11												FY12																																															
						J	F	M	A	M	J	J	A	S	O	N	D	J	F	M	A	M	J	J	A	S	O	N	D	J	F	M	A	M	J	J	A	S	O	N	D	J	F	M	A	M	J	J	A	S	O	N	D	J	F	M	A	M	J	J	A	S	O	N	D	J	F	M	A	M	J	J	A	S	O	N	D	J	F	M	A	M	J	J	A	S																											
WA0006	Agency Review/Approve Draft WASA Soil/GW Investg	55	55	08MAY08	25JUL08																																																																																																												
WA0008	Prepare Final WASA Soil/GW Investigation Report	20	20	28JUL08	22AUG08																																																																																																												
WA0000	Prepare/Submit Draft WASA Soil RRA Plan	60	60	25AUG08	19NOV08																																																																																																												
WA0010	Agency Review/Approve Draft WASA Soil RRA Plan	55	55	21NOV08	09FEB09																																																																																																												
WA0020	Informal Public Comment WASA Soil RRA Plan	15	15	12DEC08	27DEC08																																																																																																												
WA0030	Prepare/Submit Final WASA Soil RRA Plan	20	20	10FEB09	10MAR09																																																																																																												
WA0040	Conduct WASA Soil RRA	30	30	11MAR09	21APR09																																																																																																												
WA0050	Prepare/Submit Draft WASA Soil COWR	60	60	22APR09	16JUL09																																																																																																												
WA0060	Agency Review/Approve Draft WASA Soil COWR	55	55	17JUL09	02OCT09																																																																																																												
WA0070	Prepare/Submit WASA Final Soil COWR	20	20	05OCT09	02NOV09																																																																																																												
WA0080	Prepare/Submit Draft WASA NFA DD	45	45	03NOV09	08JAN10																																																																																																												
WA0090	Agency Review/Approve Draft WASA NFA DD	55	55	11JAN10	29MAR10																																																																																																												
WA0100	Formal Public Comment WASA NFA DD	22	22	25JAN10	24FEB10																																																																																																												
WA0110	Prepare/Submit Final WASA NFA DD	20	20	30MAR10	26APR10																																																																																																												
WA0120	EPA Issue WASA NFA DD	15	15	27APR10	17MAY10																																																																																																												