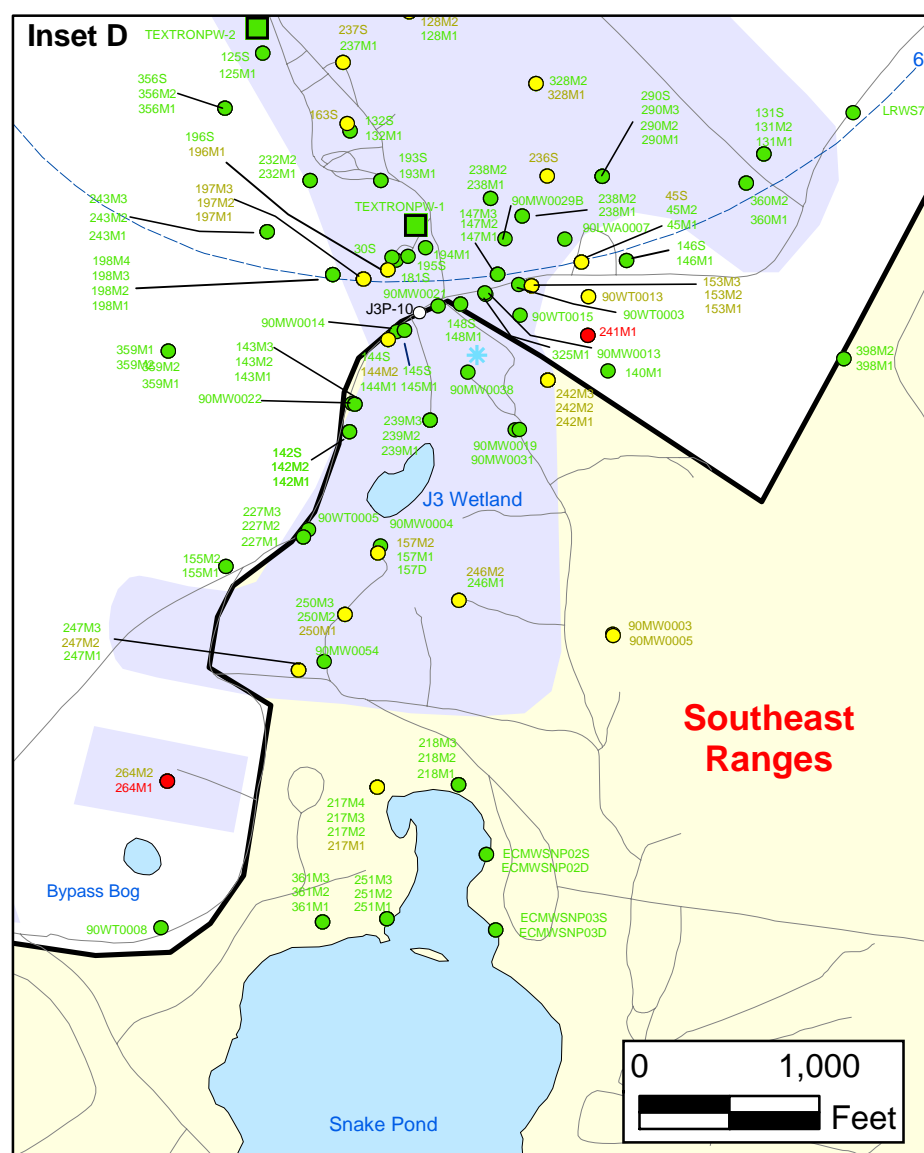
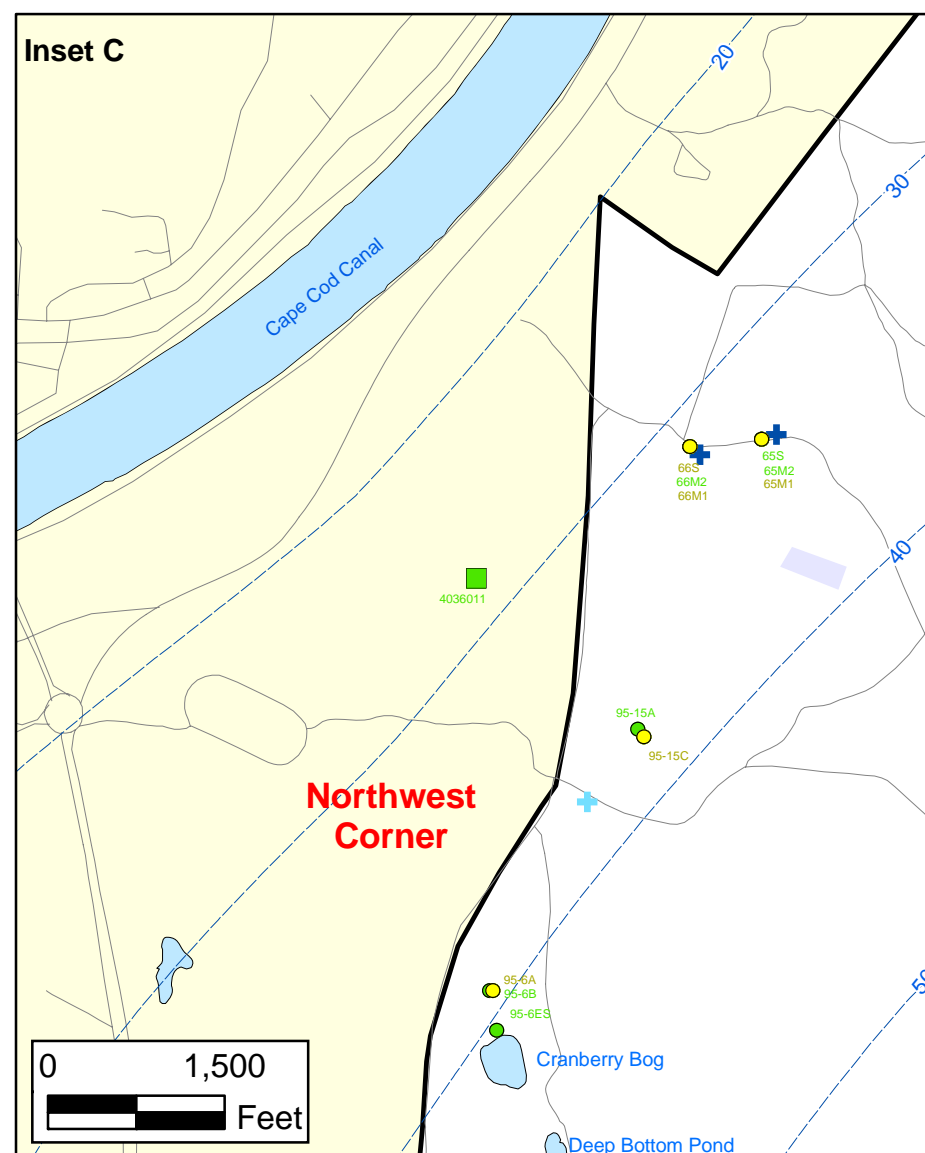
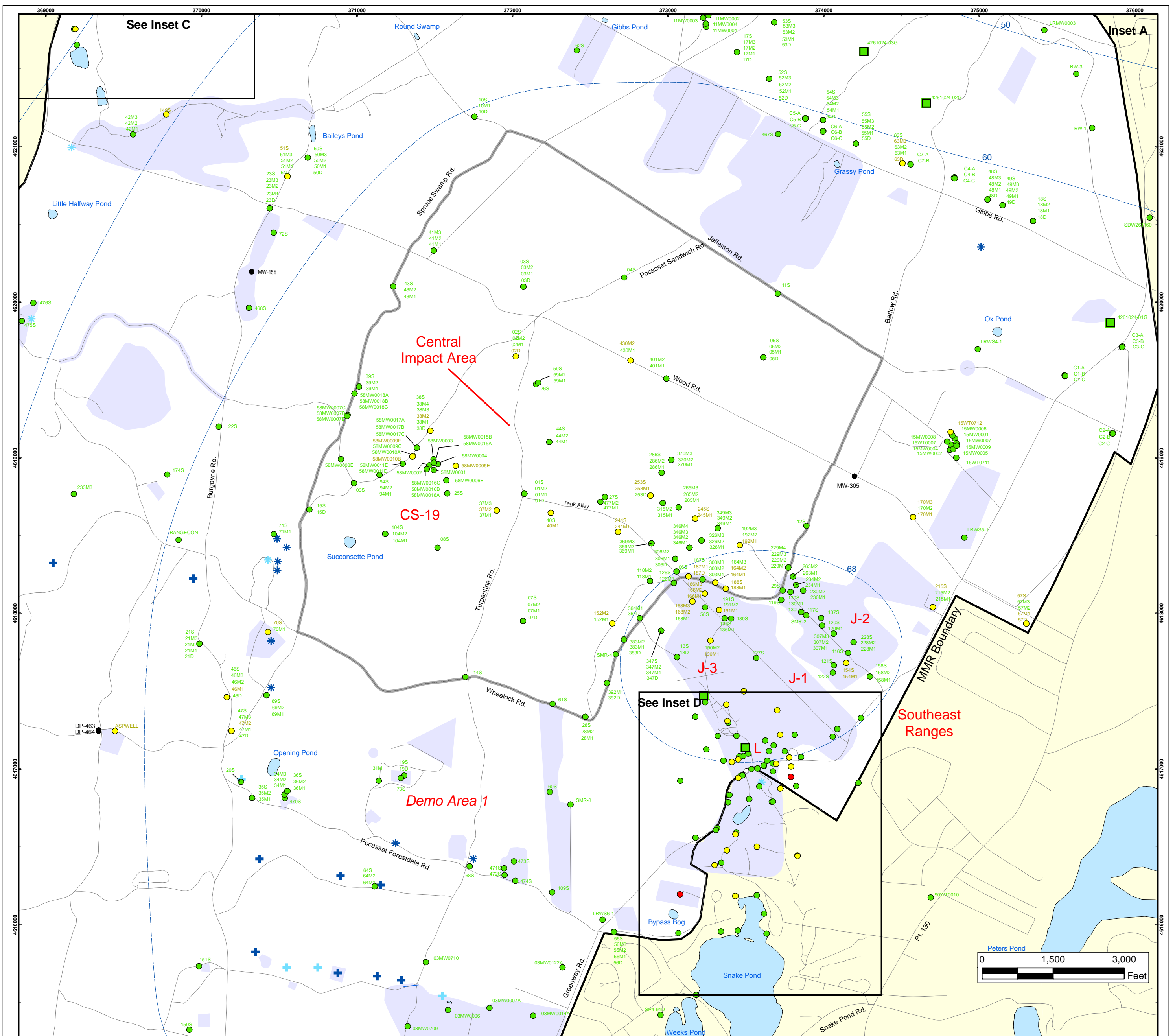


**Semi-Volatile Organic Compounds (Excluding BEHP) in Groundwater
 Compared to Maximum Contaminant Level/Health Advisories
 Validated Data as of 3/30/07**

AMEC Earth & Environmental, Inc.
 Westford, Massachusetts

FIGURE
5



Semi-Volatile Organic Compounds (Excluding BEHP) in Groundwater Compared to Maximum Contaminant Level/Health Advisories Validated Data as of 3/30/07

- Validated Detection Greater than or Equal to Maximum Contaminant Level/Health Advisories
- Validated Detection Less than Maximum Contaminant Level/Health Advisories
- Validated Non-Detect
- Data Pending
- Proposed Monitoring Well
- Military Range Areas
- ✚ Current Gun Position
- ✚ Current Mortar Position
- ✚ Old Gun Position
- ✚ Old Mortar Position
- Validated Non-Detect Water Supply Well
- Water Table Contour (Feet NGVD), AMEC, September 2003

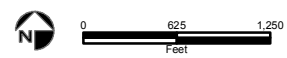
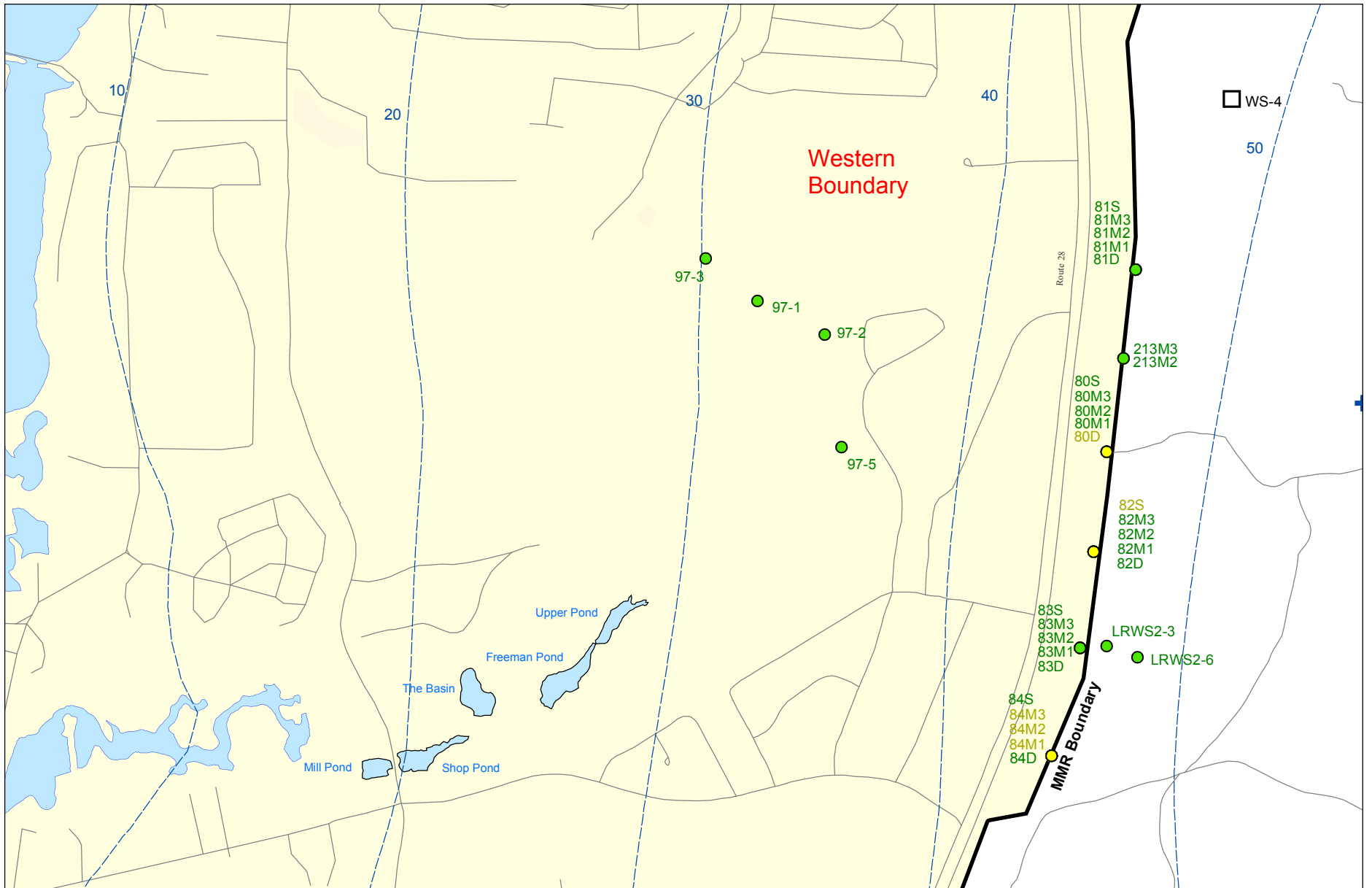
Note: Map dot colors are representative of the highest historical concentration at each well and not the current concentration level. Historical data presented on this figure range from November 1996 through 2006.

Impact Area Groundwater Study Program

AMEC Earth & Environmental, Inc.
Westford, Massachusetts

Sources & Notes
Base map data from US Geological Survey
7 1/2 minute Topographic Maps
Source: Office of Geographic and
Environmental Information (MissGIS)
Commonwealth of Massachusetts
Executive Office of Environmental Affairs

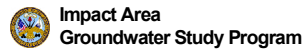
FIGURE 5
Inset Map



Sources & Notes:
 Base map data from US Geological Survey
 7 1/2 minute Topographic maps.
 Source: Office of Geographic and
 Environmental Information (MassGIS)
 Commonwealth of Massachusetts
 Executive Office of Environmental Affairs

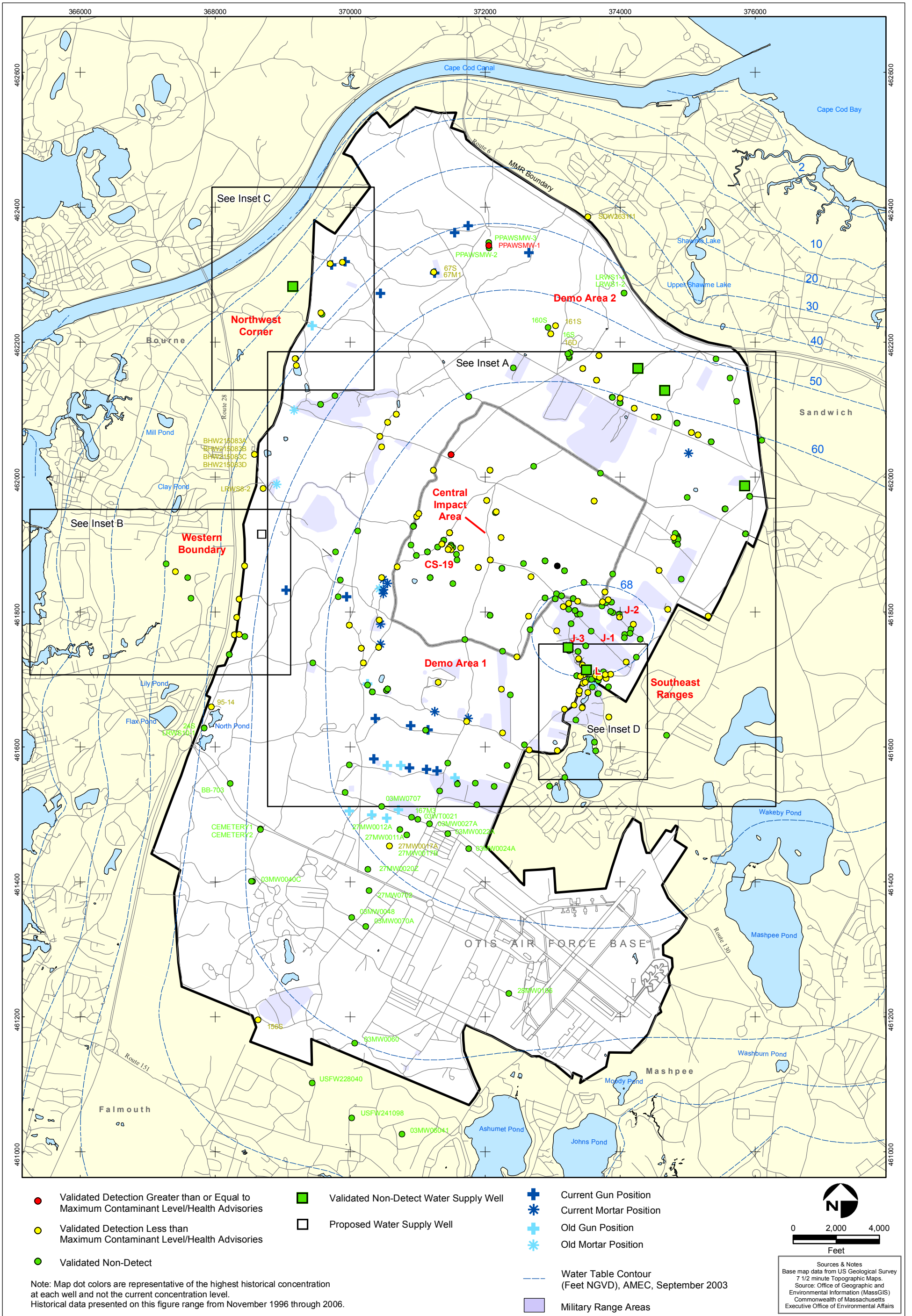
- Validated Detection Less than Maximum Contaminant Level/Health Advisories
- Validated Non-Detect
- Proposed Water Supply Well
- + Current Gun Position
- Water Table Contour (Feet NGVD), AMEC, September 2003

Semi-Volatile Organic Compounds (Excluding BEHP) in Groundwater Compared to Maximum Contaminant Level/Health Advisories
 Validated Data as of 3/30/07



Note: Map dot colors are representative of the highest historical concentration at each well and not the current concentration level. Historical data presented on this figure range from November 1996 through 2006.

Inset Map B 5 **FIGURE**

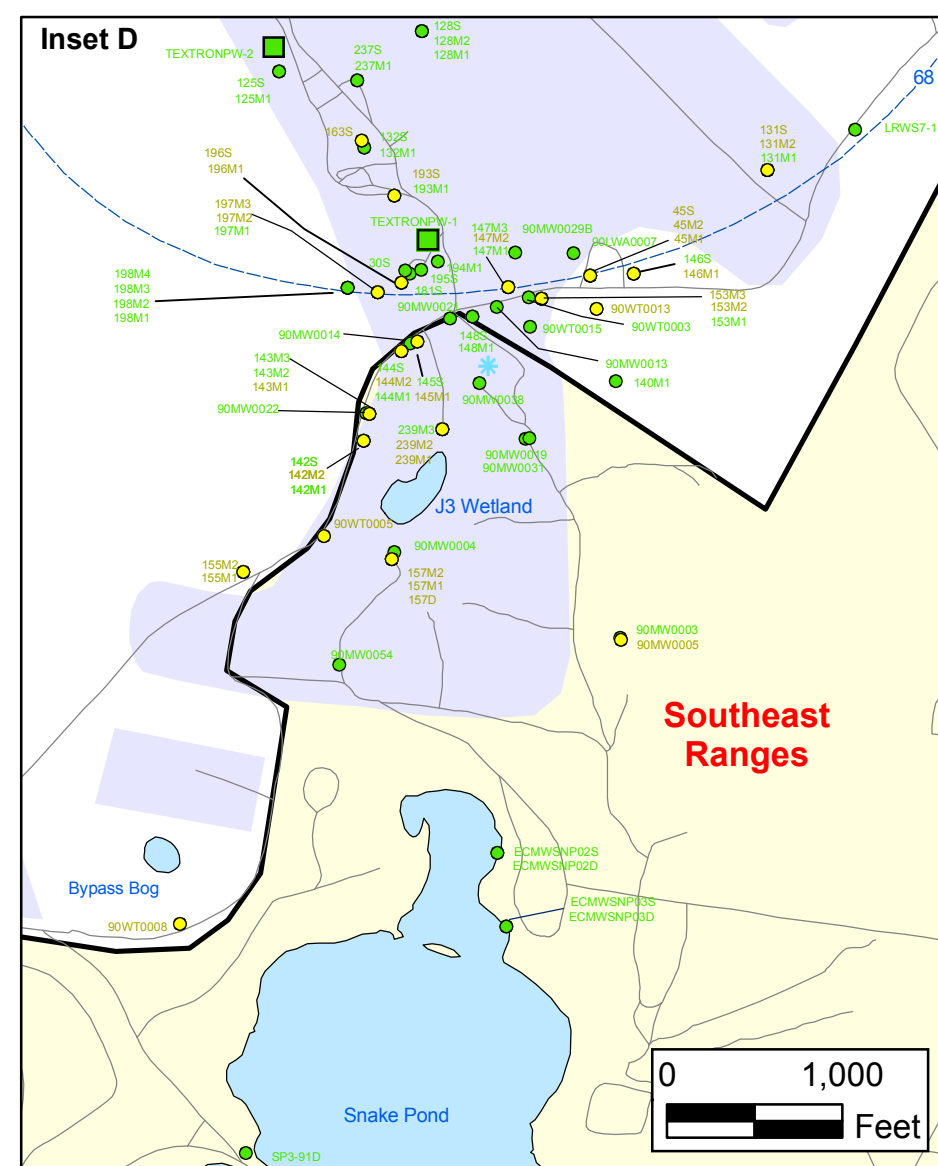
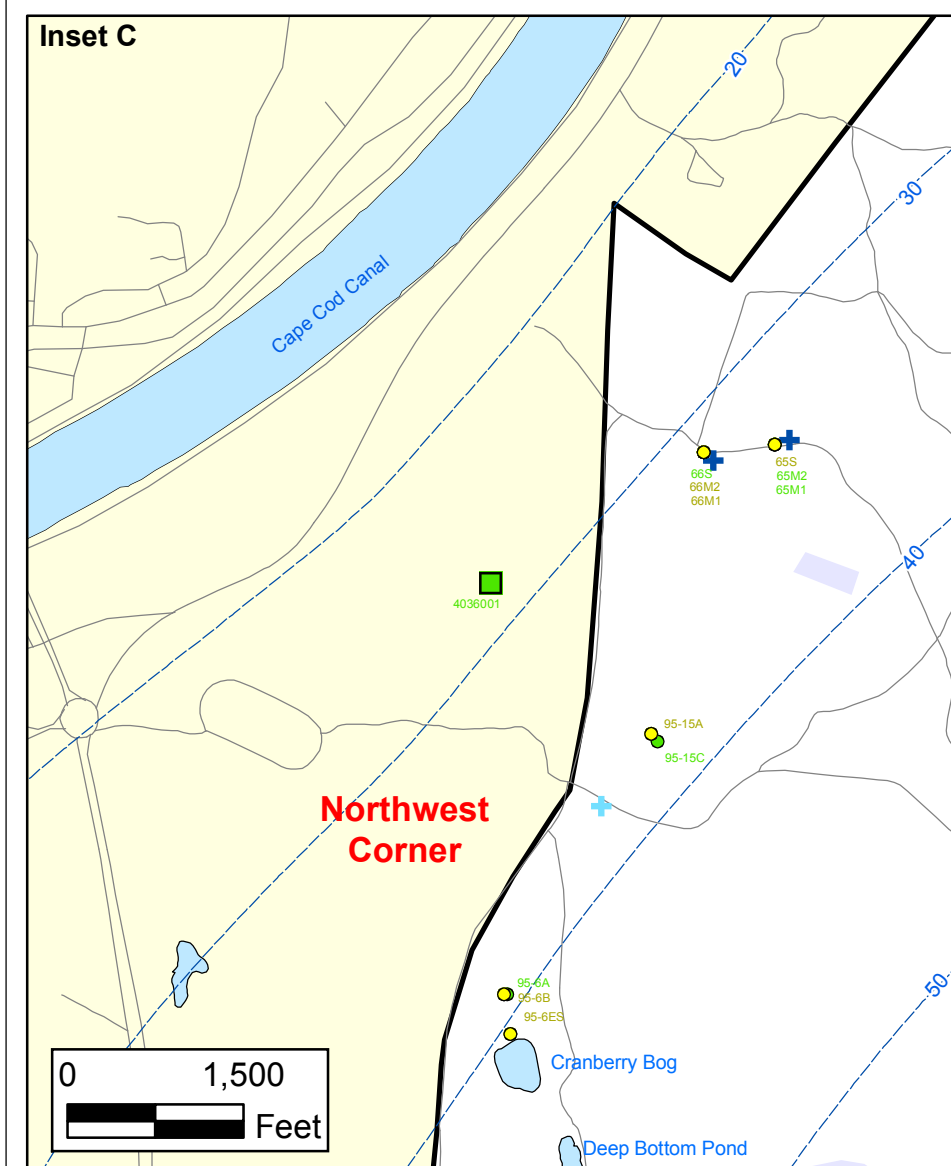
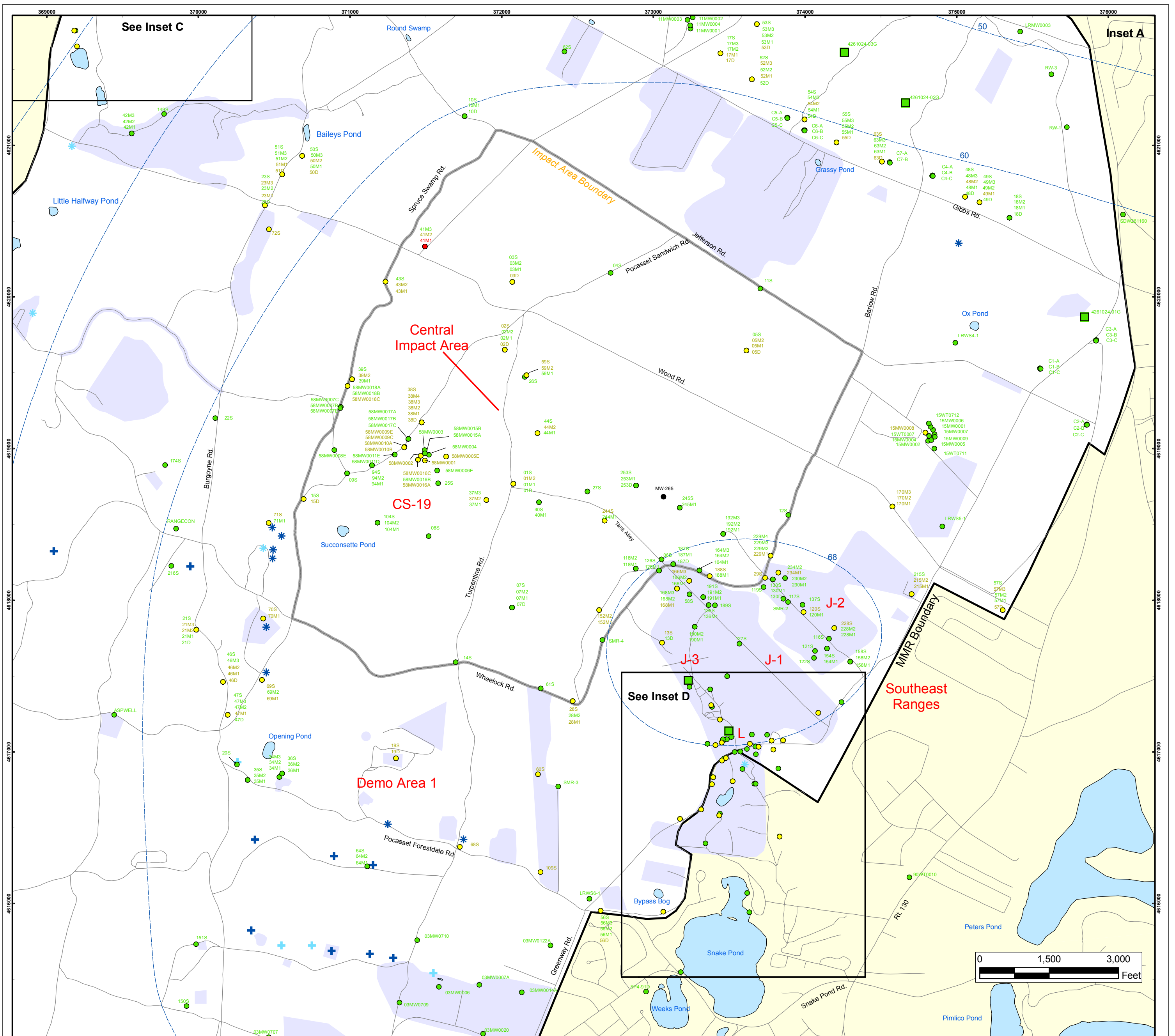


Herbicides & Pesticides in Groundwater Compared to Maximum Contaminant Level/Health Advisories Validated Data as of 3/30/07

AMEC Earth & Environmental, Inc.
 Westford, Massachusetts

FIGURE

7



Herbicides and Pesticides in Groundwater Compared to Maximum Contaminant Level/Health Advisories Validated Data as of 3/30/07

- Validated Detection Greater than or Equal to Maximum Contaminant Level/Health Advisories
- Validated Detection Less than Maximum Contaminant Level/Health Advisories
- Validated Non-Detect
- Military Range Areas
- + Current Gun Position
- * Current Mortar Position
- + Old Gun Position
- * Old Mortar Position
- Validated Non-Detect Water Supply Well
- Water Table Contour (Feet NGVD), AMEC, September 2003

Note: Map dot colors are representative of the highest historical concentration at each well and not the current concentration level. Historical data presented on this figure range from November 1996 through 2006.

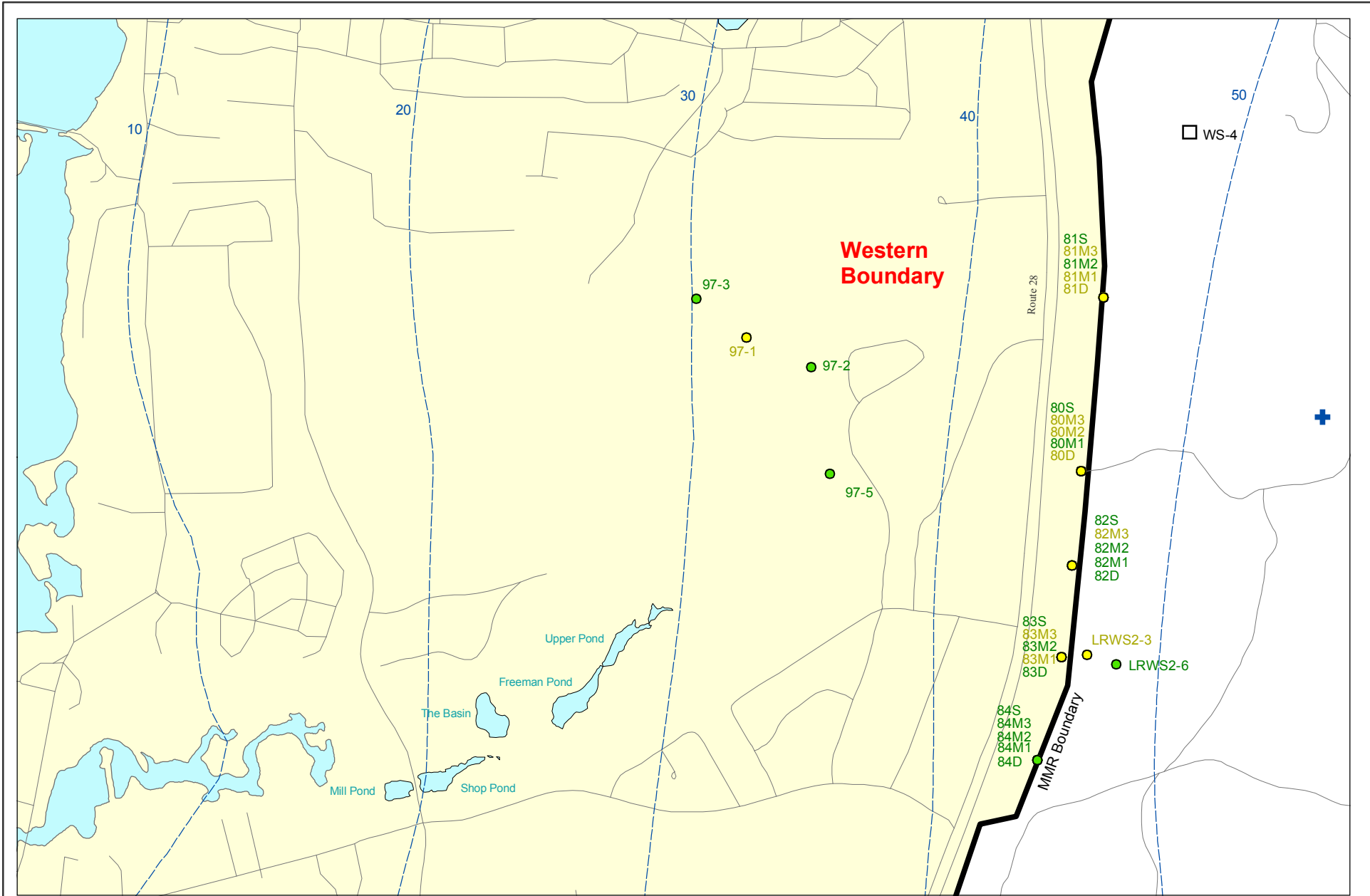
**Impact Area
Groundwater Study Program**

Sources & Notes
Base map data from US Geological Survey
7 1/2 minute Topographic Maps
Source: Office of Geographic and
Environmental Information (MassGIS)
Commonwealth of Massachusetts
Executive Office of Environmental Affairs

AMEC Earth & Environmental, Inc.
Westford, Massachusetts

FIGURE
7

Inset Map



Sources & Notes:
 Base map data from US Geological Survey
 7 1/2 minute Topographic maps.
 Source: Office of Geographic and
 Environmental Information (MassGIS)
 Commonwealth of Massachusetts
 Executive Office of Environmental Affairs

- Validated Detection Less than Maximum Contaminant Level/Health Advisories
- Validated Non-Detect
- Proposed Water Supply Well
- + Current Gun Position
- Water Table Contour (Feet NGVD), AMEC, September 2003

Note: Map dot colors are representative of the highest historical concentration at each well and not the current concentration level. Historical data presented on this figure range from November 1996 through 2006.

Herbicides & Pesticides in Groundwater Compared to Maximum Contaminant Level/Health Advisories Validated Data as of 3/30/07



AMEC Earth & Environmental, Inc.
 Westford, Massachusetts

Inset Map B

FIGURE
7