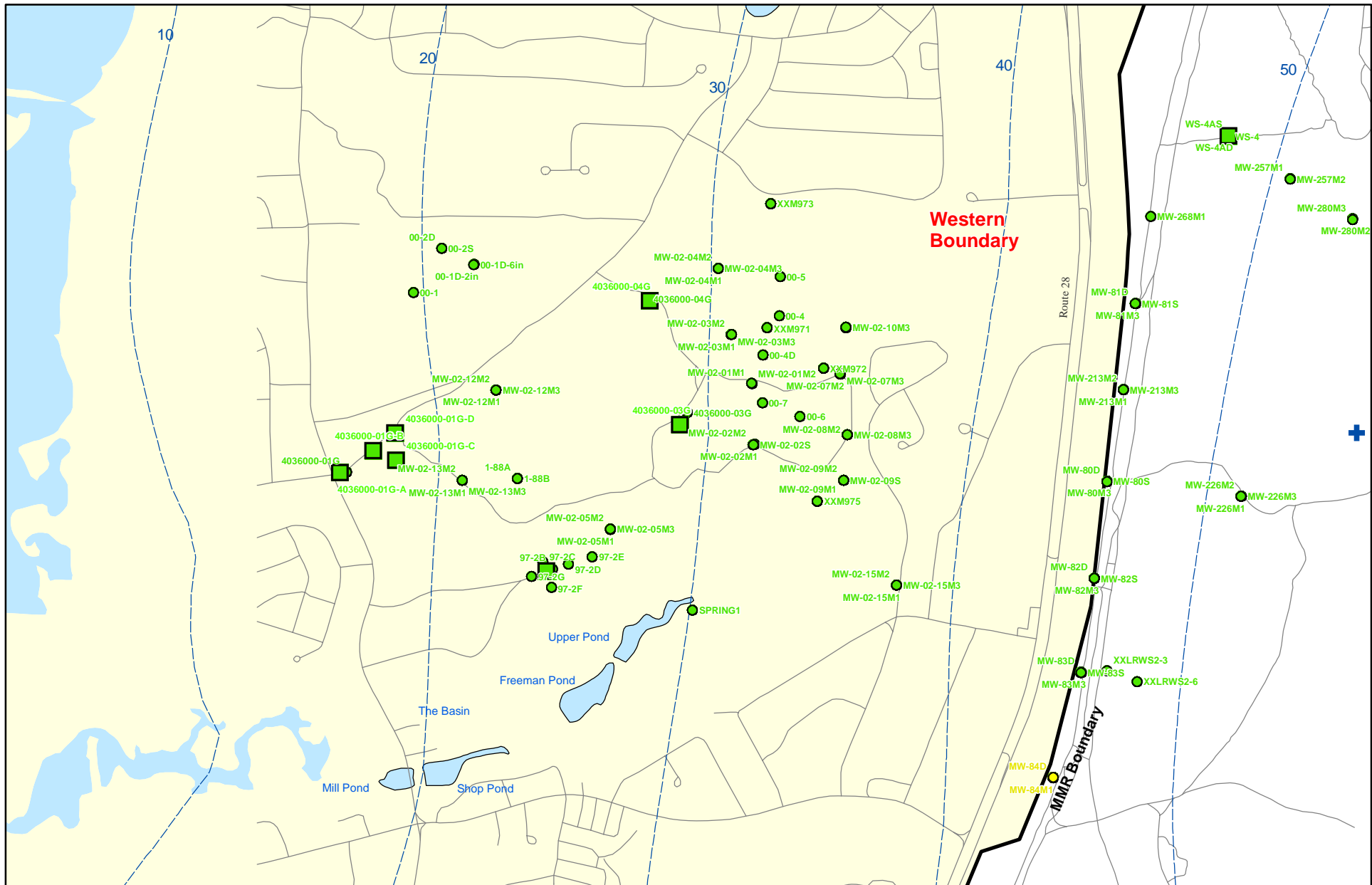




Explosives in Groundwater Compared to Maximum Contaminant Level/Health Advisories Validated Data as of 12/31/08

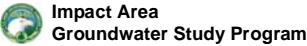


Sources & Notes:
 Base map data from US Geological Survey
 7 1/2 minute Topographic maps
 Source: Office of Geographic and
 Environmental Information (MassGIS)
 Commonwealth of Massachusetts
 Executive Office of Environmental Affairs

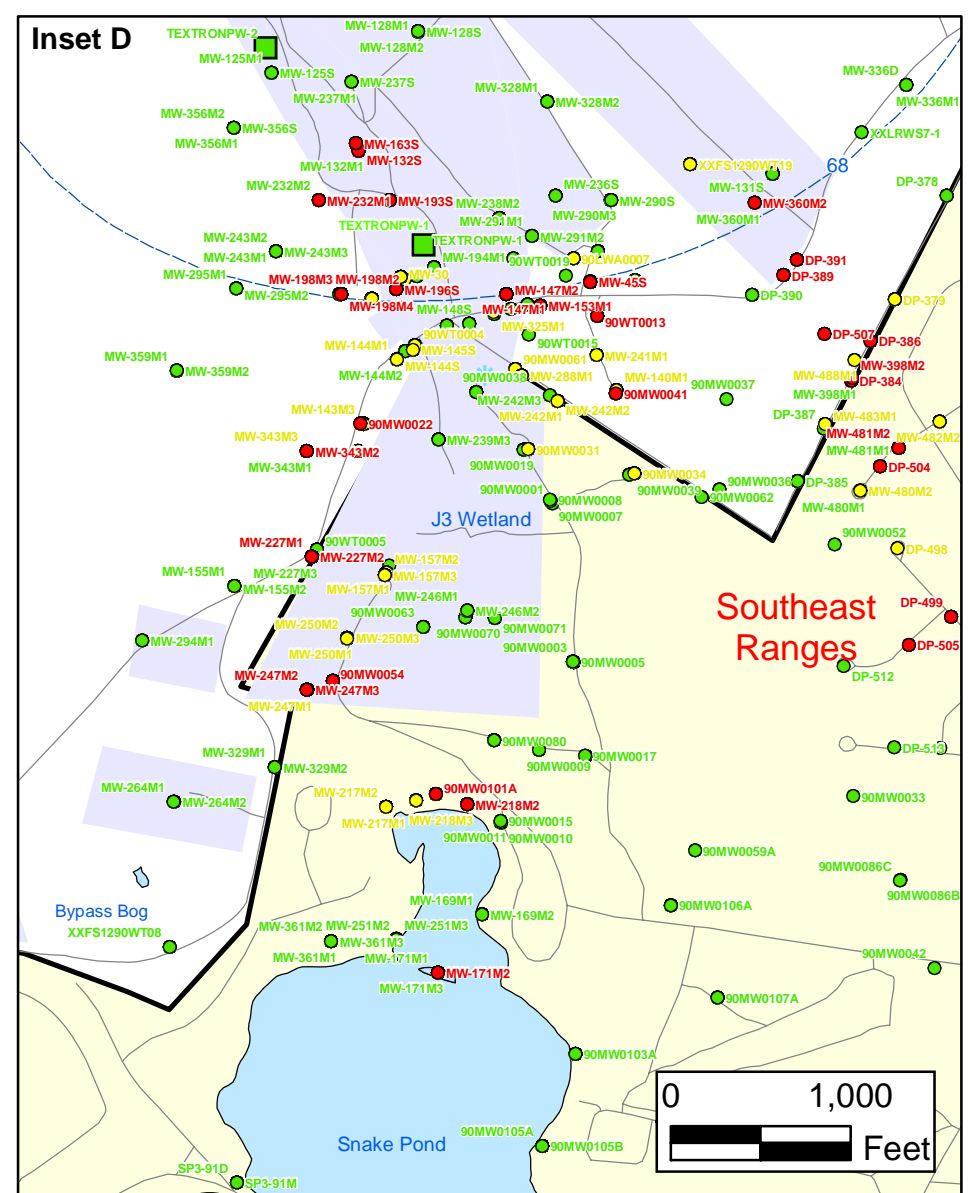
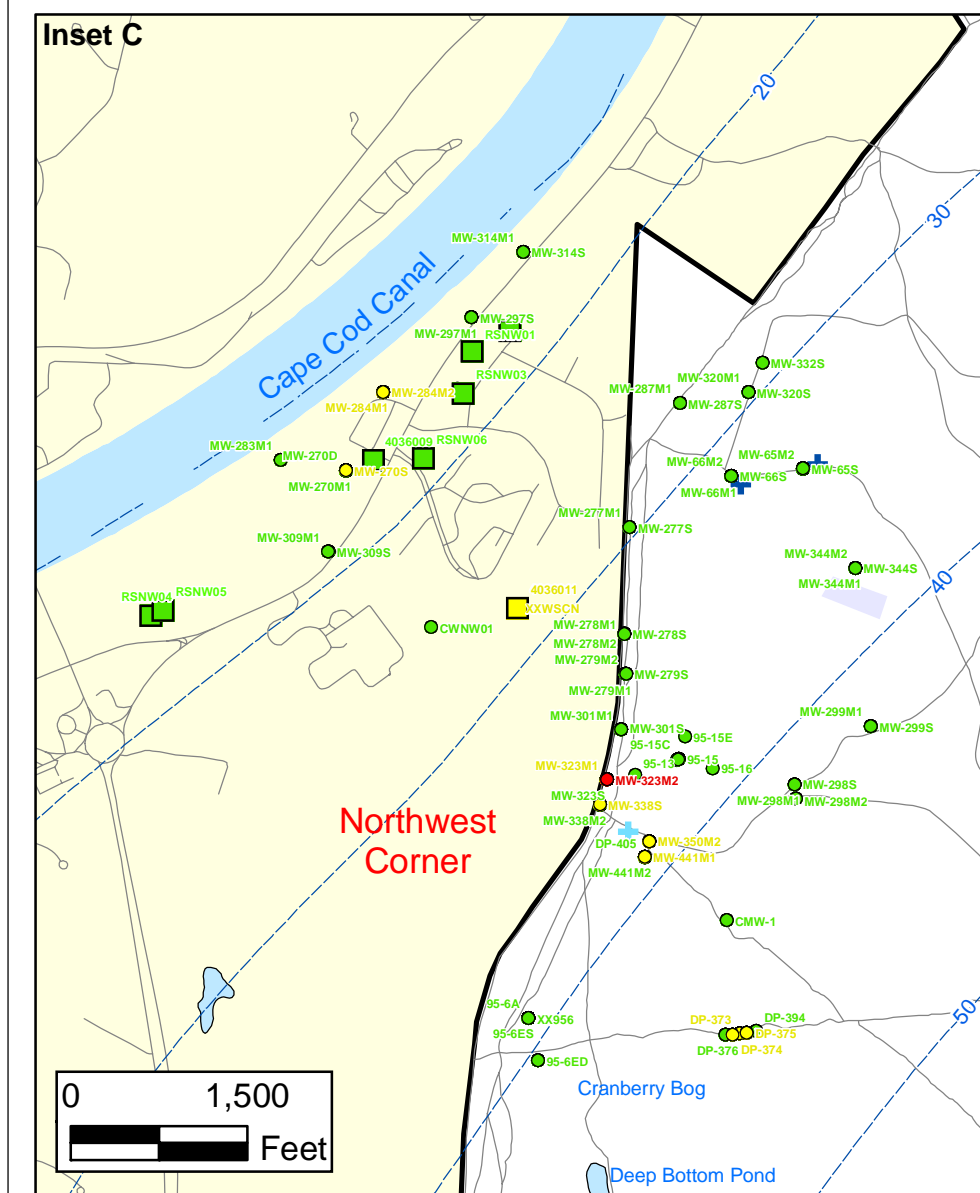
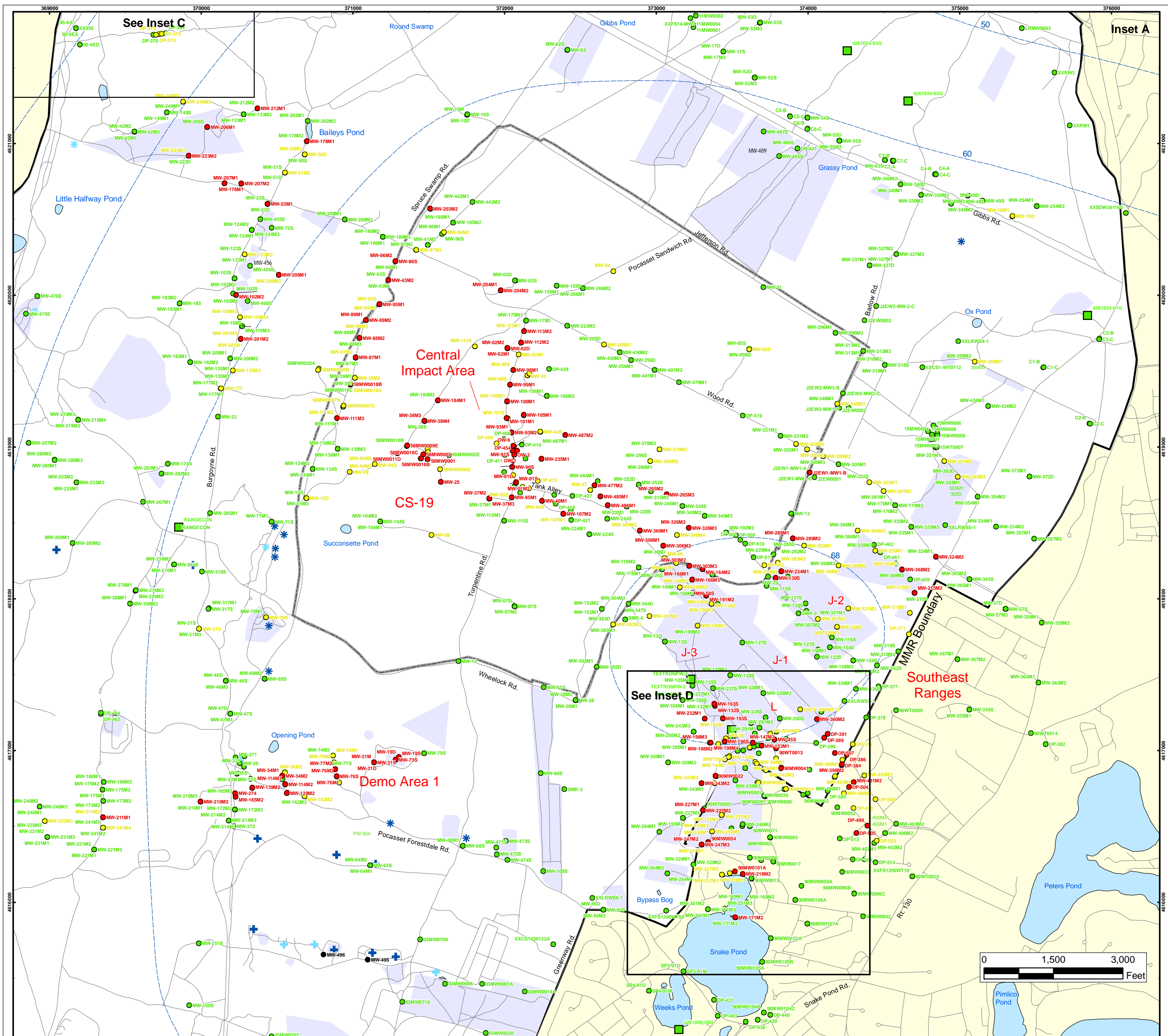
- Validated Detection Less than Maximum Contaminant Level/Health Advisories
- Validated Non-Detect
- Validated Non-Detect Water Supply Well
- Proposed Water Supply Well
- Water Table Contour (Feet NGVD)
AMEC, September 2003
- + Current Gun Position

Note: Map dot colors are representative of the highest historical concentration at each well and not the current concentration level. Historical data presented on this figure range from November 1996 through 2007.

Explosives in Groundwater Compared to Maximum Contaminant Level/Health Advisories
Validated Data as of 12/31/08



ECC-MMR
 Cape Cod, Massachusetts



Explosives in Groundwater Compared to Maximum Contaminant Level/Health Advisories

Validated Data as of 12/31/08

- Validated Detection Greater than or Equal to Maximum Contaminant Level/Health Advisories
- Validated Detection Less than Maximum Contaminant Level/Health Advisories
- Validated Non-Detect
- Data Pending
- Military Range Areas
- + Current Gun Position
- * Current Mortar Position
- + Old Gun Position
- * Old Mortar Position
- Validated Non-Detect Water Supply Well
- Validated Detection Less than Maximum Contaminant Level/Health Advisories Water Supply Well
- Water Table Contour (Feet NGVD), AMEC, September 2003

Note: Map dot colors are representative of the highest historical concentration at each well and not the current concentration level. Historical data presented on this figure range from November 1996 through 2007.

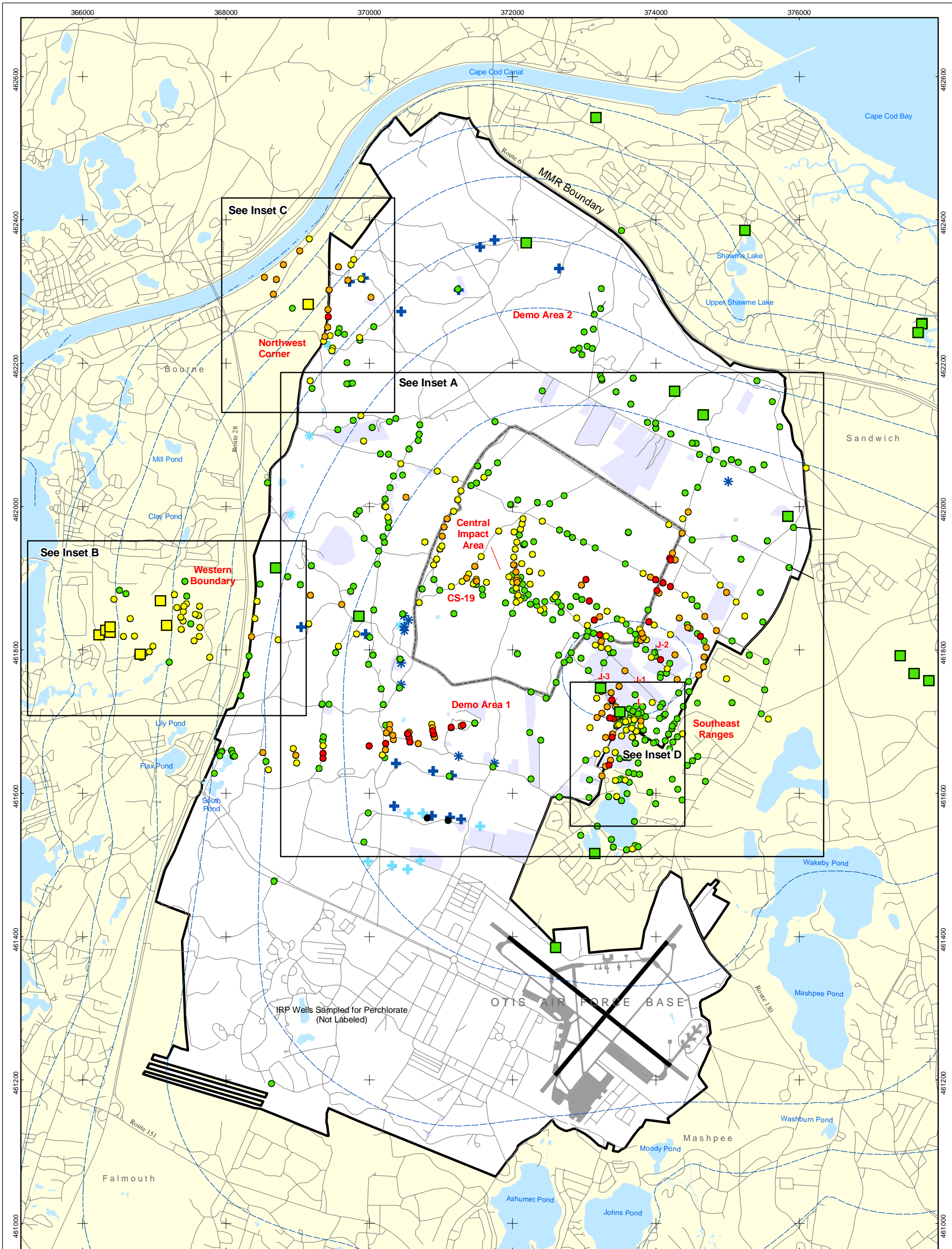
**Impact Area
Groundwater Study Program**

ECC-MMR
Cape Cod, Massachusetts

Sources & Notes
Base map data from US Geological Survey
7 1/2 minute Topographic Maps
Source: Office of Geographic and
Environmental Information (MassGIS)
Environmental Information (MassGIS)
Executive Office of Environmental Affairs

FIGURE 1

Inset Map

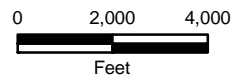


- Validated Detection Greater than or Equal to 24 ppb
- Validated Detection Greater than or Equal to 2 and Less than 24 ppb
- Validated Detection Greater than Non-Detect and Less than 2 ppb
- Validated Non-Detect

Note: Map dot colors are representative of the highest historical concentration at each well and not the current concentration level. Historical data presented on this figure range from November 1996 through 2007.

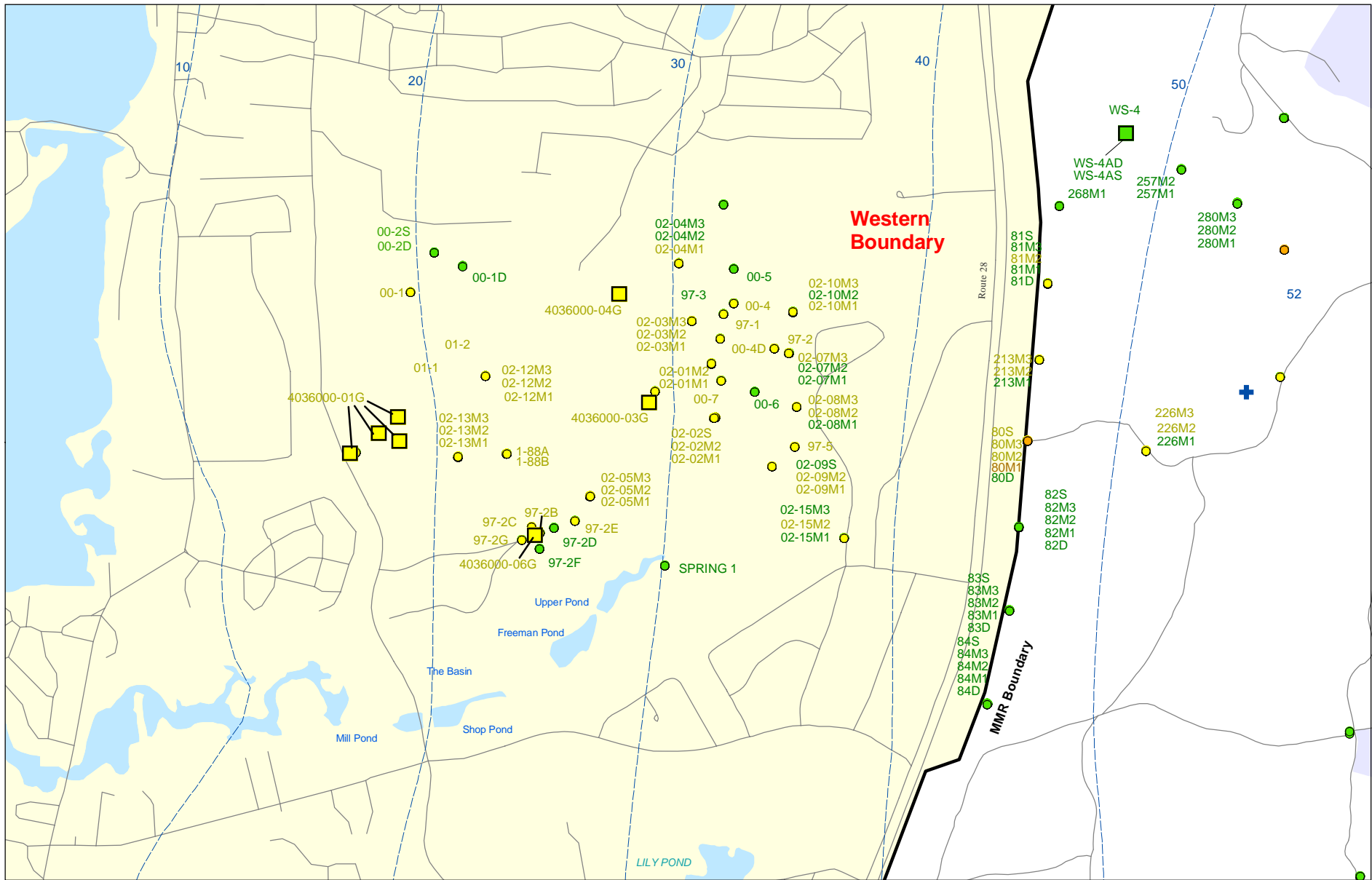
- Data Pending
- Proposed Monitoring Well
- ⊕ Current Gun Position
- * Current Mortar Position
- ⊕ Old Gun Position
- * Old Mortar Position

- Validated Non-Detect Water Supply Well
- Validated Detection Less than 2 ppb Water Supply Well
- Proposed Water Supply Well
- Water Table Contour (Feet NGVD) AMEC, September 2003
- Military Range Areas



Sources & Notes
 Base map data from US Geological Survey
 7 1/2 minute Topographic Maps
 Source: Office of Geographic and Environmental Information (MassGIS)
 Commonwealth of Massachusetts
 Executive Office of Environmental Affairs

**Perchlorate in Groundwater
 Compared to a 2 ppb Concentration
 Validated Data as of 12/31/08**



Sources & Notes:
 Base map data from US Geological Survey
 7 1/2 minute Topographic maps.
 Source: Office of Geographic and
 Environmental Information (MassGIS)
 Commonwealth of Massachusetts
 Executive Office of Environmental Affairs

- Validated Detection Greater than or Equal to 2 and Less than 24 ppb
- Validated Detection Greater than Non-Detect and Less than 2 ppb
- Validated Non-Detect

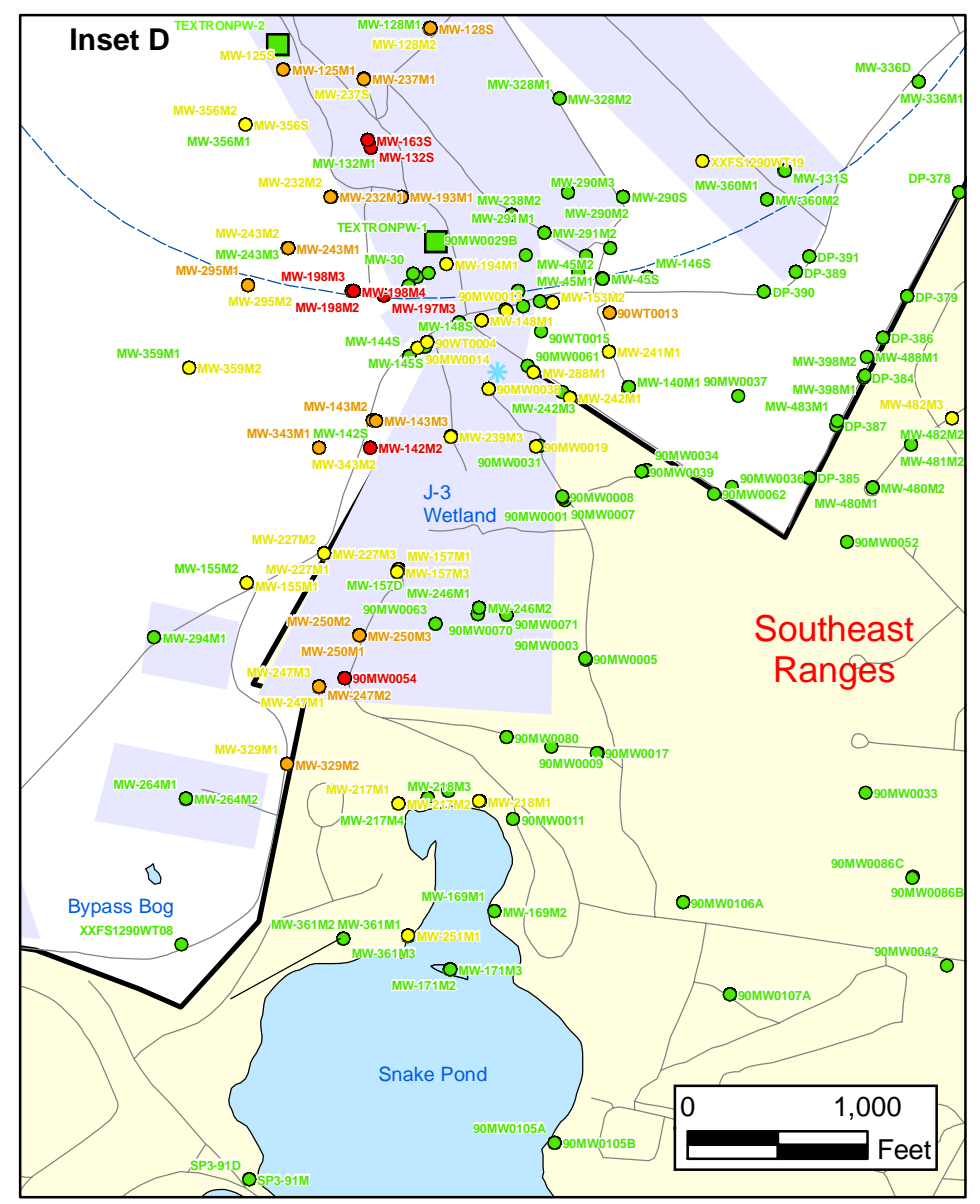
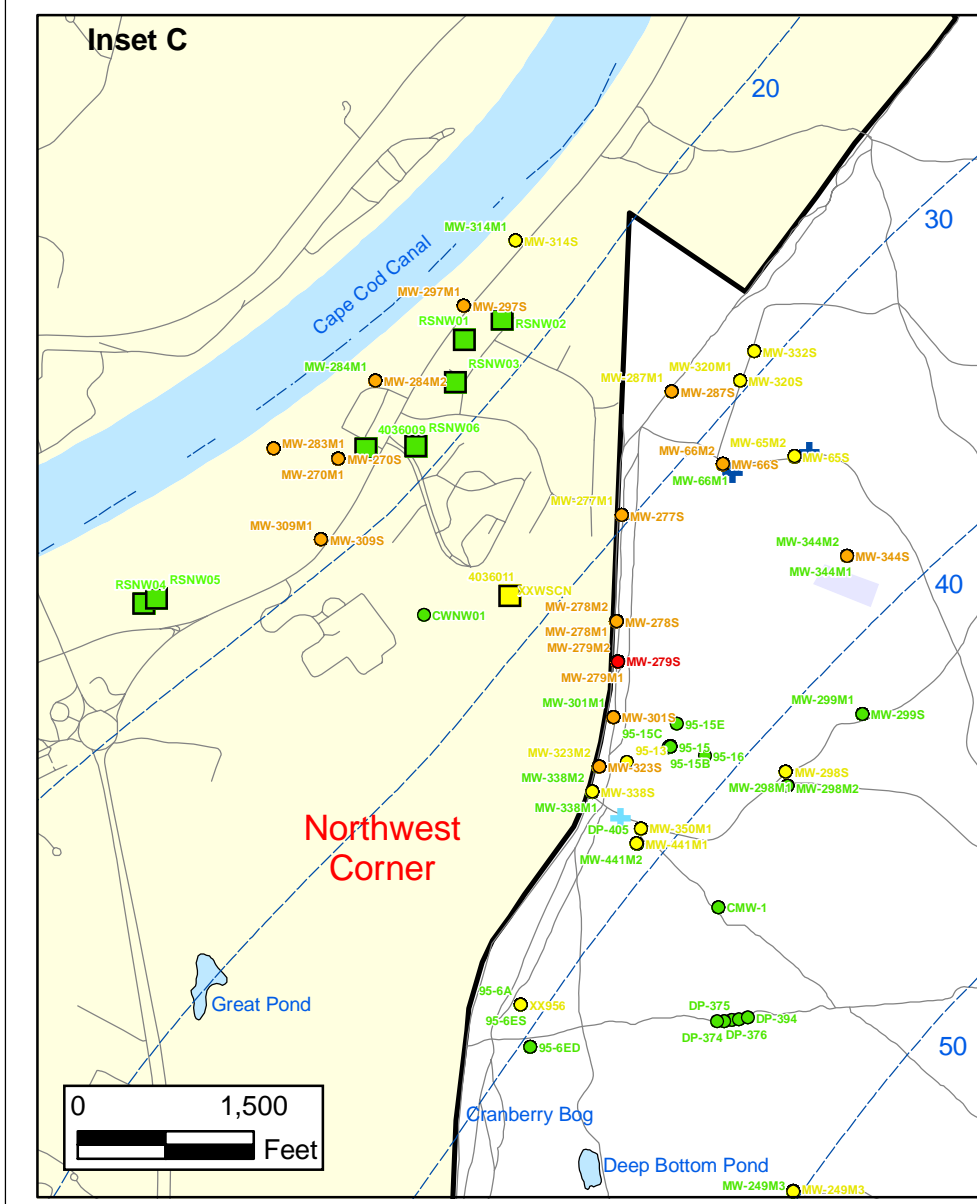
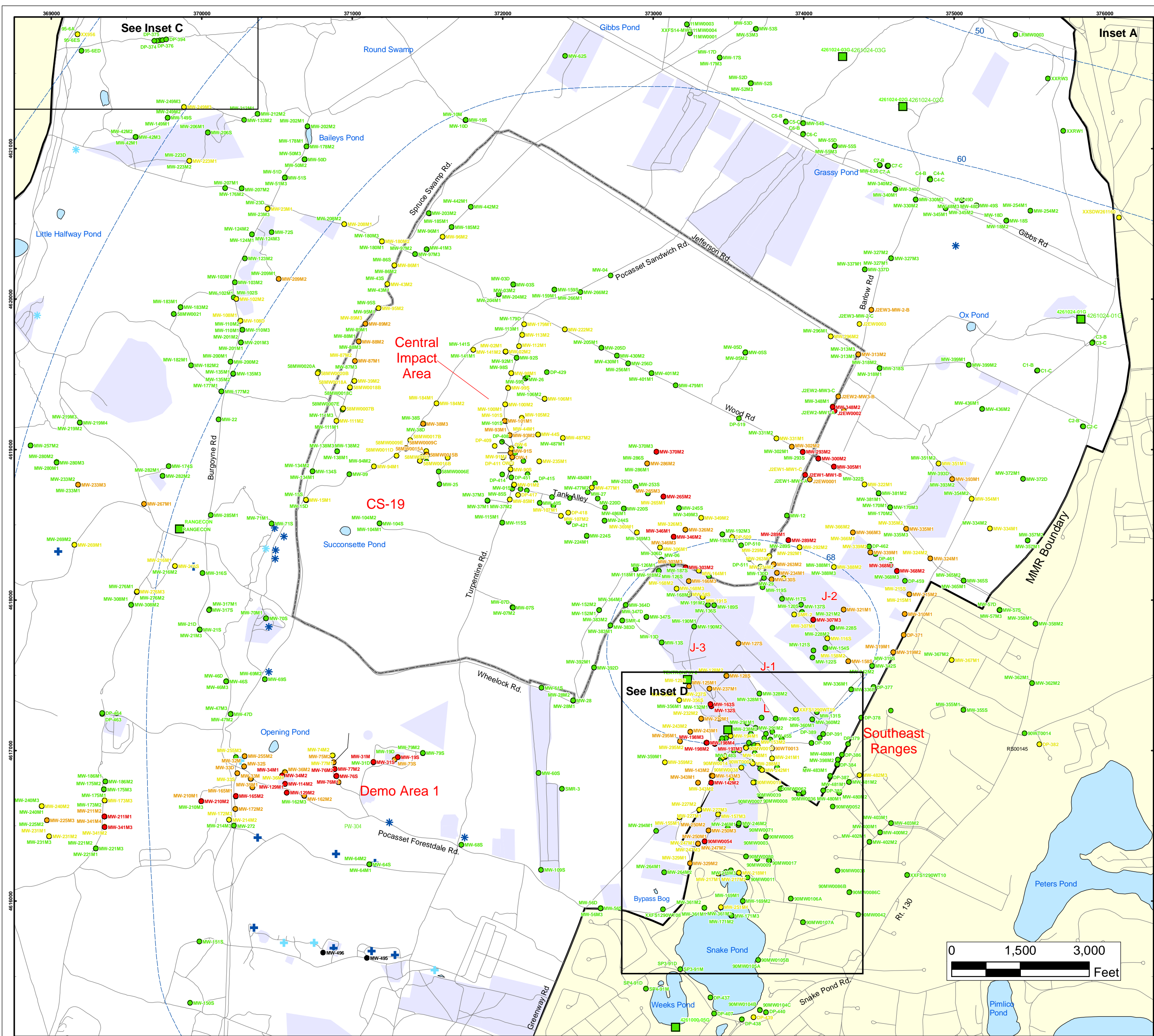
Note: Map dot colors are representative of the highest historical concentration at each well and not the current concentration level.
 Historical data presented on this figure range from November 1996 through 2007.

- Validated Detection Less than 2 ppb Water Supply Well
- Validated Non-Detect Water Supply Well
- + Current Gun Position
- Water Table Contour (Feet NGVD) AMEC, September 2003

Perchlorate in Groundwater Compared to a 2 ppb Concentration Validated Data as of 12/31/08



Inset Map B **8**



Perchlorate in Groundwater Compared to a 2 PPB Concentration Validated Data as of 12/31/08

- Validated Detection Greater than or Equal to 24 ppb
- Validated Detection Greater than or Equal to 2 and Less than 24 ppb
- Validated Detection Less than 2 ppb
- Validated Non-Detect
- Data Pending
- Military Range Areas
- + Current Gun Position
- * Current Mortar Position
- + Old Gun Position
- * Old Mortar Position
- Validated Non-Detect Water Supply Well
- Validated Detection Less Than 2 ppb Water Supply Well
- Water Table Contour (Feet NGVD), AMEC, September 2003

Note: Map dot colors are representative of the highest historical concentration at each well and not the current concentration level. Historical data presented on this figure range from November 1996 through 2007.

ECC-MMR
Cape Cod, Massachusetts

FIGURE
8