



Impact Area Groundwater Study Program Look-ahead 2026

JBCC Cleanup Team March 25, 2026

Ms. Jodi Lyn Cutler

IAGWSP Remediation Manager



Operable Units Status

OU with Groundwater Treatment:

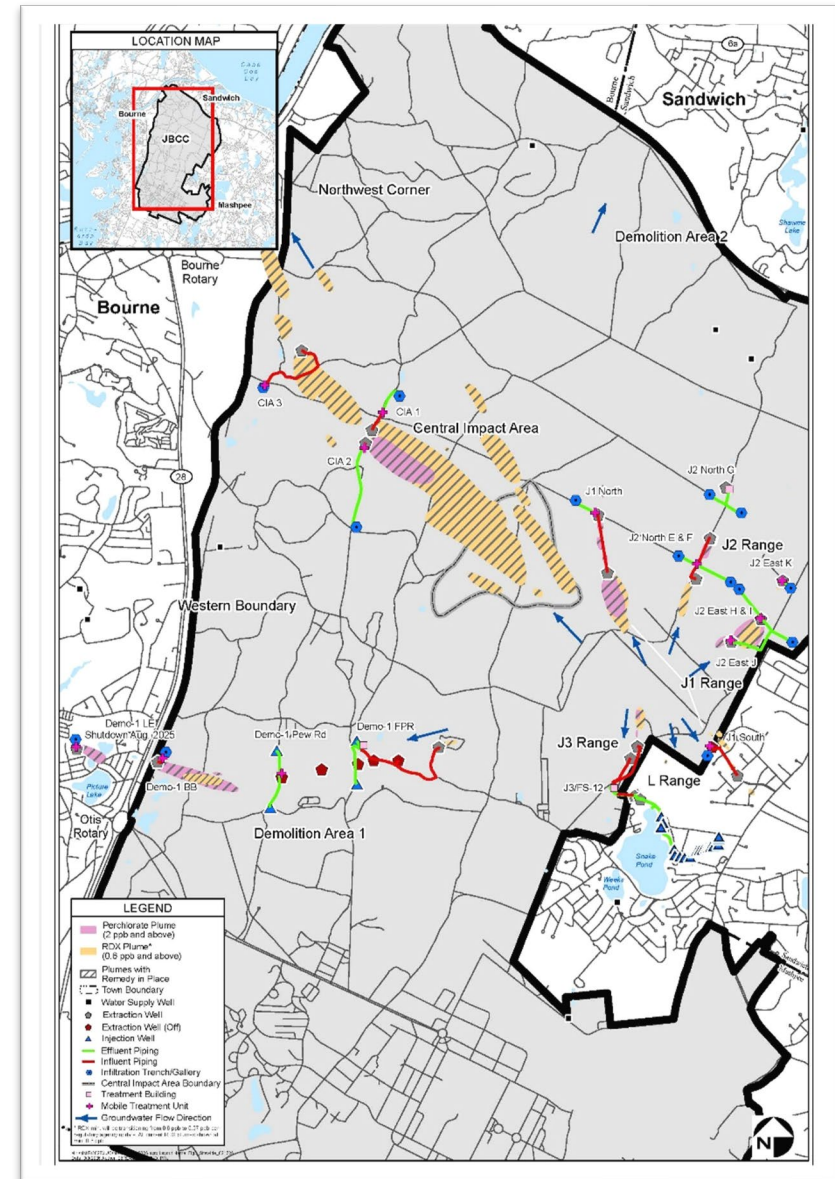
- Central Impact Area
- Demolition Area 1
- J-1 Range (North & South)
- J-2 Range (North & East)
- J-3 Range

OUs in Closure Process:

- Northwest Corner
- Demolition Area 2
- L Range

OUs with No Further Action/Closed:

- Gun and Mortar Positions (NFA)
- Former K Range (NFA)
- Former A Range
- Small Arms Ranges
- Training Areas
- Western Boundary
- BA-4 Disposal Area





Ongoing and Upcoming Projects for 2026

◆ Decision Document (DD) Addendum

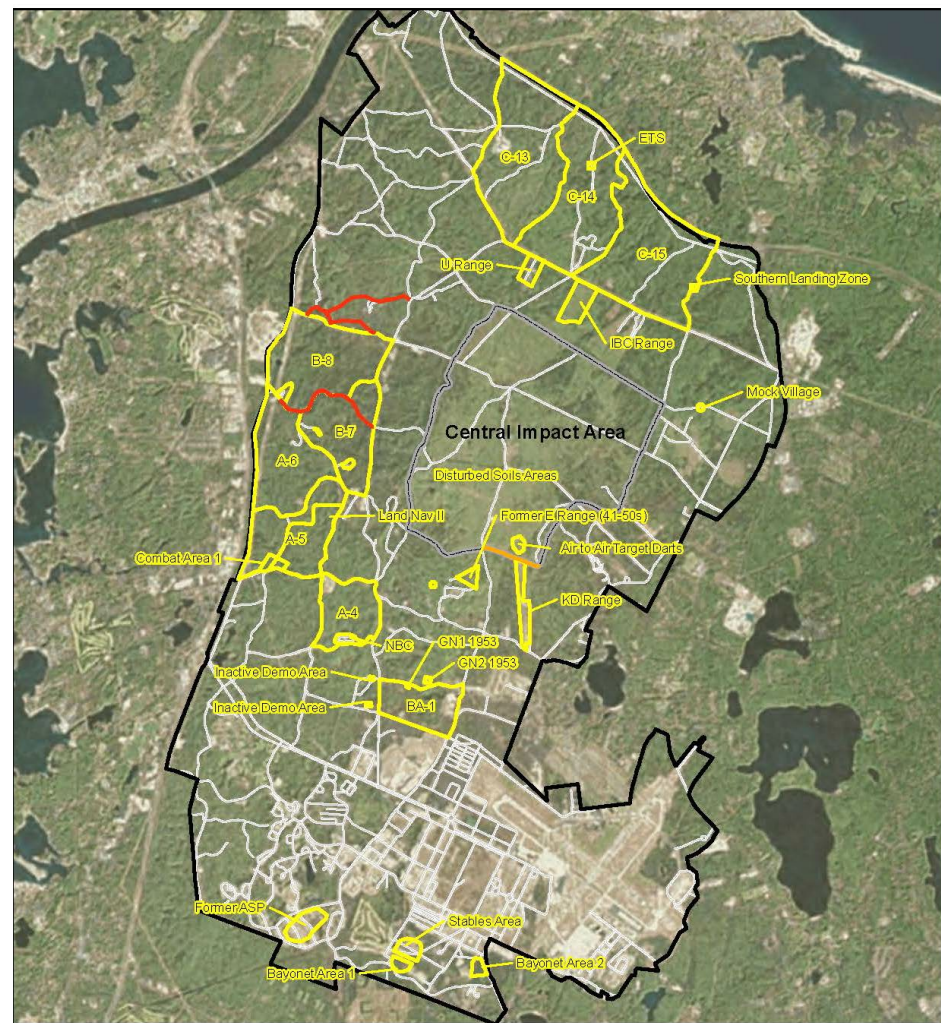
- Required due to an update to the Environmental Protection Agency (EPA) Regional Screening Level (RSL) for tap water for RDX.
 - New tap water RSL for RDX of 0.97 micrograms per liter ($\mu\text{g/L}$), is higher than the current cleanup level of 0.6 $\mu\text{g/L}$ used in the DDs.
- Addendum modifies the DDs for the Central Impact Area (CIA), Demolition Area 1, J-1 Range, J-2 Range, J-3 Range, and L Range.
- At the L Range, the new cleanup level has already been met, and site closeout can begin.
- At the CIA, it is anticipated that the remedy will achieve cleanup standards ten years sooner than originally estimated.
- For Demolition Area 1, J-1 Range, J-2 Range and J-3 Range, raising the cleanup level results in minor reductions in time to achieve cleanup objectives.



Ongoing and Upcoming Projects for 2026

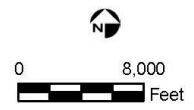
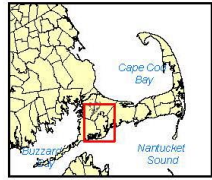
◆ Closure of Small Arms Ranges and Training Areas Operable Units

- Project notes have been developed to document that all post-DD requirements under the Training Areas Operable Unit (OU) DD and the Small Arms Ranges DD have been completed.
 - The Training Areas DD required limited actions of data review and/or confirmatory sampling, and geophysical screening for six Training Areas: B-7, C-15, 1949 Engineer Training Site, Former E Range, KD Range (West) and IBC Range.
 - The Small Arms Ranges required additional action to be taken to address residual contamination. Soil sampling and/or removal actions were implemented at KD East, Former B, Former C, and Former D Ranges. B, C, G, N, Former M-2, and Former N Ranges.
- All activities have been completed, and completion of work reports have been issued for both OUs.
- EPA issues Certificates of Completion/Compliance that certifies that the activities required have been performed in accordance with the DDs.
- Operational-Active ranges have an Operations, Maintenance and Monitoring Plan (OMMP) in place that outline range-specific monitoring. Long-term groundwater monitoring at these ranges is conducted by the Massachusetts Army National Guard with the results documented in a separate report, as required by the respective OMMPs



- Training Area
- Demo Area 3
- Demo Area 4
- Impact Area Boundary
- JBCC Boundary
- Roads

Figure 1-1
Location of Training Areas



- Small Arms Range
- Impact Area Boundary
- JBCC Boundary

Figure 1-1
Location of Small Arms Ranges





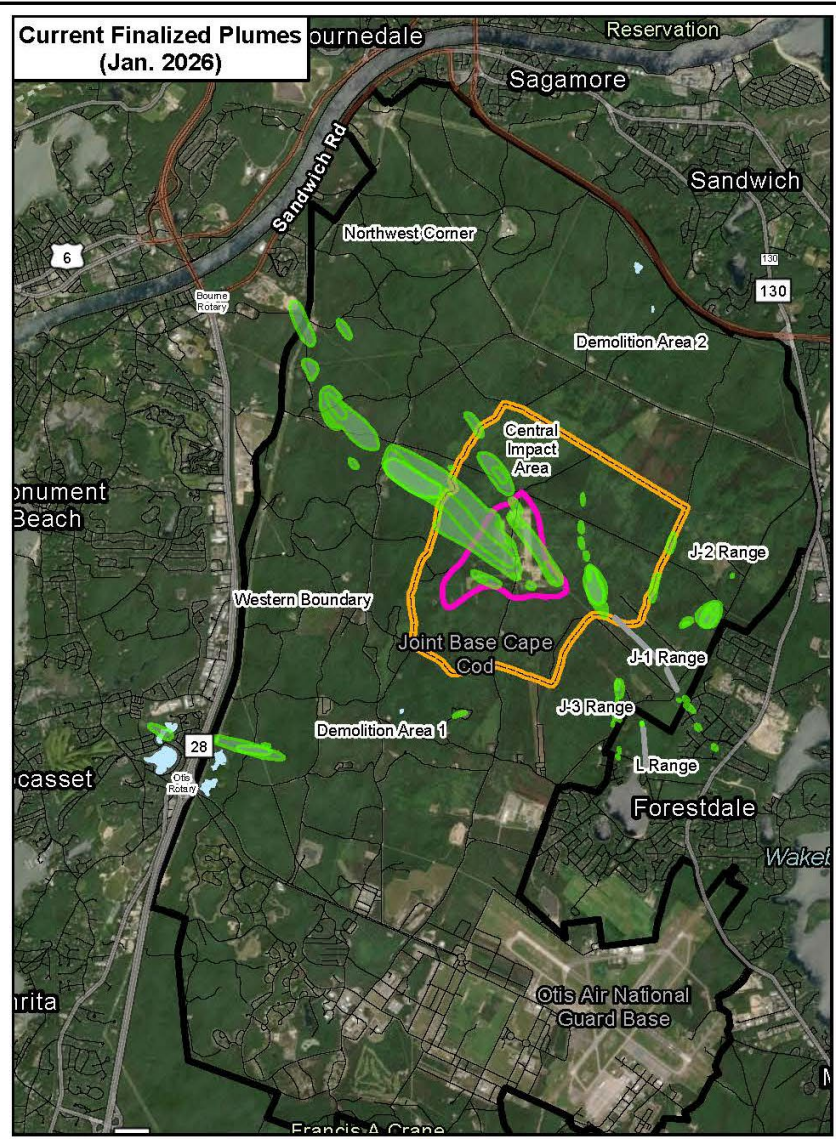
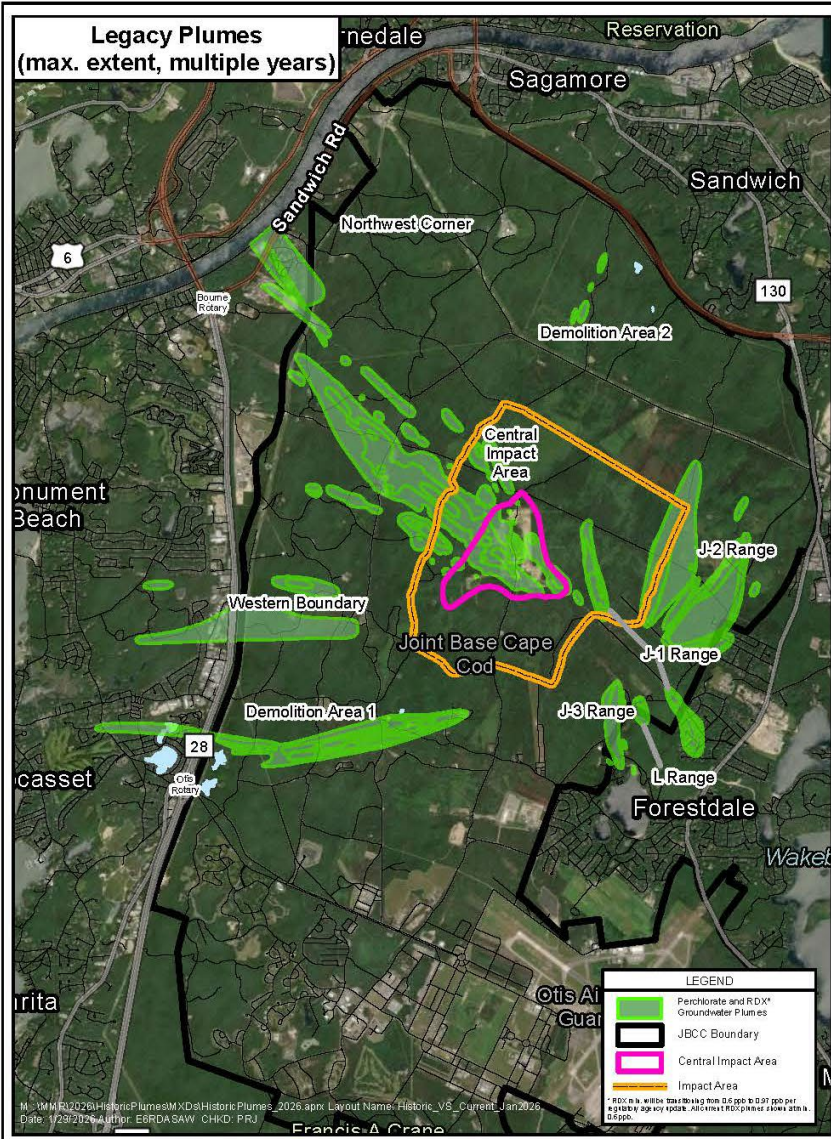
Ongoing and Upcoming Projects for 2026

◆ Operations & Maintenance (O&M) Activities and System Optimizations

- **Daily system checks** are performed to ensure treatment systems buildings and infrastructure are operational and have not been damaged.
- **O&M duties** and monthly sampling at all groundwater treatment facilities will continue. This work monitors treatment plant performance to ensure that they are removing contaminants as designed.
- **Sampling** crews are continually performing annual and semi-annual groundwater monitoring. Crews rotate through groundwater sites during the year to complete the necessary sampling.
- **Annual reports** with sampling results are prepared and presented to EPA and MassDEP at technical meetings.
 - Includes periodic updates to plume shells, J-1 South plume being updated in 2026.
 - Finalize Comprehensive PFAS Report
- **Annual Land Use Controls** report is being prepared.
 - Documents annual activities that minimize the potential for human exposure to contamination by limiting land or resource use.



Groundwater Plumes Over Time





Questions?

