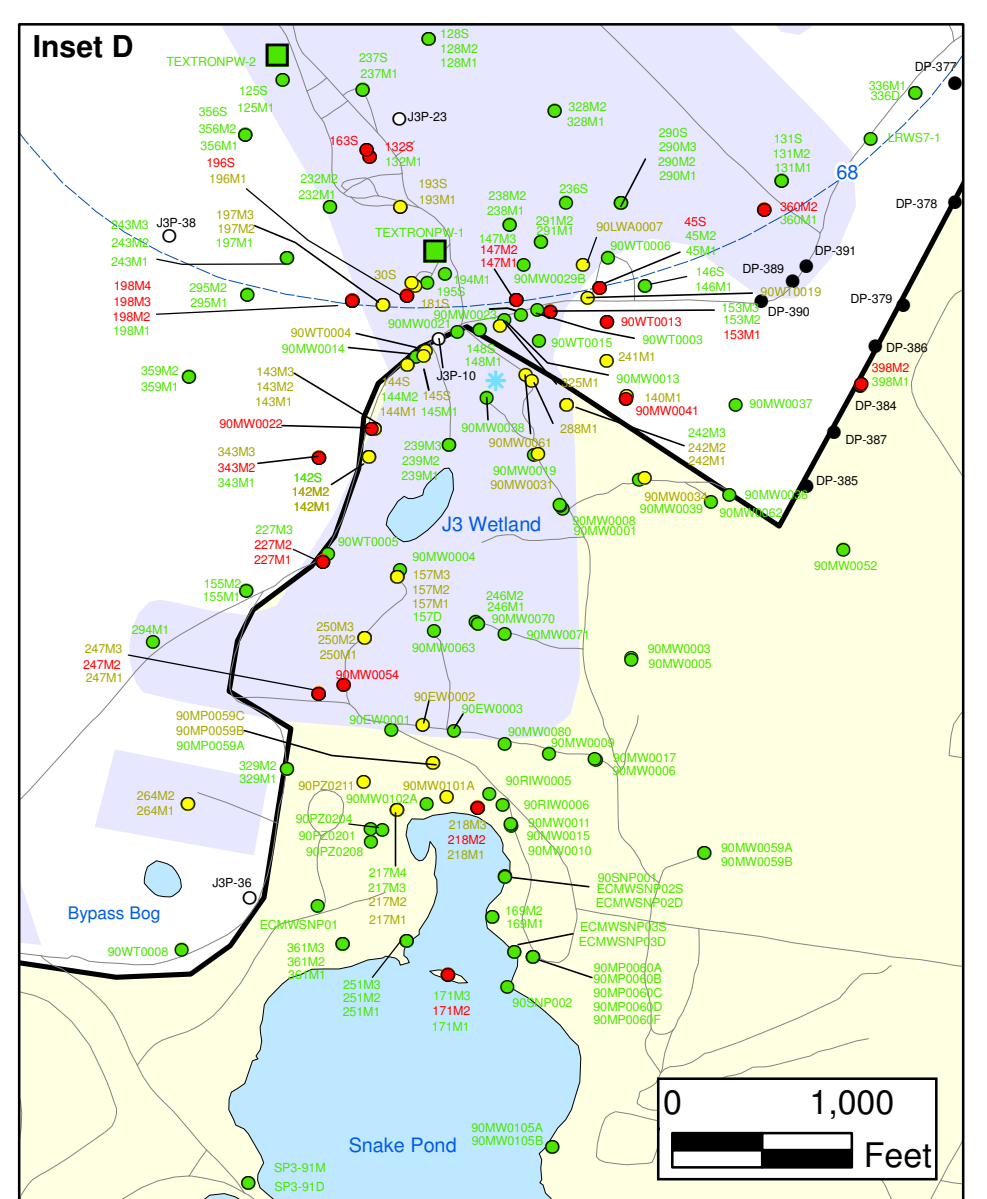
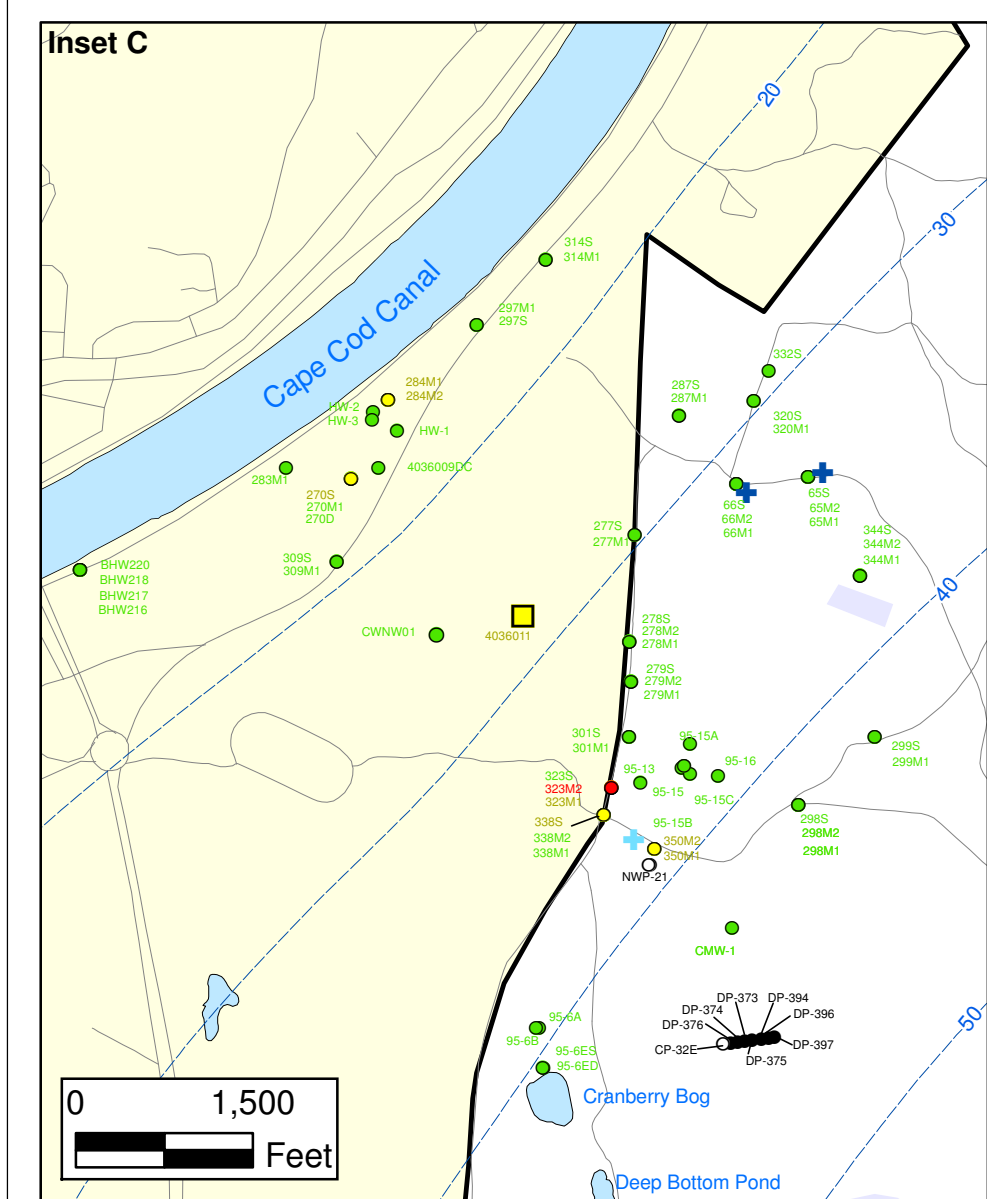
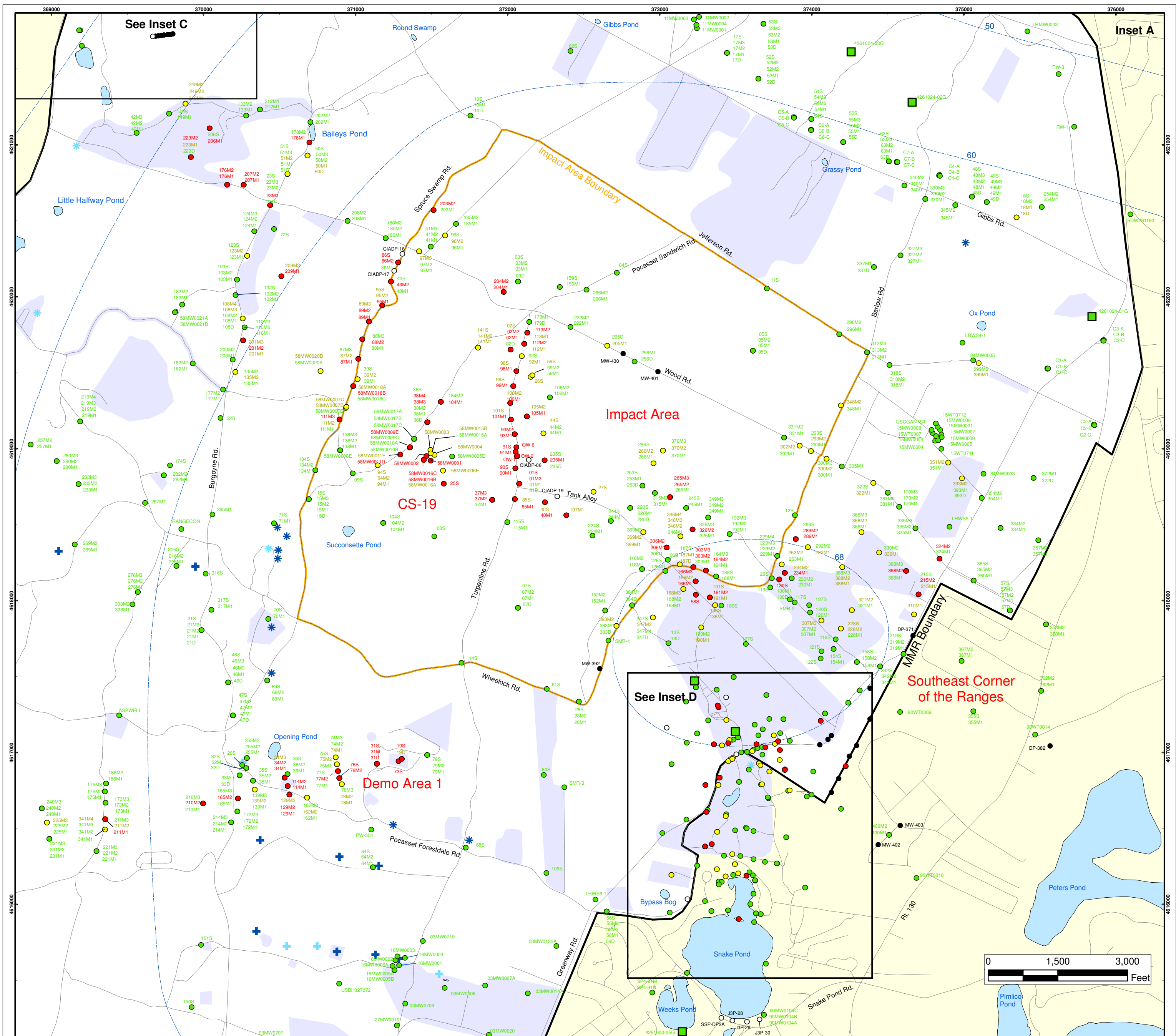


**Explosives in Groundwater Compared to Maximum Contaminant Level/Health Advisories Validated Data as of 12/22/05**

**FIGURE 1**



### Explosives in Groundwater Compared to Maximum Contaminant Level/Health Advisories Validated Data as of 12/22/05

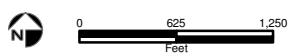
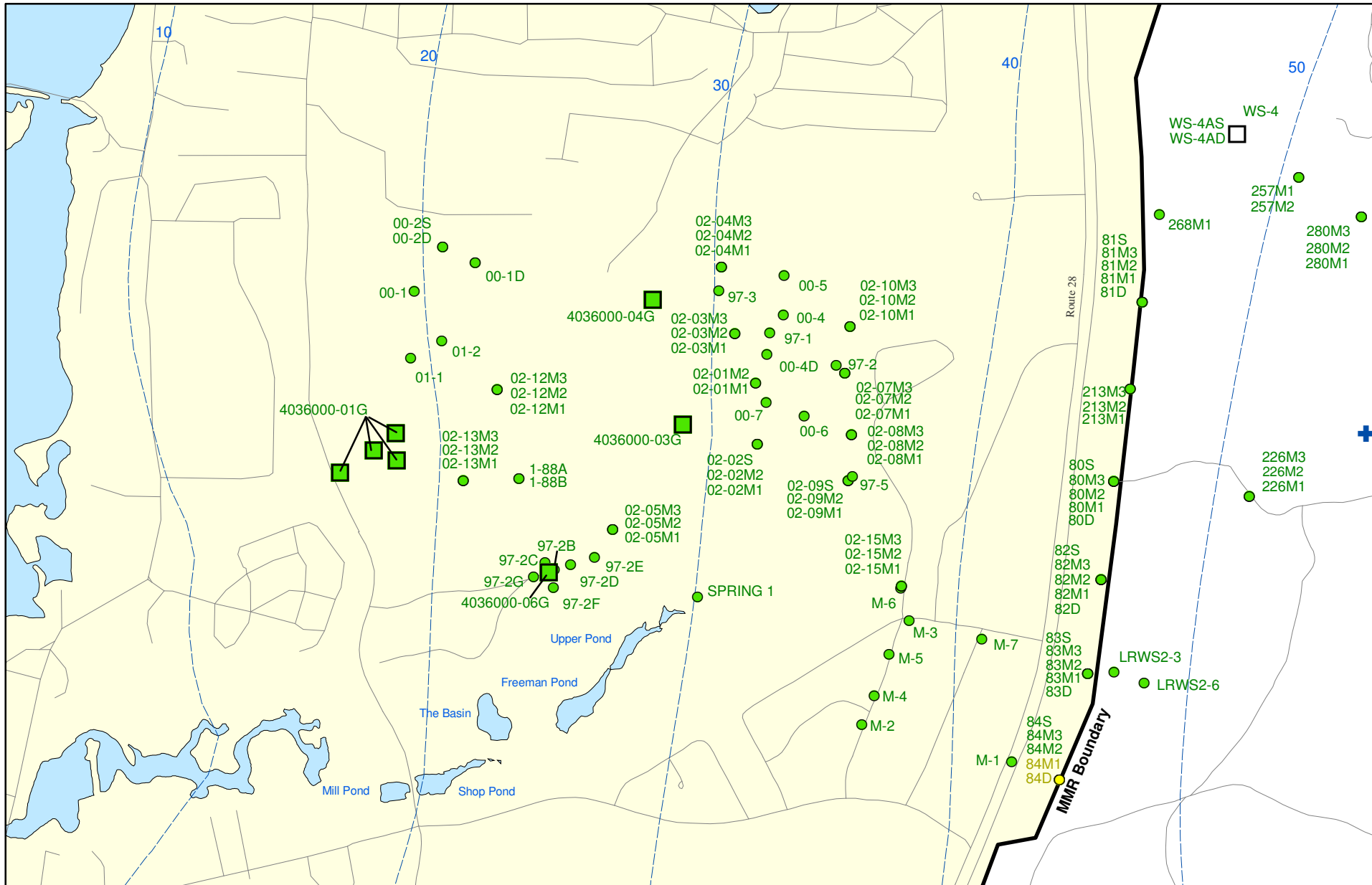
- Validated Detection Greater than or Equal to Maximum Contaminant Level/Health Advisories
- Validated Detection Less than Maximum Contaminant Level/Health Advisories
- Validated Non-Detect
- Data Pending
- Proposed Monitoring Well
- Military Range Areas
- Current Gun Position
- Current Mortar Position
- Old Gun Position
- Old Mortar Position
- Validated Non-Detect Water Supply Well
- Validated Detection Less than Maximum Contaminant Level/Health Advisories Water Supply Well
- Water Table Contour (Feet NGVD), AMEC, September 2003

**Impact Area Groundwater Study Program**

AMEC Earth & Environmental, Inc.  
Westford, Massachusetts

Source: Office of Geographic and Environmental Information (MassGIS), Commonwealth of Massachusetts, Executive Office of Environmental Affairs

**FIGURE 1**



Sources & Notes:  
 Base map data from US Geological Survey  
 7 1/2 minute Topographic maps.  
 Source: Office of Geographic and  
 Environmental Information (MassGIS)  
 Commonwealth of Massachusetts  
 Executive Office of Environmental Affairs

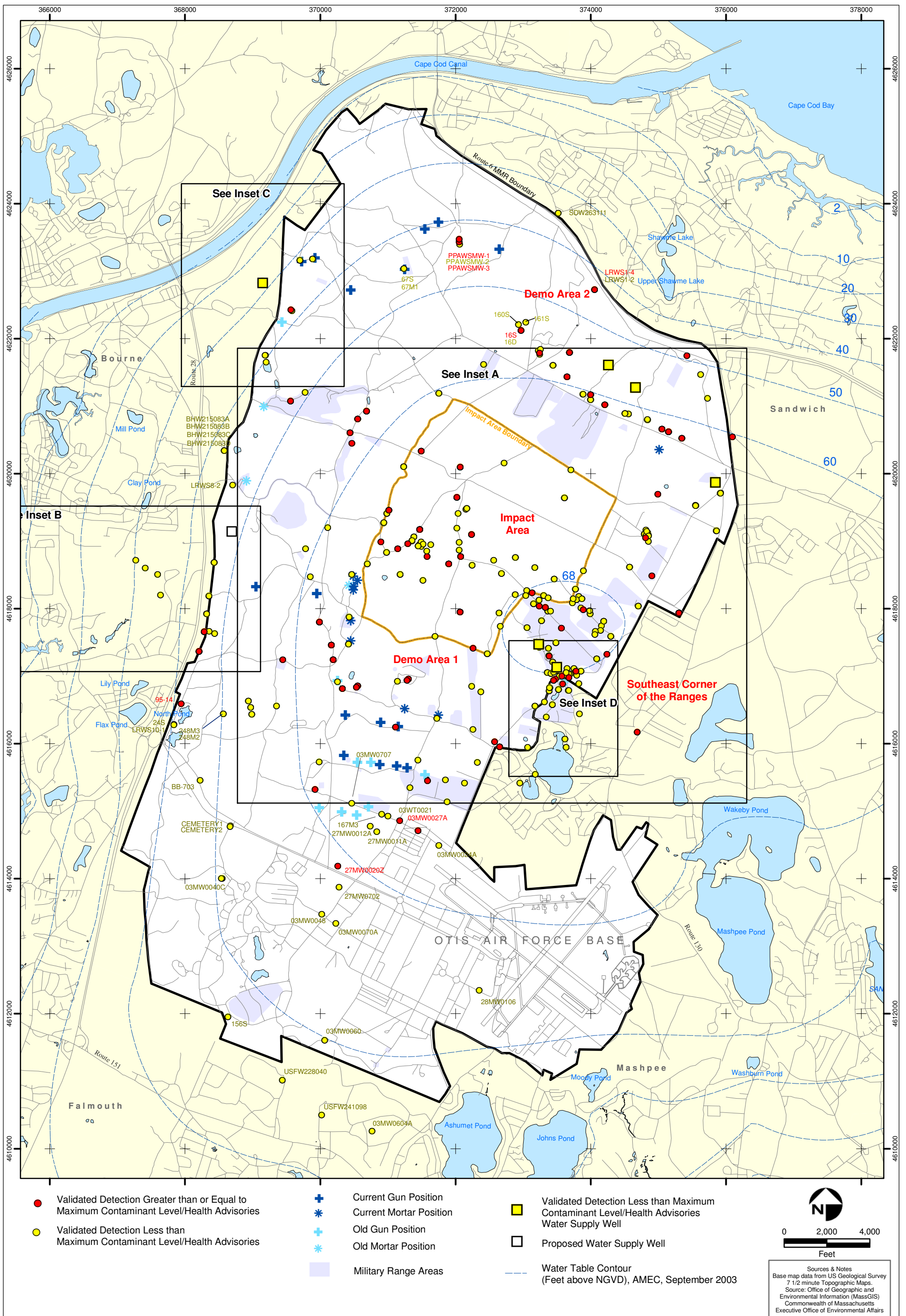
- Validated Detection Less than Maximum Contaminant Level/Health Advisories
- Validated Non-Detect
- Validated Non-Detect Water Supply Well
- Proposed Water Supply Well
- + Current Gun Position
- Water Table Contour (Feet NGVD)  
AMEC, September 2003

**Explosives in Groundwater Compared to  
 Maximum Contaminant Level/Health Advisories  
 Validated Data as of 12/22/05**



AMEC Earth & Environmental, Inc.  
 Westford, Massachusetts

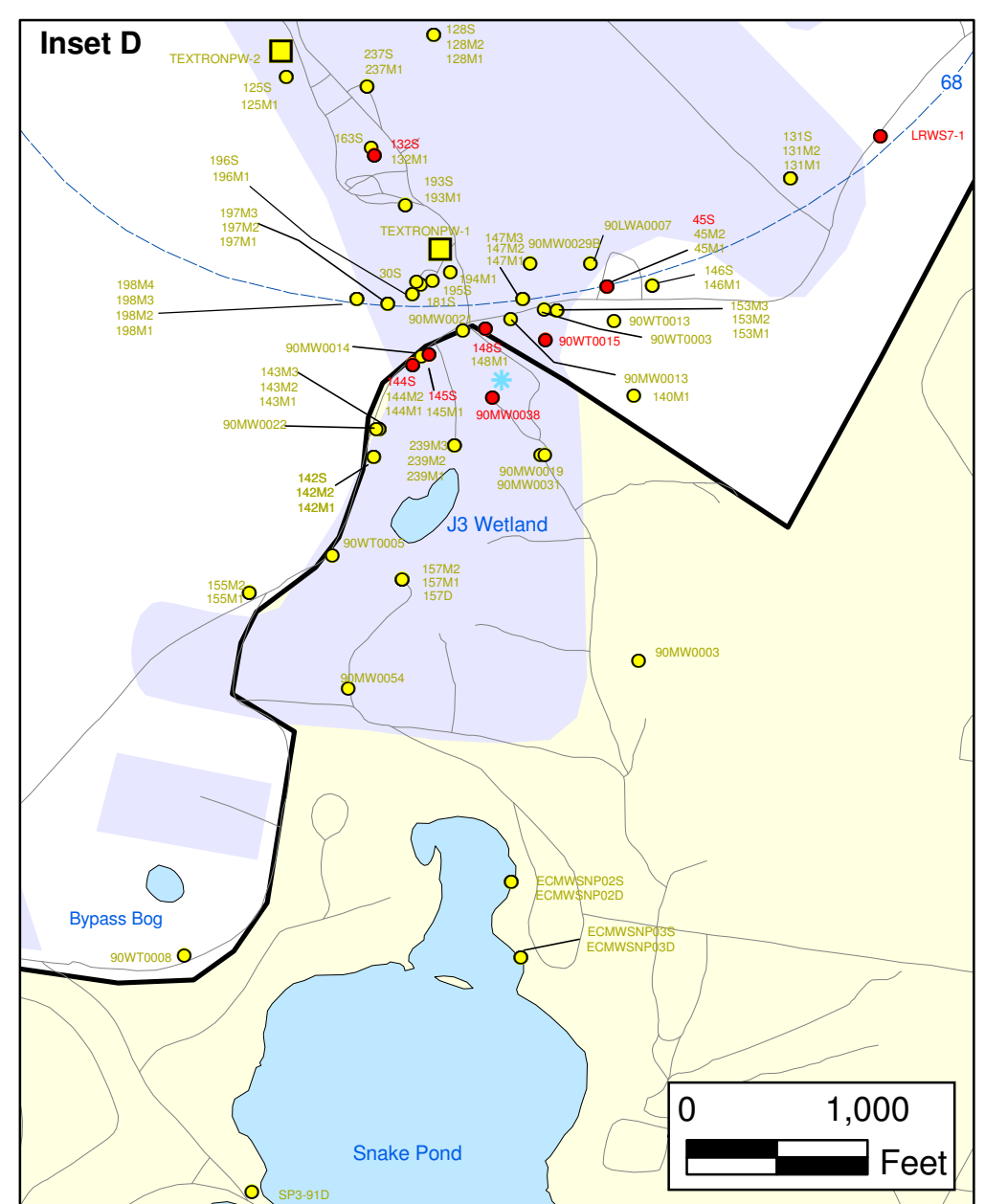
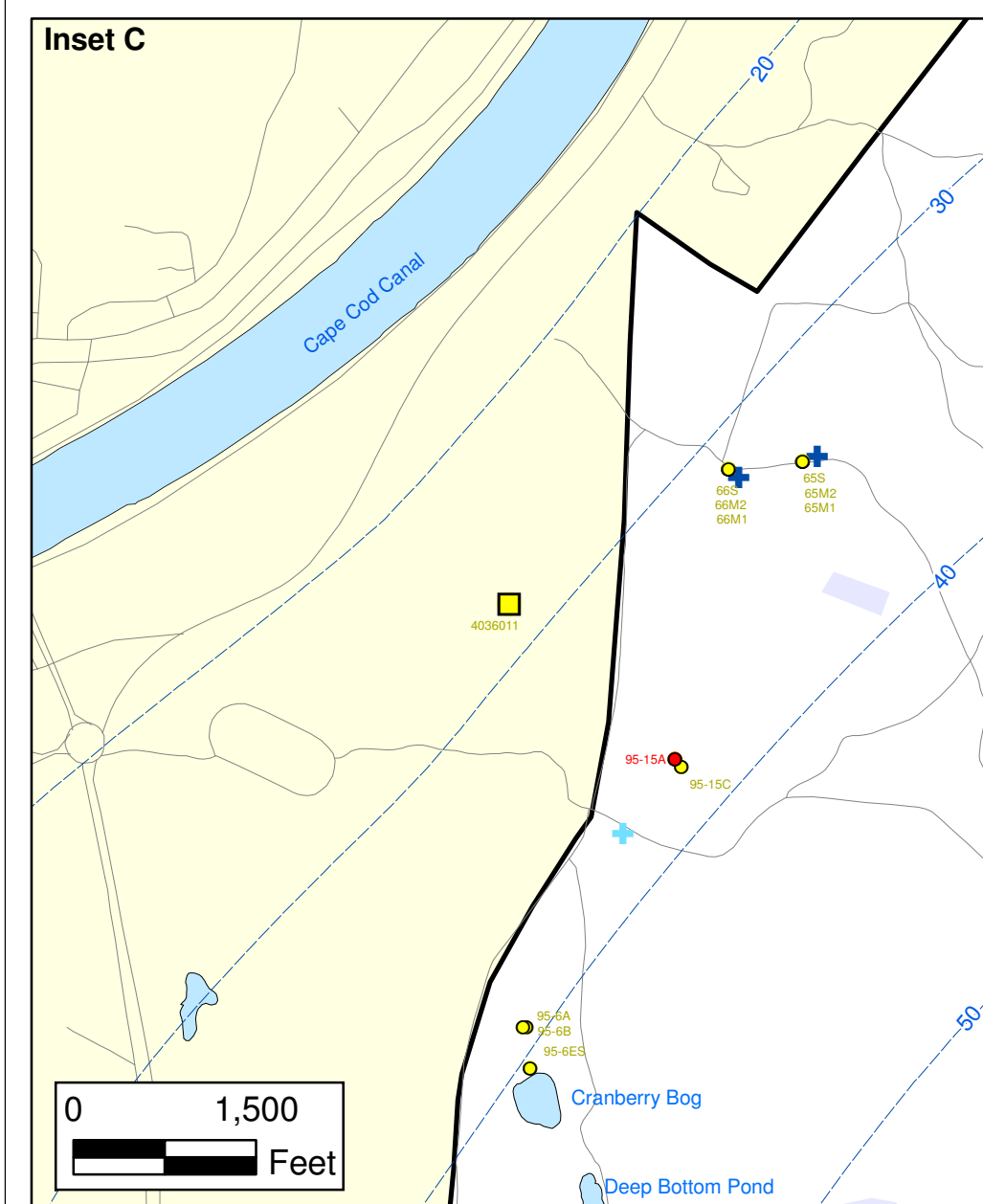
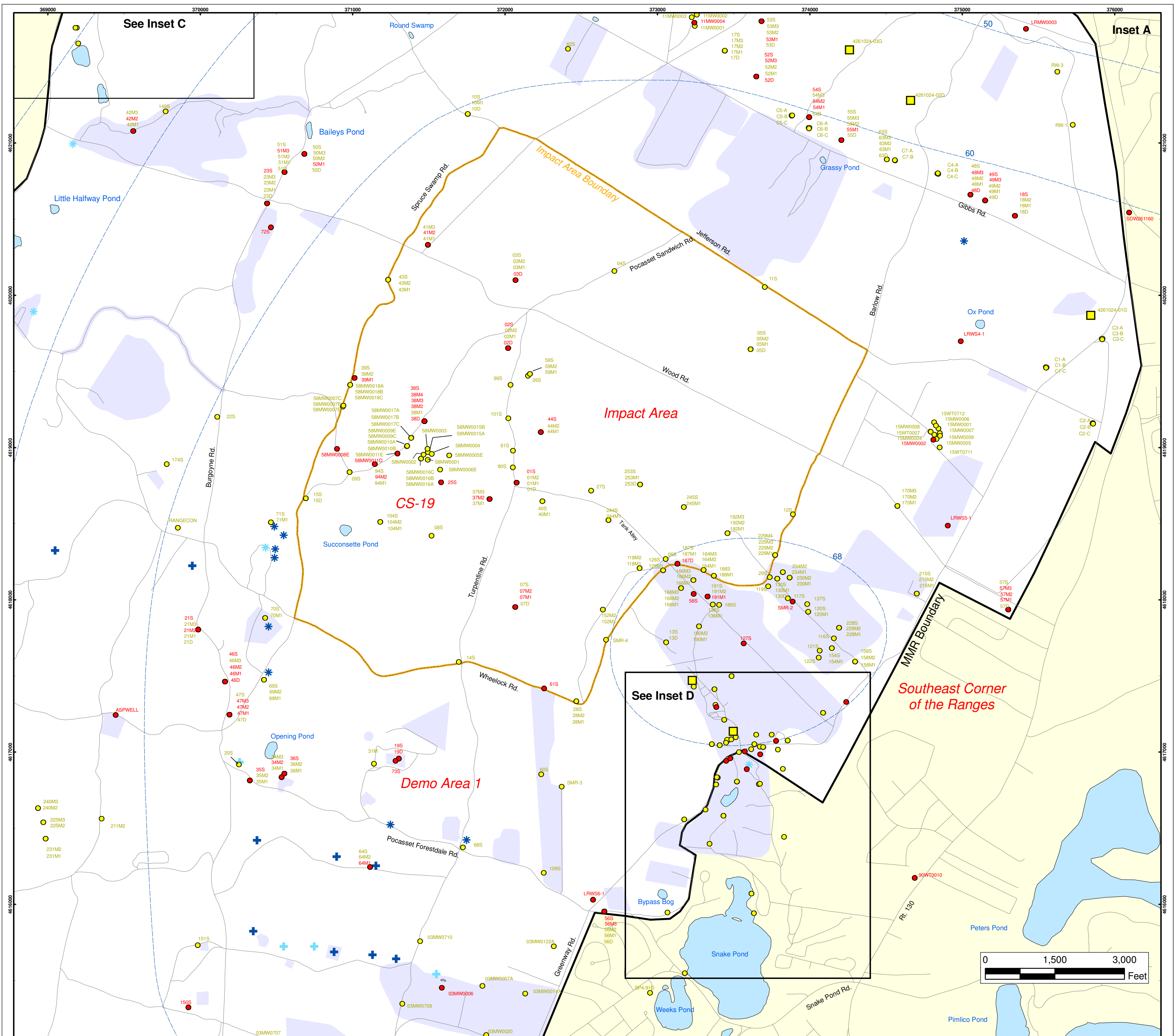
FIGURE  
**Inset Map B** 1



**Metals in Groundwater Compared to Maximum Contaminant Level/Health Advisories Validated Data as of 12/22/05**

FIGURE

2



### Metals in Groundwater Compared to Maximum Contaminant Level/Health Advisories Validated Data as of 12/22/05

- Validated Detection Greater than or Equal to Maximum Contaminant Level/Health Advisories
- Validated Detection Less than Maximum Contaminant Level/Health Advisories
- Military Range Areas
- + Current Gun Position
- \* Current Mortar Position
- + Old Gun Position
- \* Old Mortar Position
- Validated Detection Less than Maximum Contaminant Level/Health Advisories Water Supply Well
- Water Table Contour (Feet NGVD), AMEC, September 2003

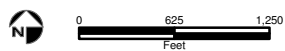
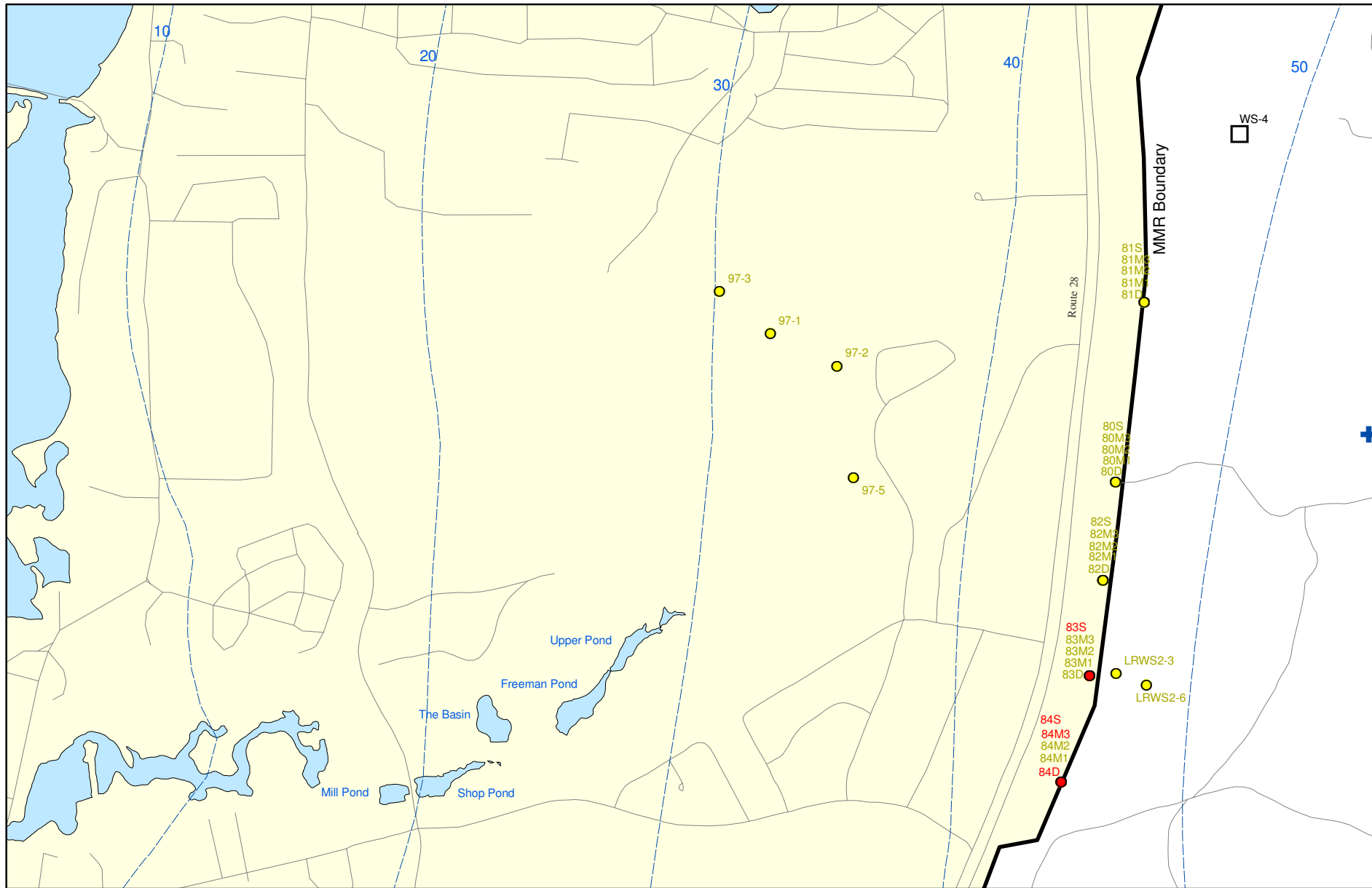
**Impact Area Groundwater Study Program**

Sources & Notes  
 Base map data from US Geological Survey  
 7 1/2 minute Topographic Maps  
 Source: Office of Geographic and Environmental Information (MassGIS)  
 Commonwealth of Massachusetts  
 Executive Office of Environmental Affairs

AMEC Earth & Environmental, Inc.  
Westford, Massachusetts

**FIGURE 2**

**Inset Map**



Sources & Notes:  
 Base map data from US Geological Survey  
 7 1/2 minute Topographic maps.  
 Source: Office of Geographic and  
 Environmental Information (MassGIS)  
 Commonwealth of Massachusetts  
 Executive Office of Environmental Affairs

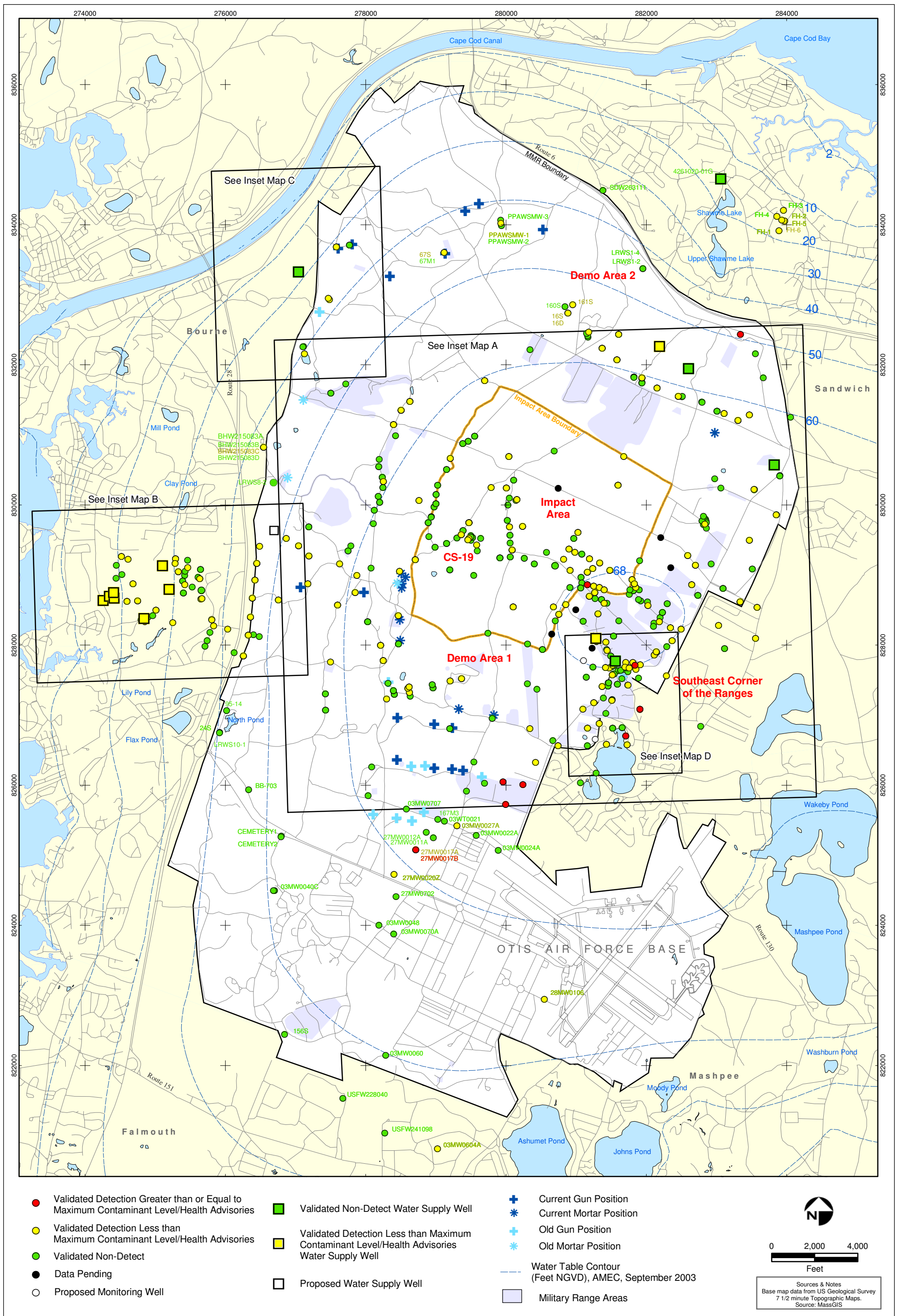
AMEC Earth & Environmental, Inc.  
 Westford, Massachusetts

- Validated Detection Greater than or Equal to Maximum Contaminant Level/Health Advisories
- Validated Detection Less than Maximum Contaminant Level/Health Advisories
- Proposed Water Supply Well
- Water Table Contour (Feet NGVD)  
AMEC, September 2003
- +
- +

**Metals in Groundwater Compared to  
 Maximum Contaminant Level/Health Advisories  
 Validated Data as of 12/22/05**



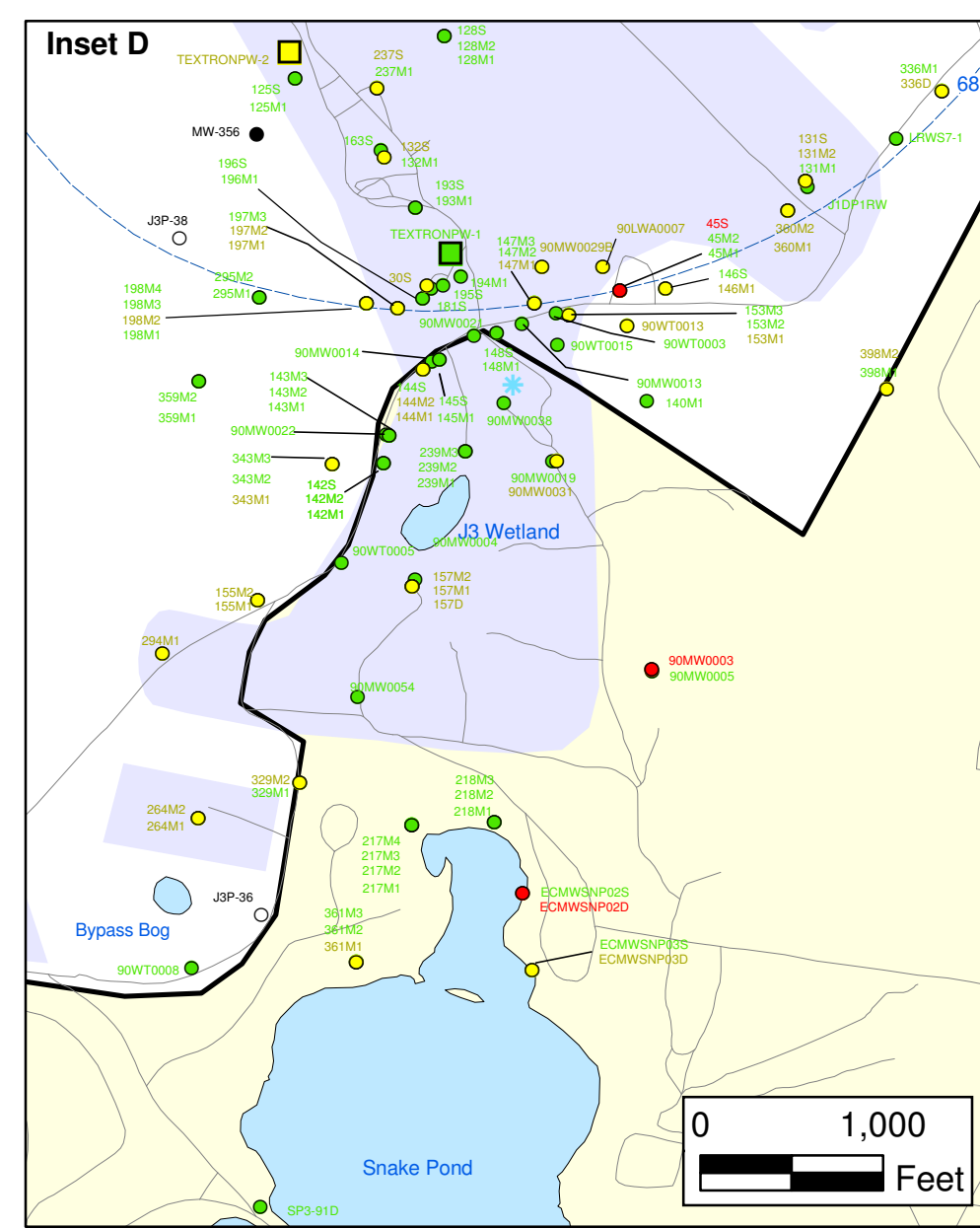
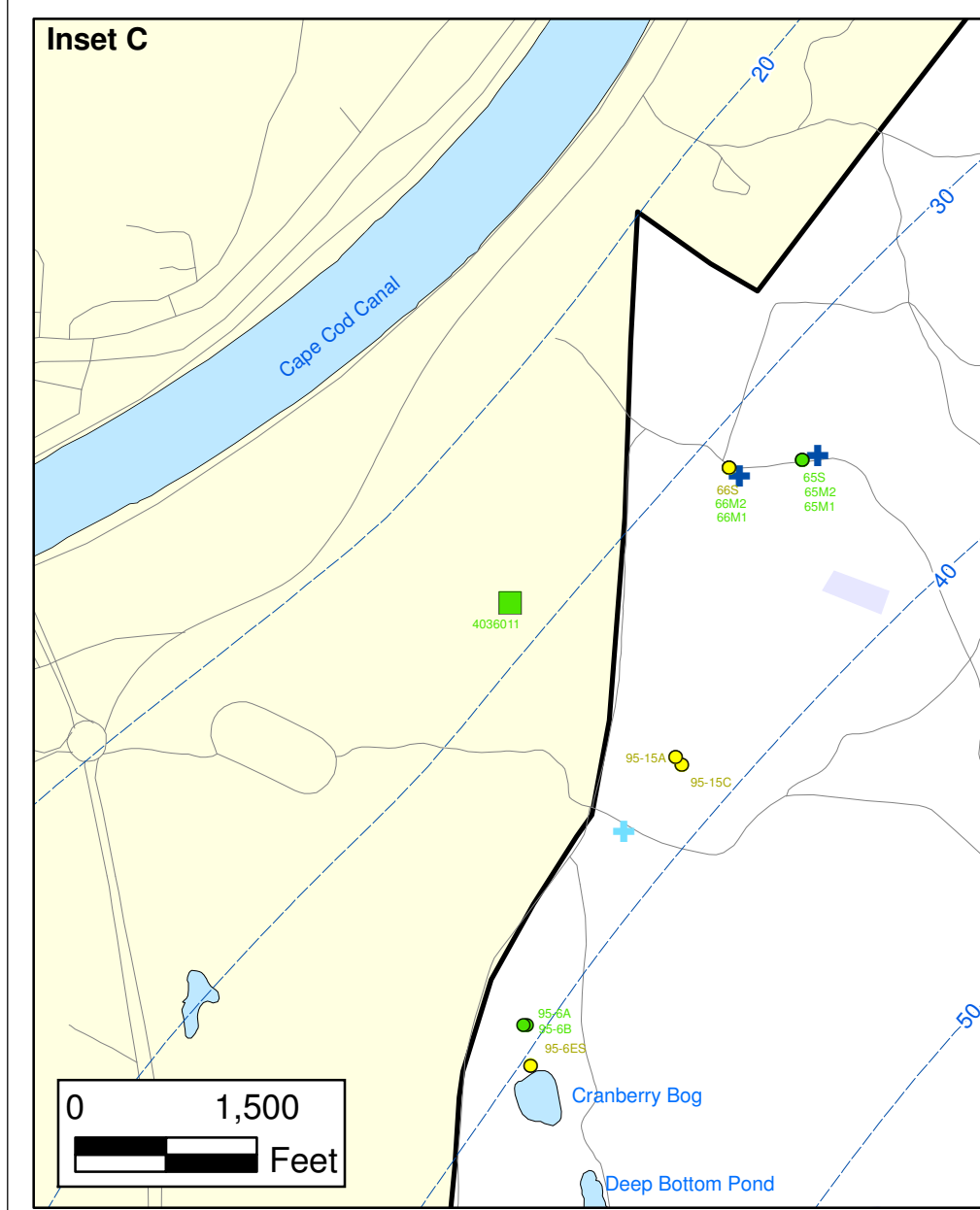
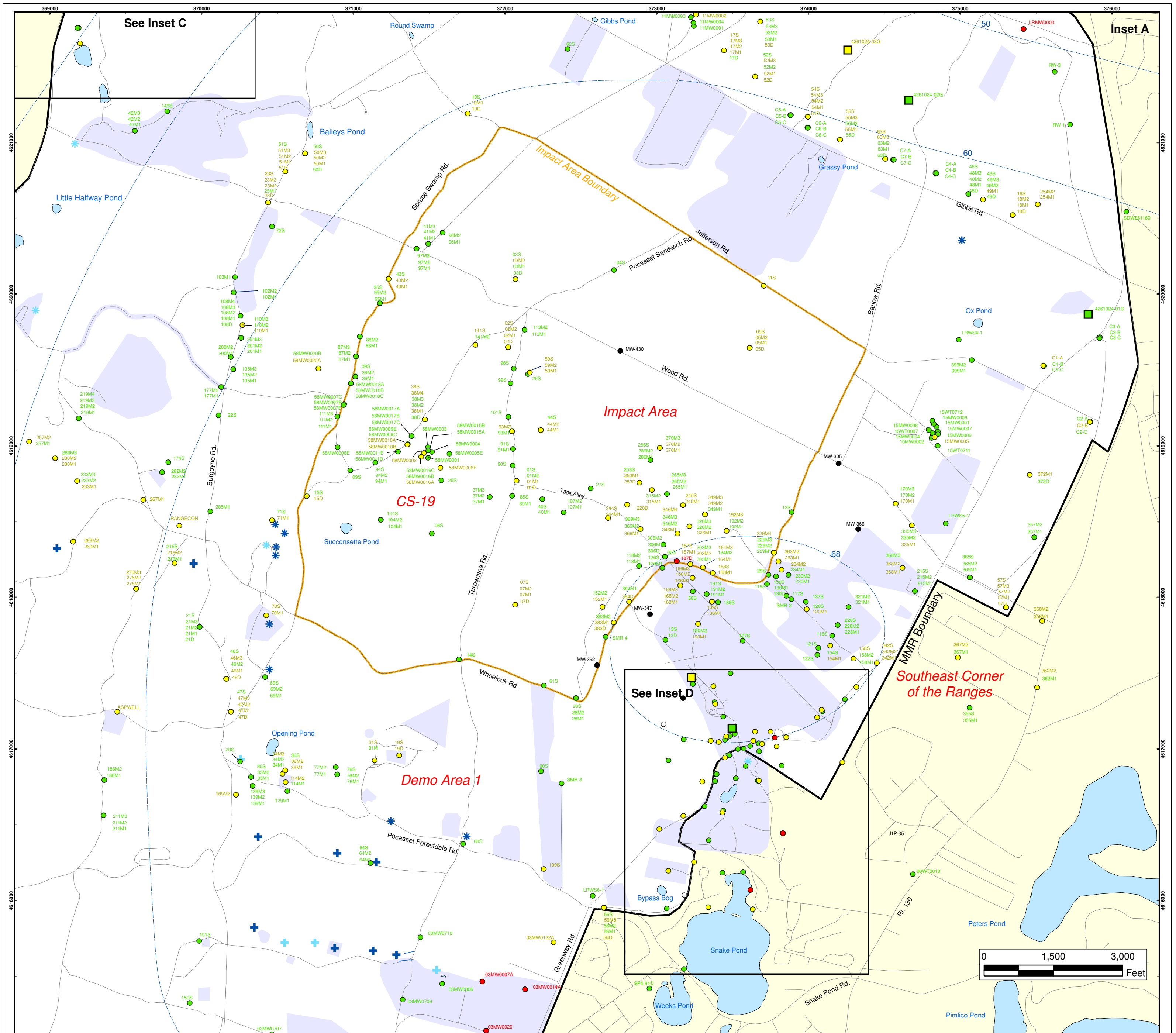
**Inset Map B** 2 **FIGURE**



**Volatile Organic Compounds (Excluding Chloroform) in Groundwater  
Compared to Maximum Contaminant Level/Health Advisories  
Validated Data as of 12/22/05**

FIGURE  
**3**





**Volatile Organic Compounds (Excluding Chloroform) in Groundwater Compared to Maximum Contaminant Level/Health Advisories Validated Data as of 12/22/05**

- Validated Detection Greater than or Equal to Maximum Contaminant Level/Health Advisories
- Validated Detection Less than Maximum Contaminant Level/Health Advisories
- Validated Non-Detect
- Data Pending
- Proposed Monitoring Well
- Military Range Areas
- + Current Gun Position
- \* Current Mortar Position
- + Old Gun Position
- \* Old Mortar Position
- Validated Non-Detect Water Supply Well
- Validated Detection Less than Maximum Contaminant Level/Health Advisories Water Supply Well
- Water Table Contour (Feet NGVD), AMEC, September 2003

**Impact Area Groundwater Study Program**

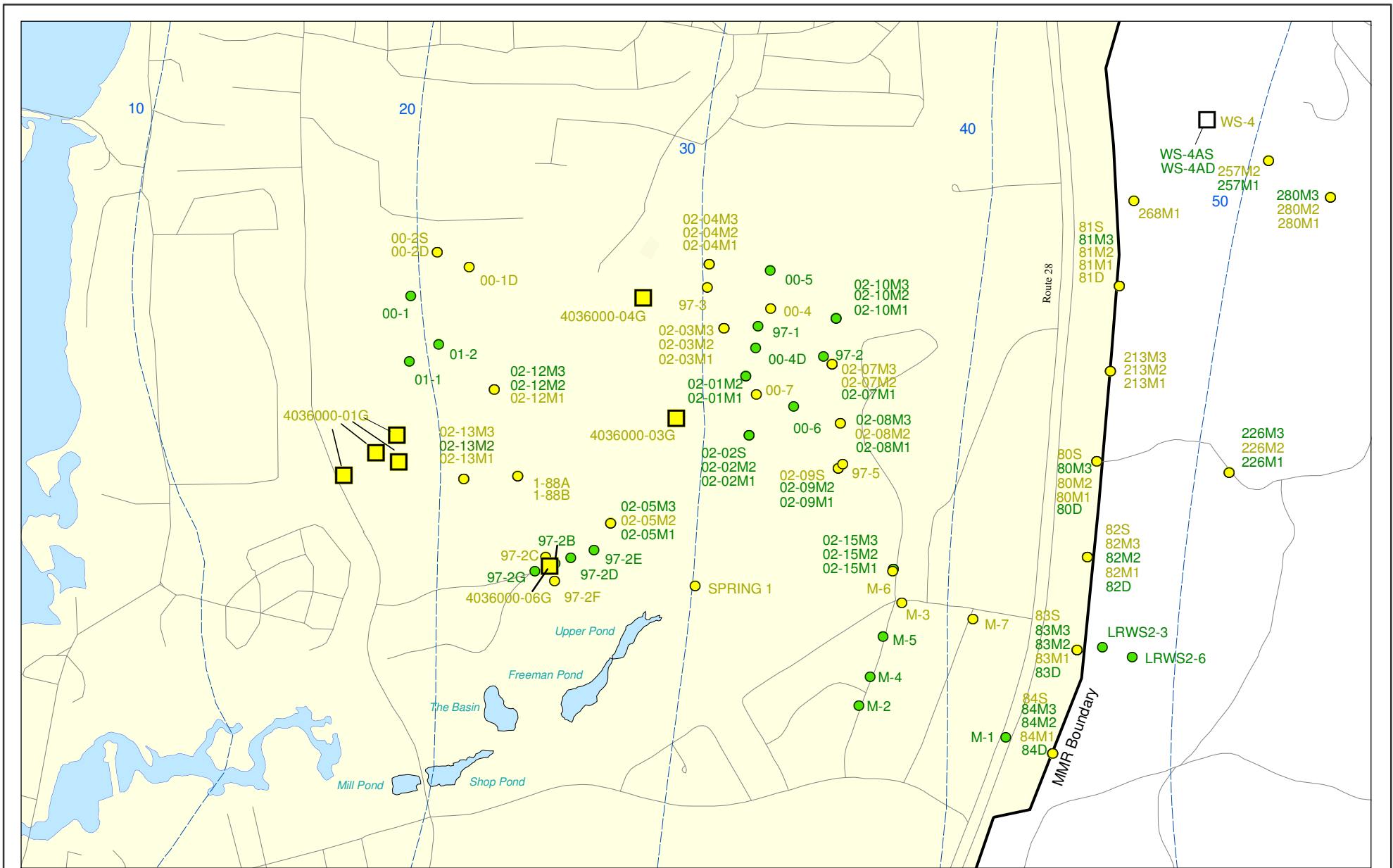
AMEC Earth & Environmental, Inc.  
Westford, Massachusetts

Sources & Notes  
Base map data from US Geological Survey  
7.5 minute Topographic Maps  
Source: Office of Geographic and  
Environmental Information (MassGIS)  
Commonwealth of Massachusetts  
Executive Office of Environmental Affairs

FIGURE  
**3**

**Inset Map**





Sources & Notes:  
 Base map data from US Geological Survey  
 7 1/2 minute Topographic maps.  
 Source: Office of Geographic and  
 Environmental Information (MassGIS)  
 Commonwealth of Massachusetts  
 Executive Office of Environmental Affairs

- Validated Detection Less than Maximum Contaminant Level/Health Advisories
- Validated Non-Detect

- Validated Detection Less than Maximum Contaminant Level/Health Advisories Water Supply Well
- Proposed Water Supply Well

--- Water Table Contour (Feet NGVD), AMEC, September 2003

**Volatile Organic Compounds (Excluding Chloroform)  
 in Groundwater Compared to Maximum  
 Contaminant Level/Health Advisories**  
 Validated Data as of 12/22/05



Impact Area  
 Groundwater Study Program