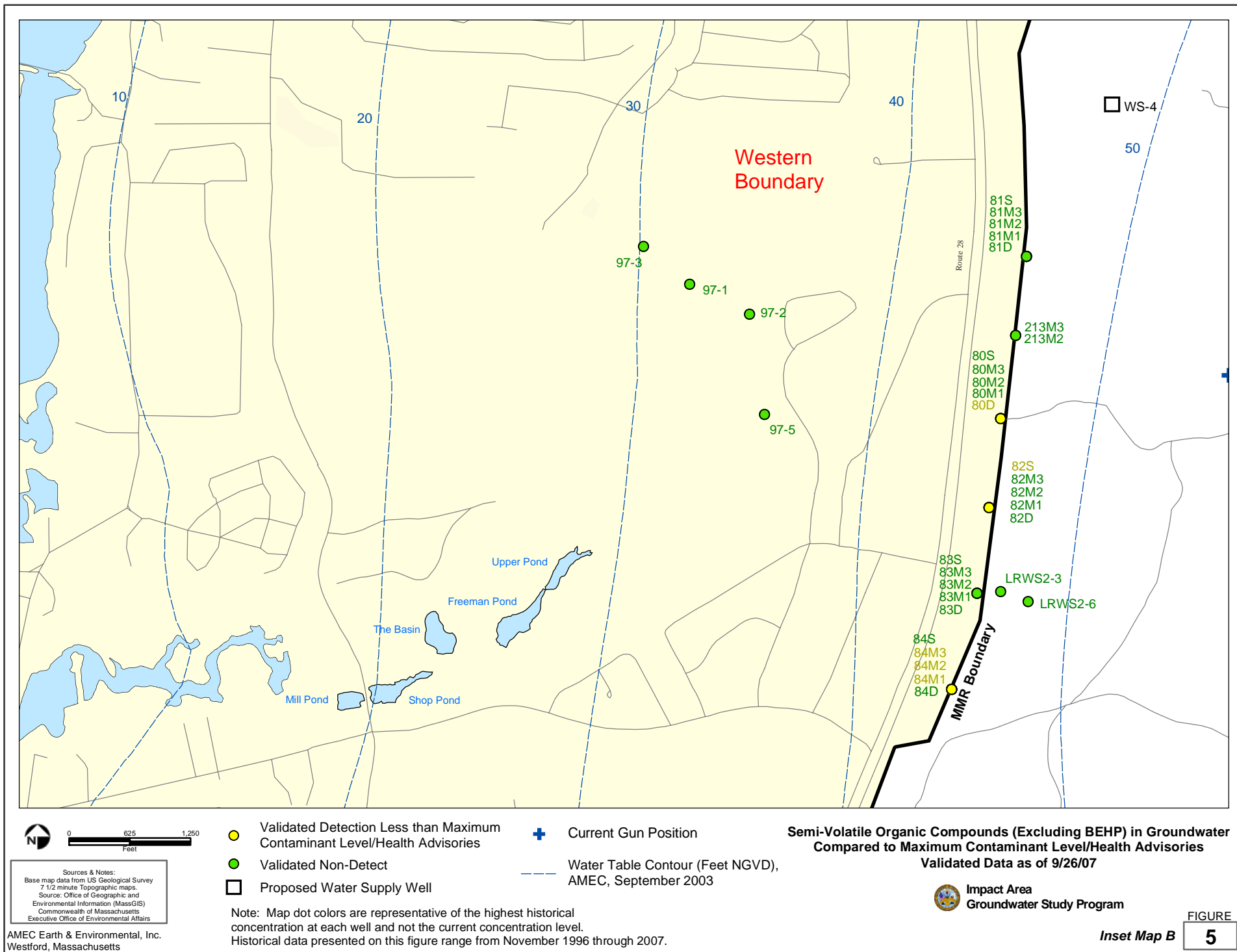


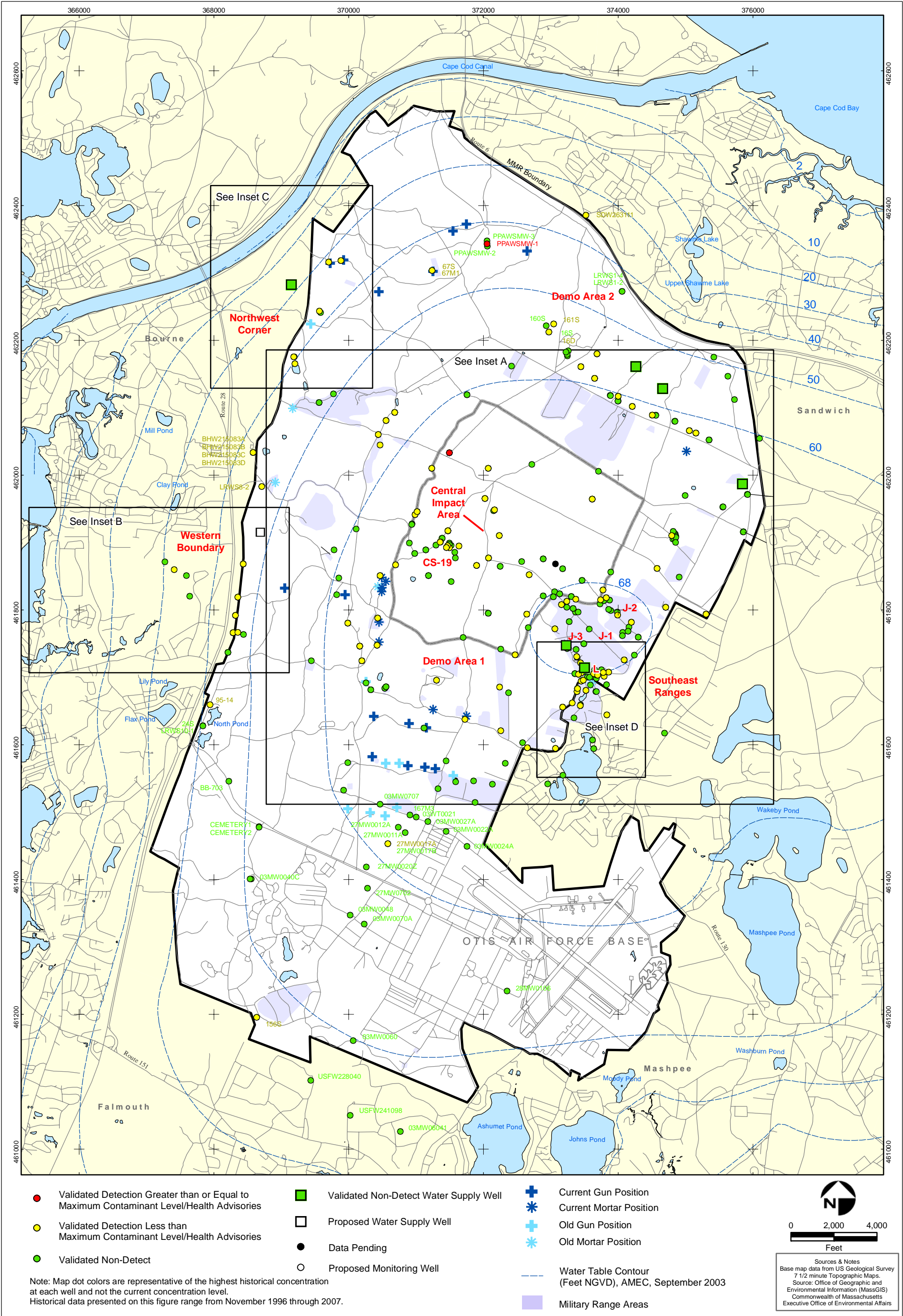
**Semi-Volatile Organic Compounds (Excluding BEHP) in Groundwater  
Compared to Maximum Contaminant Level/Health Advisories  
Validated Data as of 9/26/07**

AMEC Earth & Environmental, Inc.  
Westford, Massachusetts

FIGURE  
**5**





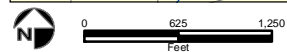
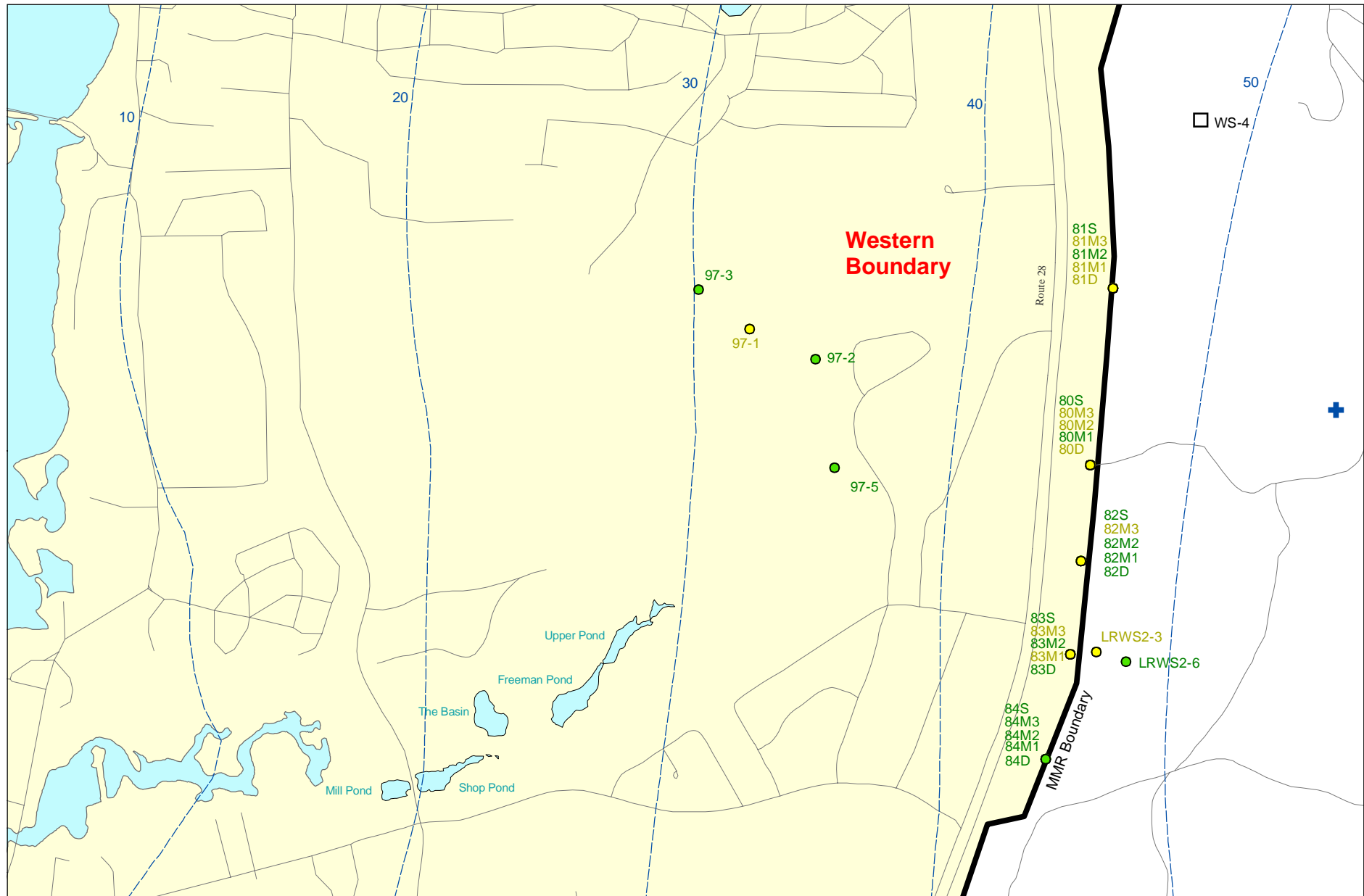


**Herbicides & Pesticides in Groundwater Compared to Maximum Contaminant Level/Health Advisories**  
**Validated Data as of 9/26/07**

AMEC Earth & Environmental, Inc.  
Westford, Massachusetts

FIGURE  
**7**





Sources & Notes:  
Base map data from US Geological Survey  
7 1/2 minute Topographic maps.  
Source: Office of Geographic and  
Environmental Information (MassGIS)  
Commonwealth of Massachusetts  
Executive Office of Environmental Affairs

AMEC Earth & Environmental, Inc.  
Westford, Massachusetts

- Validated Detection Less than Maximum Contaminant Level/Health Advisories
- Validated Non-Detect
- Proposed Water Supply Well

- ⊕ Current Gun Position
- Water Table Contour (Feet NGVD), AMEC, September 2003

Note: Map dot colors are representative of the highest historical concentration at each well and not the current concentration level.  
Historical data presented on this figure range from November 1996 through 2007.

### Herbicides & Pesticides in Groundwater Compared to Maximum Contaminant Level/Health Advisories Validated Data as of 9/26/07



Impact Area  
Groundwater Study Program

Inset Map B

FIGURE

7