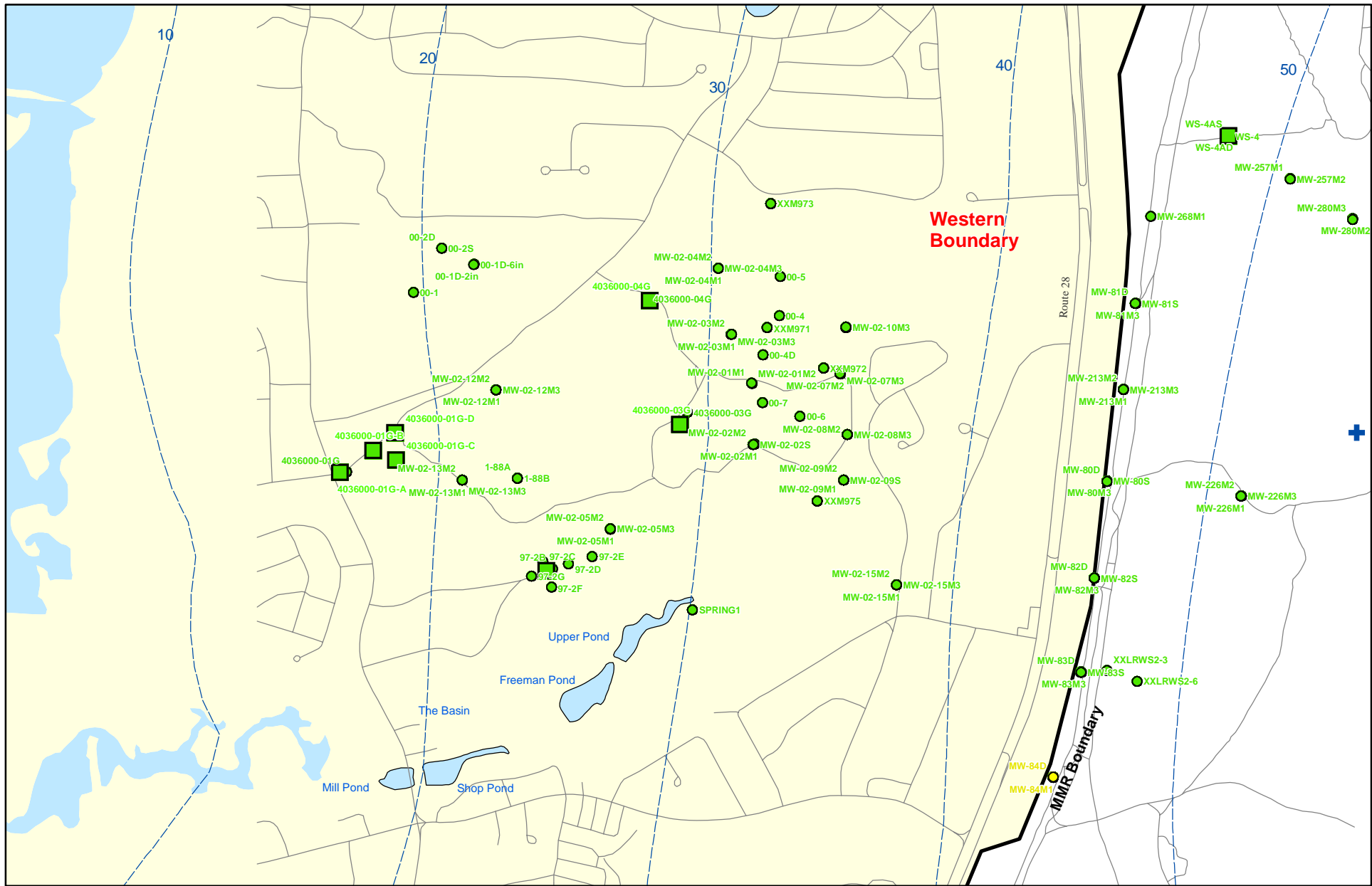


**Explosives in Groundwater Compared to Maximum Contaminant Level/Health Advisories Validated Data as of 12/31/08**



Sources & Notes:  
 Base map data from US Geological Survey  
 7 1/2 minute Topographic maps  
 Source: Office of Geographic and  
 Environmental Information (MassGIS)  
 Commonwealth of Massachusetts  
 Executive Office of Environmental Affairs

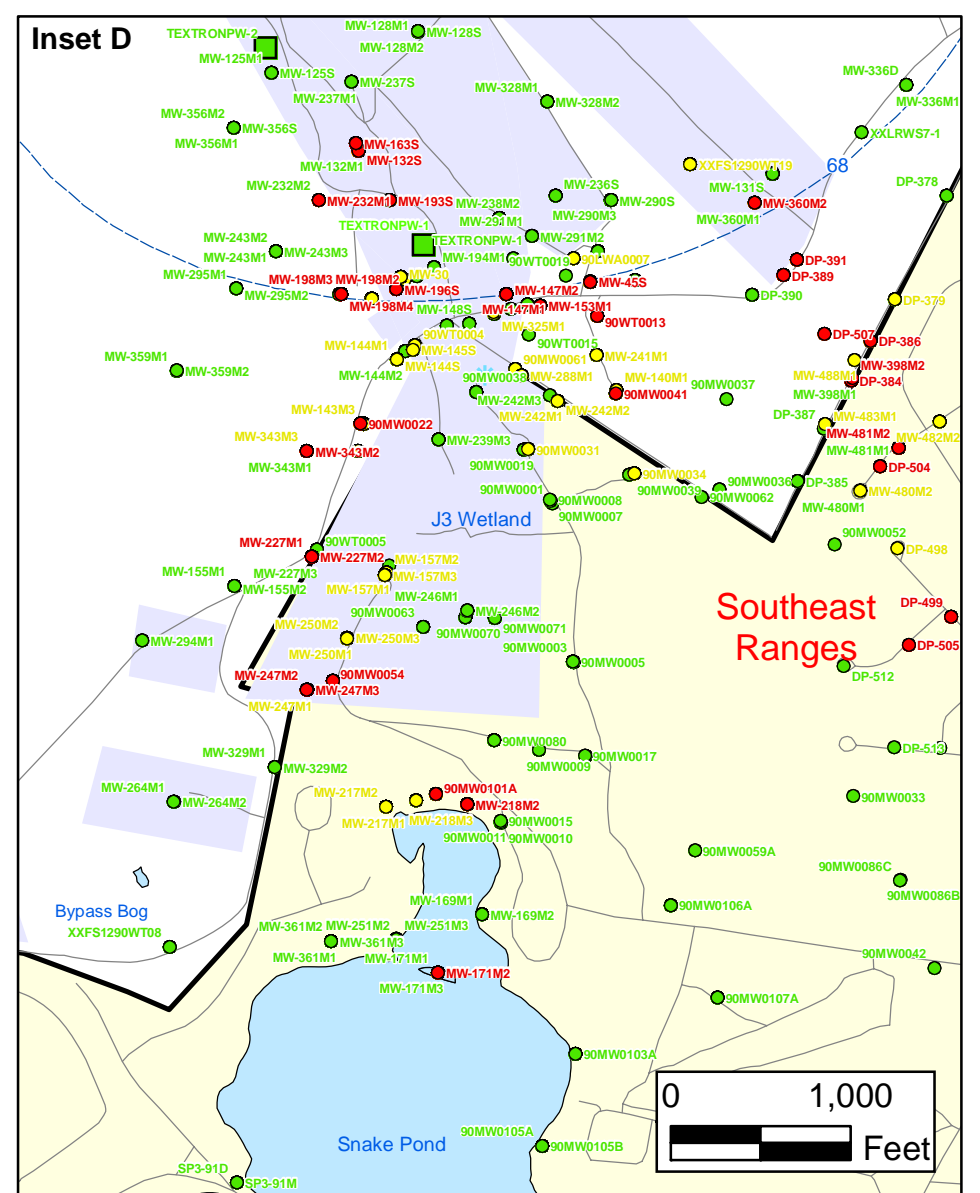
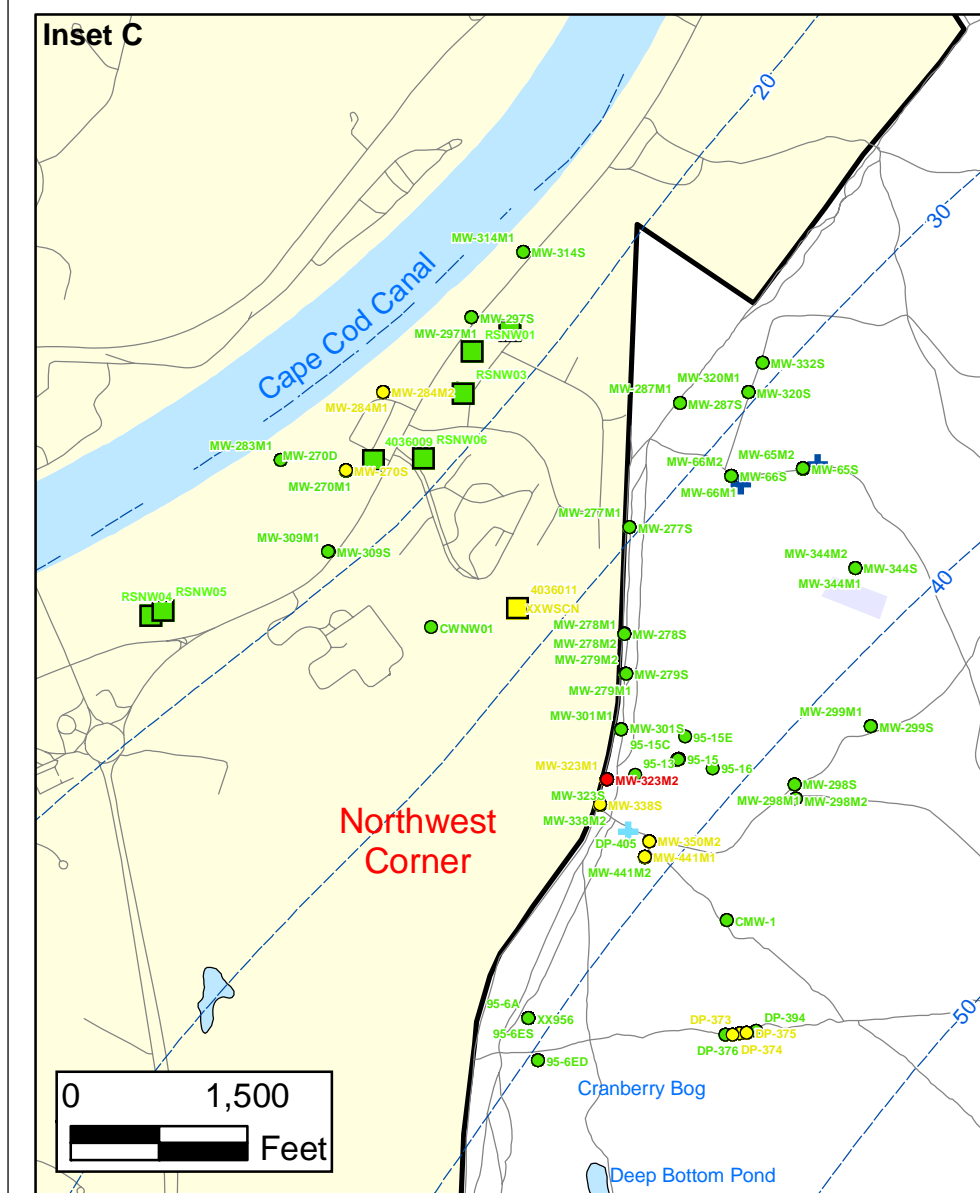
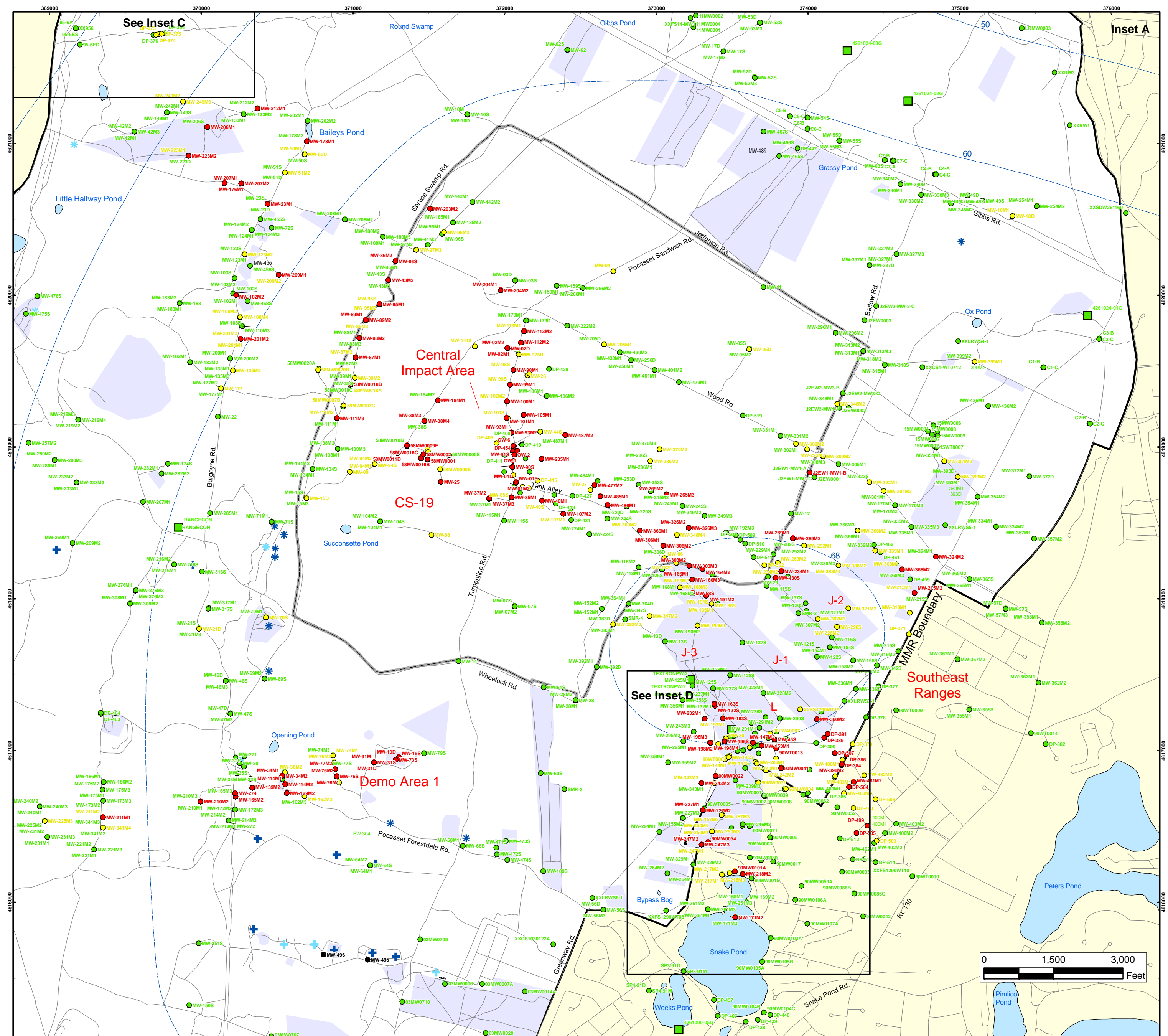
- Validated Detection Less than Maximum Contaminant Level/Health Advisories
- Validated Non-Detect
- + Current Gun Position
- Validated Non-Detect Water Supply Well
- Proposed Water Supply Well
- Water Table Contour (Feet NGVD)  
AMEC, September 2003

**Explosives in Groundwater Compared to Maximum Contaminant Level/Health Advisories**  
**Validated Data as of 12/31/08**

**Impact Area Groundwater Study Program**

Note: Map dot colors are representative of the highest historical concentration at each well and not the current concentration level. Historical data presented on this figure range from November 1996 through 2007.

ECC-MMR  
 Cape Cod, Massachusetts



### Explosives in Groundwater Compared to Maximum Contaminant Level/Health Advisories

Validated Data as of 12/31/08

- Validated Detection Greater than or Equal to Maximum Contaminant Level/Health Advisories
- Validated Detection Less than Maximum Contaminant Level/Health Advisories
- Validated Non-Detect
- Data Pending
- Military Range Areas
- + Current Gun Position
- \* Current Mortar Position
- + Old Gun Position
- \* Old Mortar Position
- Validated Non-Detect Water Supply Well
- Validated Detection Less than Maximum Contaminant Level/Health Advisories Water Supply Well
- Water Table Contour (Feet NGVD), AMEC, September 2003

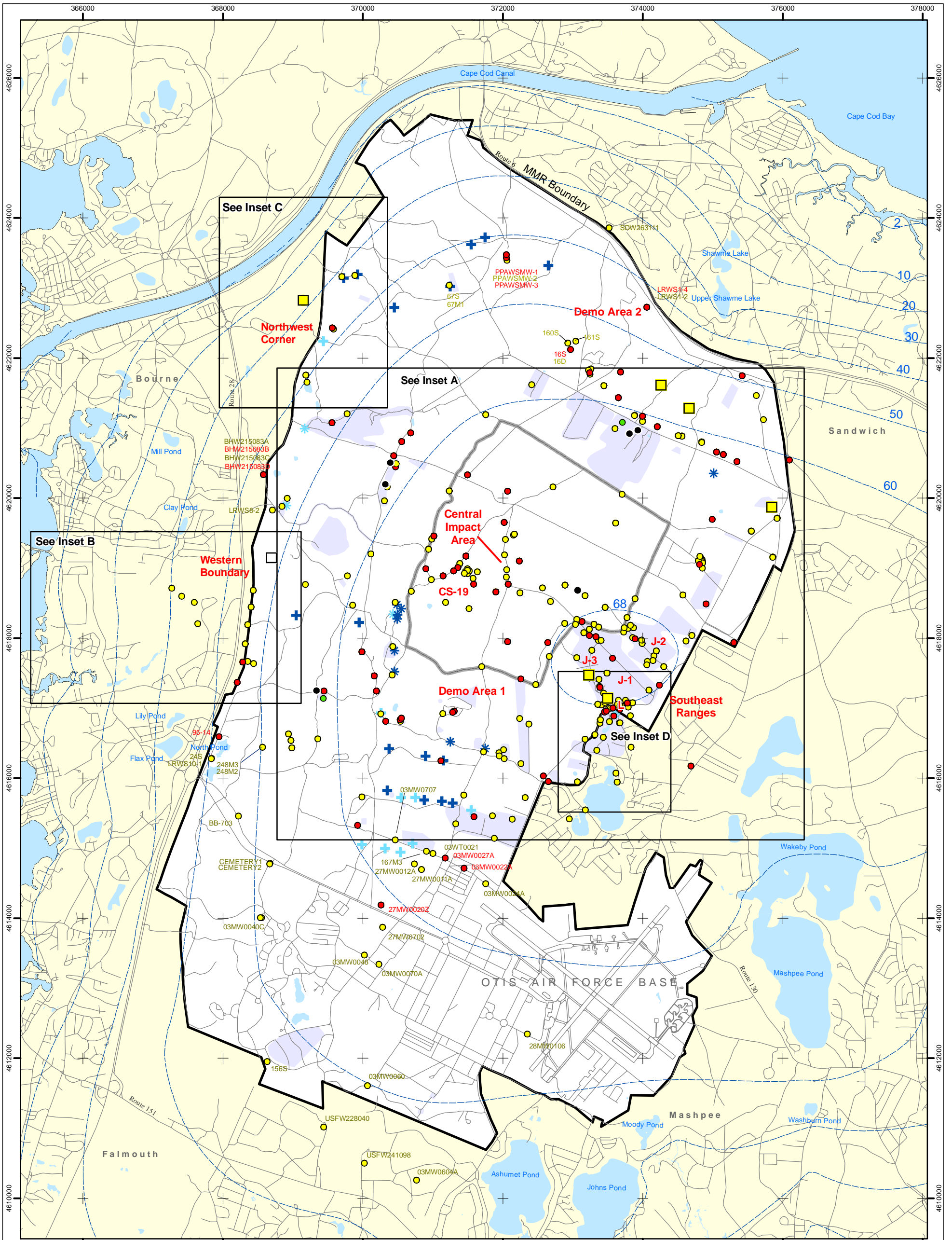
Note: Map dot colors are representative of the highest historical concentration at each well and not the current concentration level. Historical data presented on this figure range from November 1996 through 2007.

**Impact Area  
Groundwater Study Program**


ECC-MMR  
Cape Cod, Massachusetts

Sources & Notes  
Base map data from US Geological Survey  
7 1/2 minute Topographic Maps  
Source: Office of Geographic and  
Environmental Information (MassGIS)  
Environmental Information (MassGIS)  
Executive Office of Environmental Affairs

**FIGURE  
1**



- |  |                           |   |
|--|---------------------------|---|
| ● Validated Detection Greater than or Equal to Maximum Contaminant Level/Health Advisories | ⊕ Current Gun Position    | ● Data Pending  |
| ● Validated Detection Less than Maximum Contaminant Level/Health Advisories                | * Current Mortar Position | ○ Proposed Monitoring Well  |
| ● Validated Non-Detect   | ⊕ Old Gun Position        | ■ Validated Detection Less than Maximum Contaminant Level/Health Advisories Water Supply Well |
|  | * Old Mortar Position     | □ Proposed Water Supply Well  |
|  | ■ Military Range Areas    |   |
|  |                           | --- Water Table Contour (Feet above NGVD), AMEC, September 2003                               |

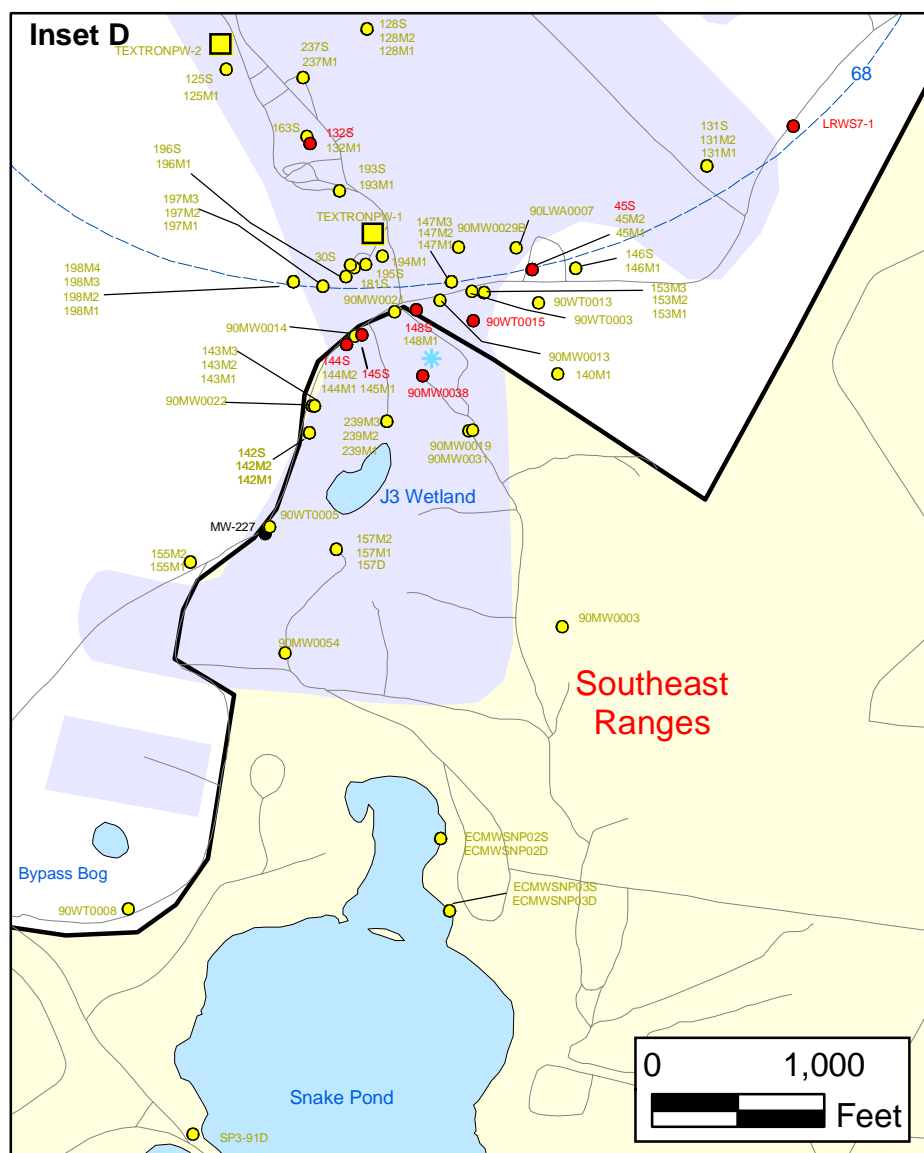
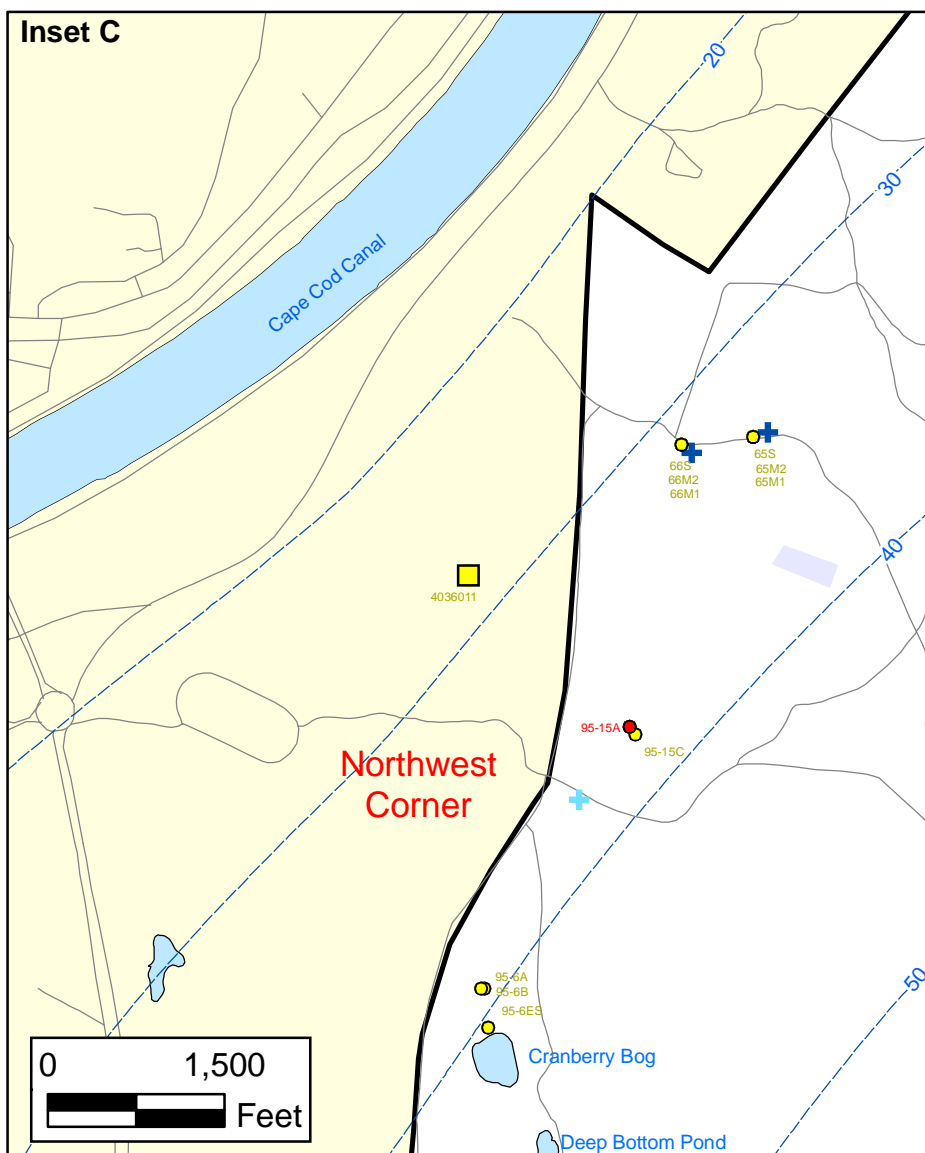
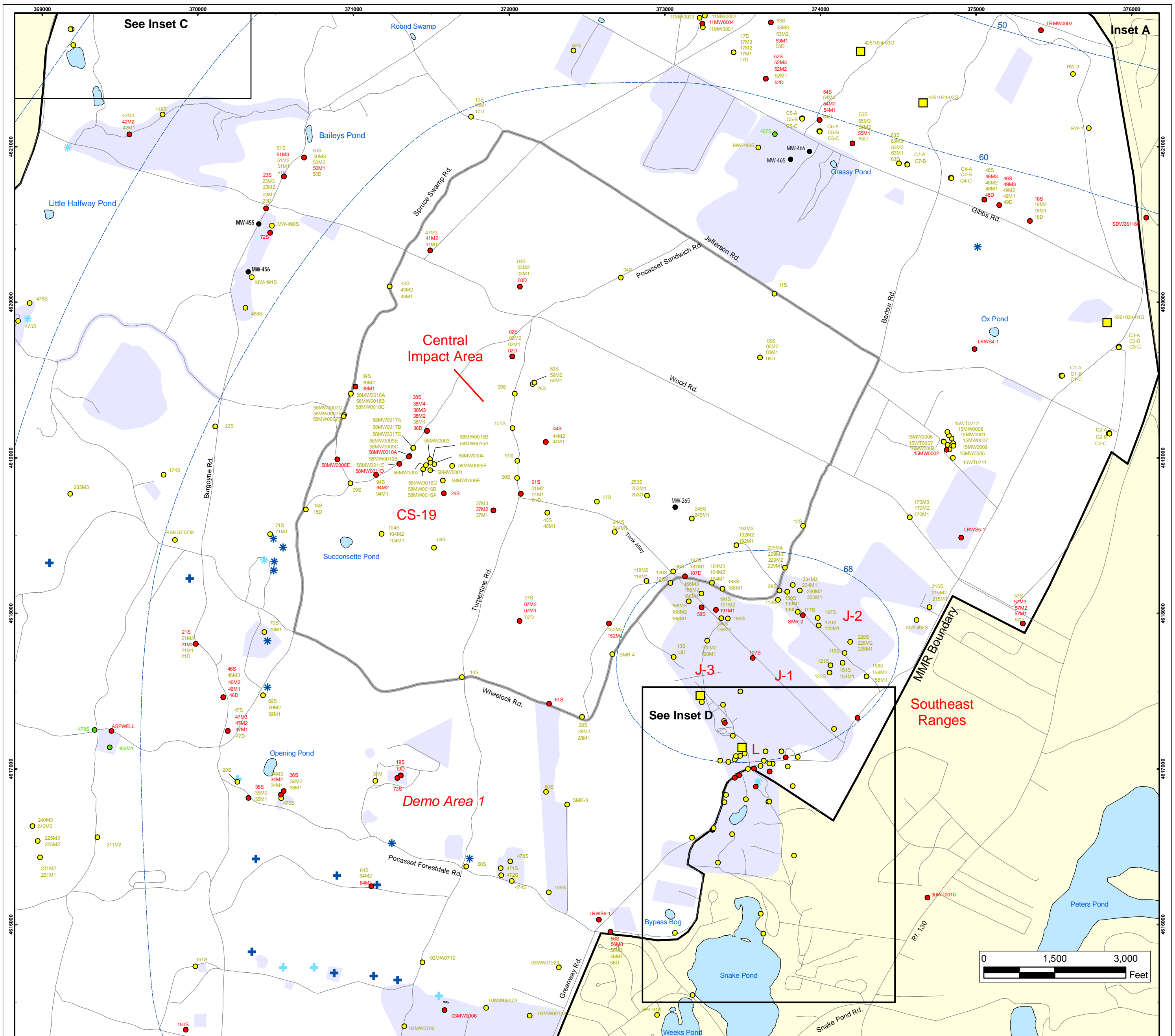
  
 0 2,000 4,000  
 Feet

Sources & Notes  
 Base map data from US Geological Survey  
 7 1/2 minute Topographic Maps  
 Source: Office of Geographic and Environmental Information (MassGIS)  
 Commonwealth of Massachusetts  
 Executive Office of Environmental Affairs

Note: Map dot colors are representative of the highest historical concentration at each well and not the current concentration level. Historical data presented on this figure range from November 1996 through 2007.

**Metals in Groundwater Compared to Maximum Contaminant Level/Health Advisories Validated Data as of 03/31/08**

AMEC Earth & Environmental, Inc.  
Westford, Massachusetts



### Metals in Groundwater Compared to Maximum Contaminant Level/Health Advisories

**Validated Data as of 03/31/08**

- Validated Detection Greater than or Equal to Maximum Contaminant Level/Health Advisories
- Validated Detection Less than Maximum Contaminant Level/Health Advisories
- Validated Non-Detect
- Data Pending
- Proposed Monitoring Well
- Military Range Areas
- + Current Gun Position
- \* Current Mortar Position
- + Old Gun Position
- \* Old Mortar Position
- Validated Detection Less than Maximum Contaminant Level/Health Advisories Water Supply Well
- Water Table Contour (Feet NGVD), AMEC, September 2003

Note: Map dot colors are representative of the highest historical concentration at each well and not the current concentration level. Historical data presented on this figure range from November 1996 through 2007.

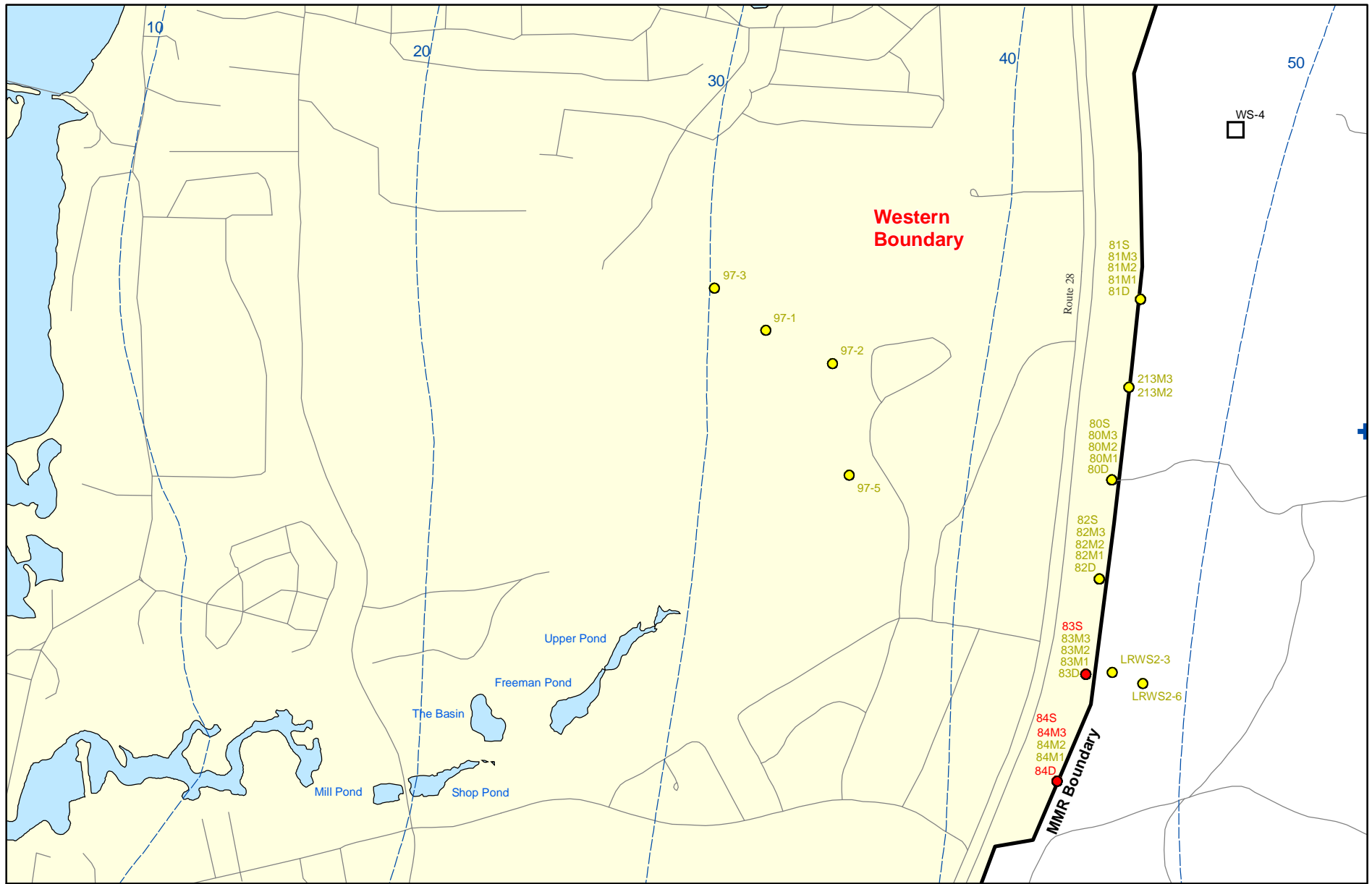
**Impact Area Groundwater Study Program**

Sources & Notes  
Base map data from US Geological Survey  
7 1/2 minute Topographic Maps.  
Source: Office of Geographic and Environmental Information (MassGIS)  
Commonwealth of Massachusetts  
Executive Office of Environmental Affairs

**FIGURE 2**

**Inset Map**

AMEC Earth & Environmental, Inc.  
Westford, Massachusetts



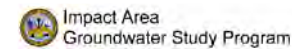
Sources & Notes:  
 Base map data from US Geological Survey  
 7 1/2 minute Topographic maps.  
 Source: Office of Geographic and  
 Environmental Information (MassGIS)  
 Commonwealth of Massachusetts  
 Executive Office of Environmental Affairs

AMEC Earth & Environmental, Inc.  
 Westford, Massachusetts

- Validated Detection Greater than or Equal to Maximum Contaminant Level/Health Advisories
- Validated Detection Less than Maximum Contaminant Level/Health Advisories
- Proposed Water Supply Well
- + Current Gun Position
- Water Table Contour (Feet NGVD) AMEC, September 2003

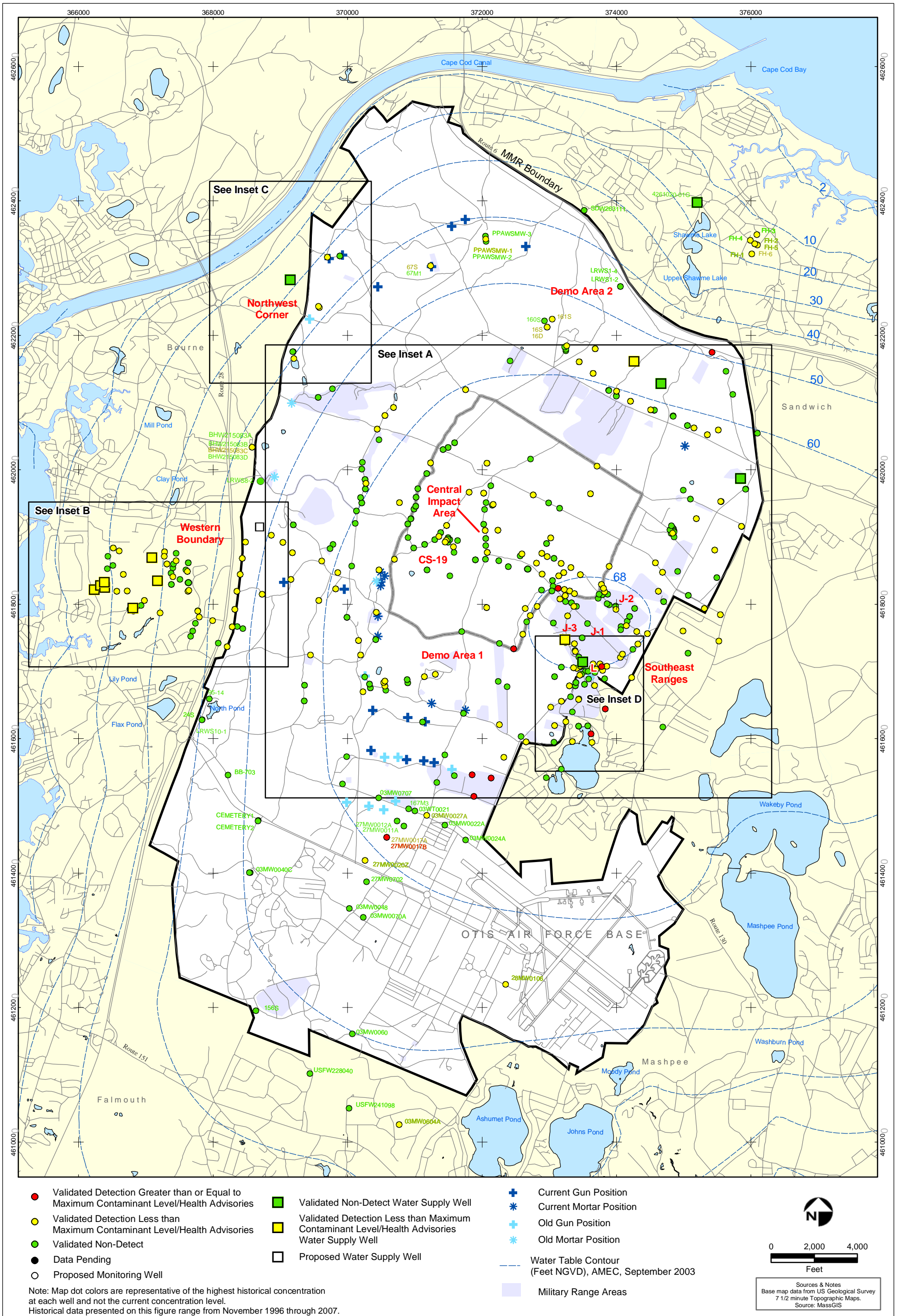
Note: Map dot colors are representative of the highest historical concentration at each well and not the current concentration level.  
 Historical data presented on this figure range from November 1996 through 2007.

### Metals in Groundwater Compared to Maximum Contaminant Level/Health Advisories Validated Data as of 03/31/08



Inset Map B

FIGURE  
**2**

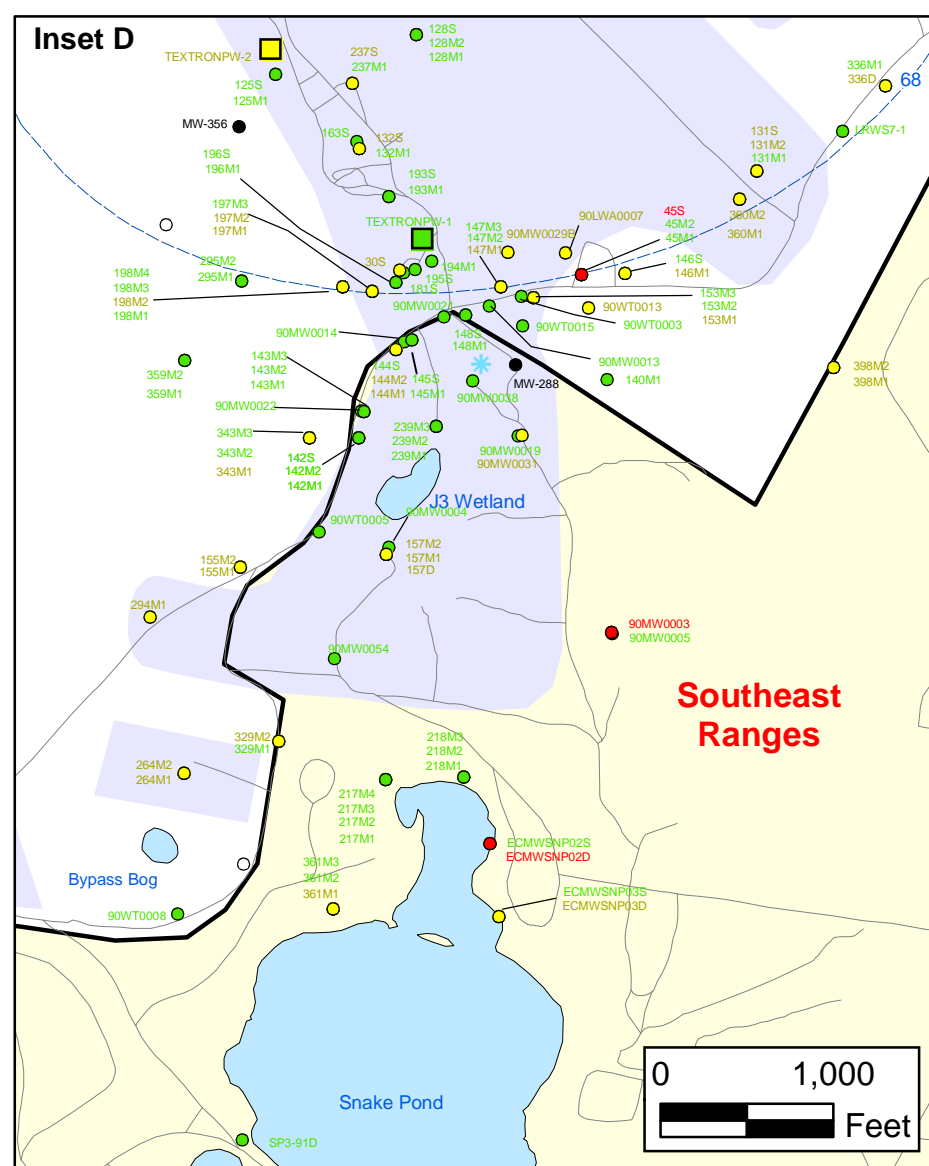
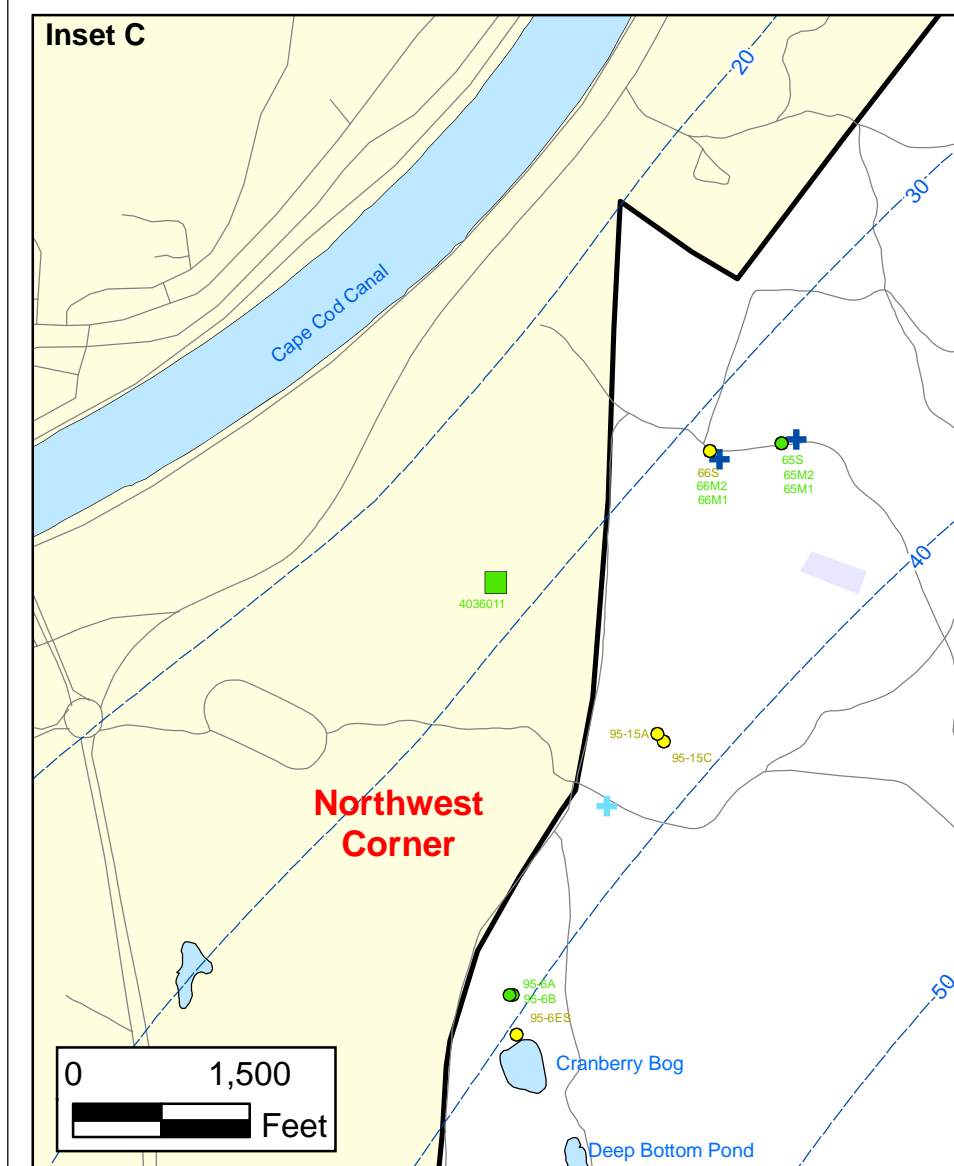
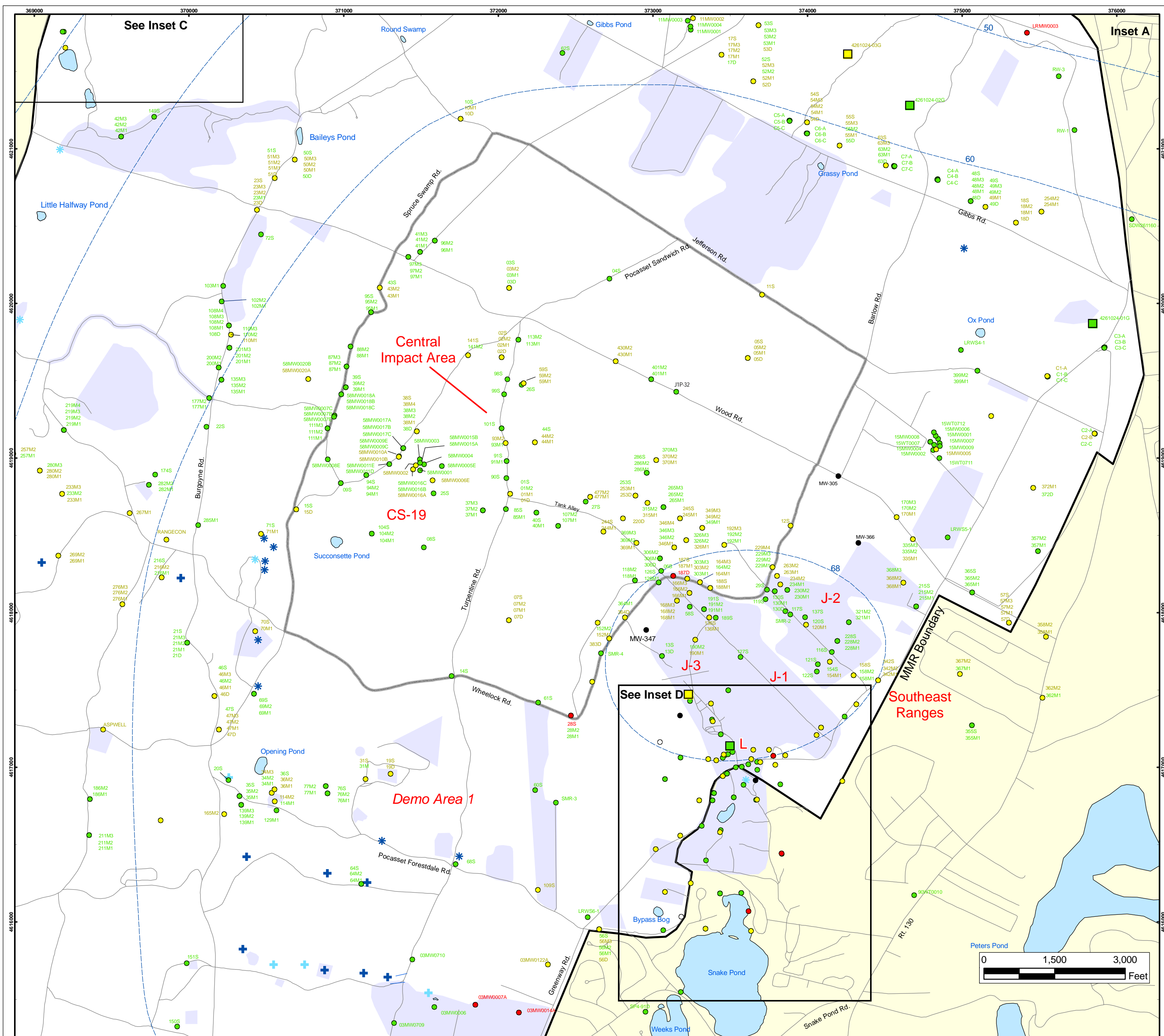


**Volatile Organic Compounds (Excluding Chloroform) in Groundwater  
Compared to Maximum Contaminant Level/Health Advisories  
Validated Data as of 03/31/08**

AMEC Earth & Environmental, Inc.  
Westford, Massachusetts

FIGURE  
**3**





### Volatile Organic Compounds (Excluding Chloroform) in Groundwater Compared to Maximum Contaminant Level/Health Advisories Validated Data as of 03/31/08

- Validated Detection Greater than or Equal to Maximum Contaminant Level/Health Advisories
- Validated Detection Less than Maximum Contaminant Level/Health Advisories
- Validated Non-Detect
- Data Pending
- Proposed Monitoring Well
- Military Range Areas
- + Current Gun Position
- \* Current Mortar Position
- + Old Gun Position
- \* Old Mortar Position
- Validated Non-Detect Water Supply Well
- Validated Detection Less than Maximum Contaminant Level/Health Advisories Water Supply Well
- Water Table Contour (Feet NGVD), AMEC, September 2003

Note: Map dot colors are representative of the highest historical concentration at each well and not the current concentration level. Historical data presented on this figure range from November 1996 through 2007.

AMEC Earth & Environmental, Inc.  
Westford, Massachusetts

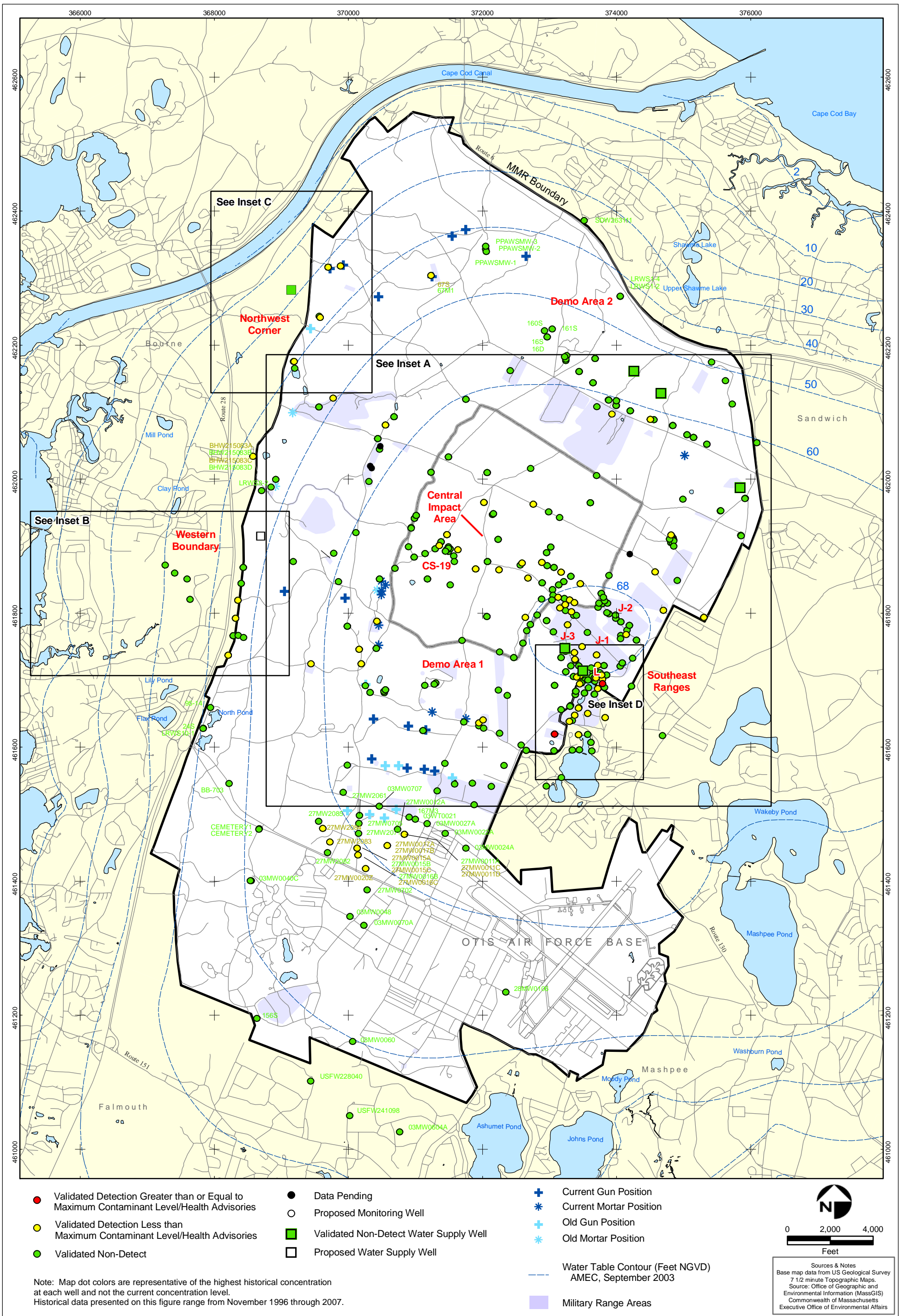
Sources & Notes  
Base map data from US Geological Survey  
7 1/2 minute Topographic Maps  
Source: Office of Geographic and  
Environmental Information (MassGIS)  
Commonwealth of Massachusetts  
Executive Office of Environmental Affairs

FIGURE  
**3**

*Inset Map*



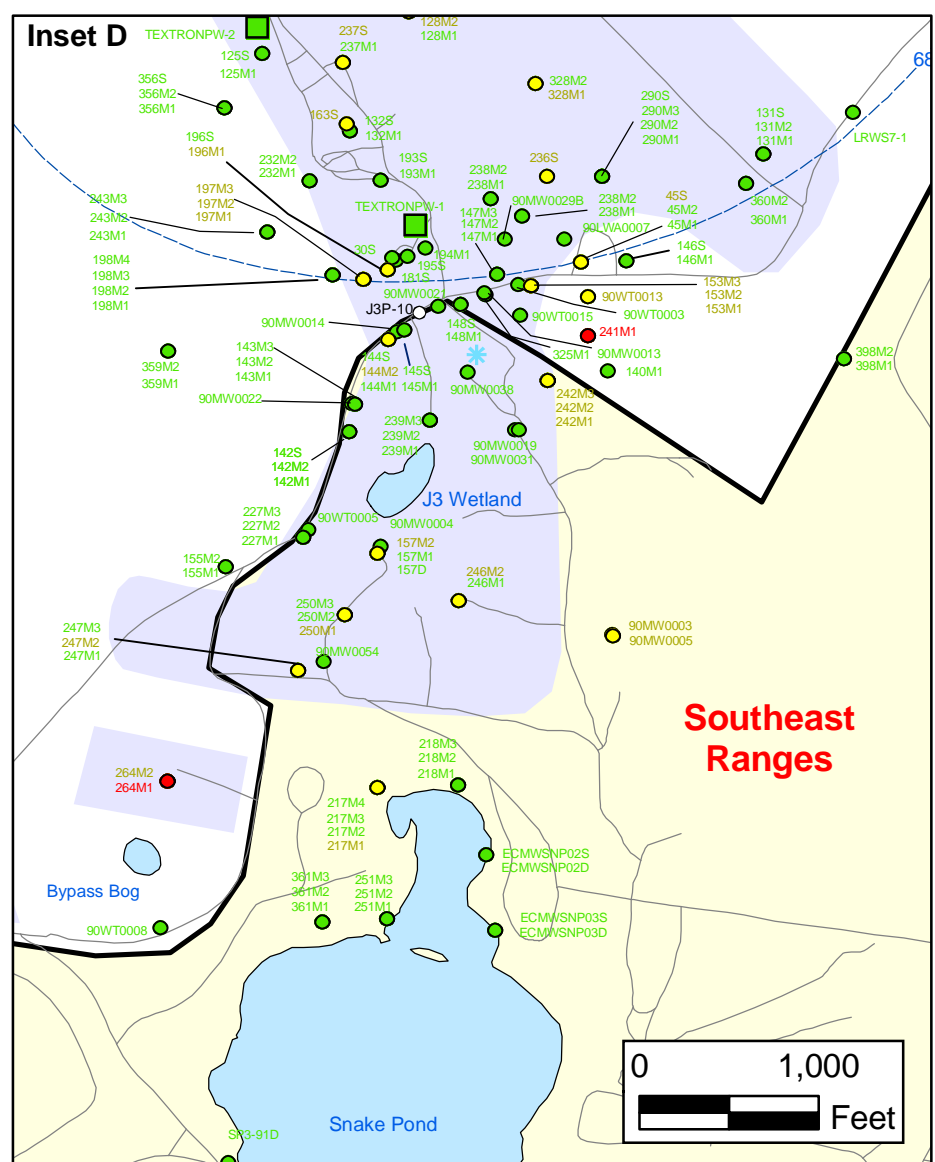
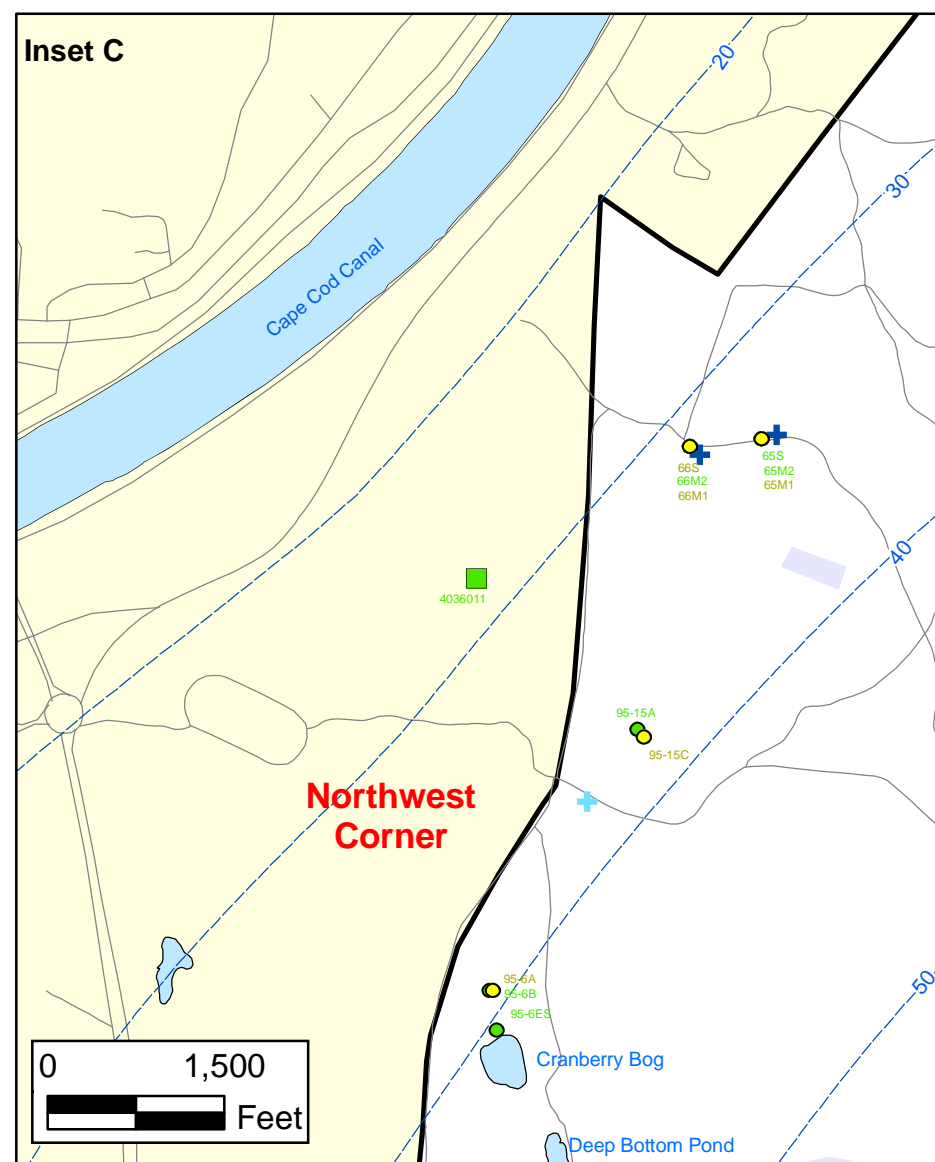
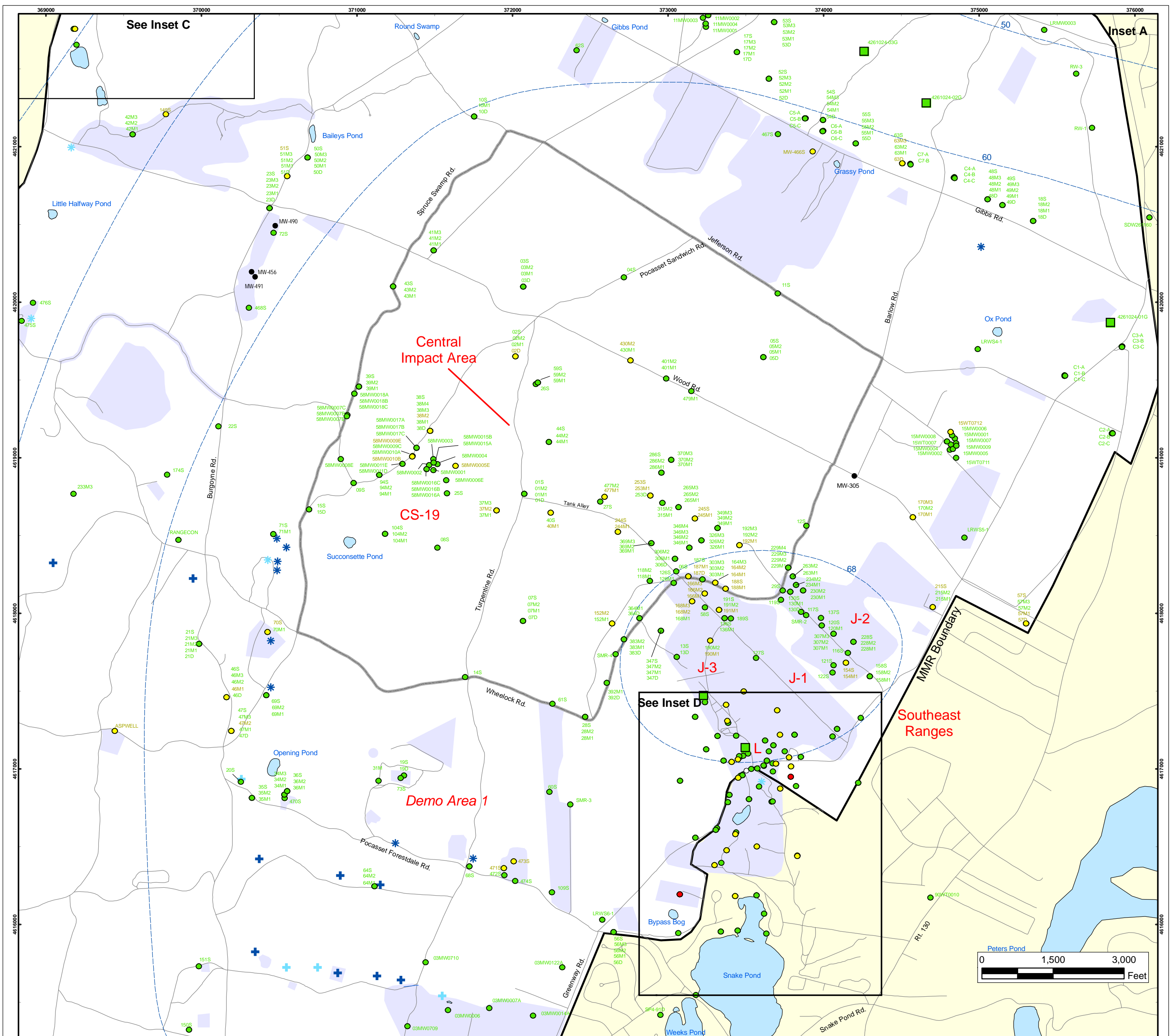




**Semi-Volatile Organic Compounds (Excluding BEHP) in Groundwater  
 Compared to Maximum Contaminant Level/Health Advisories  
 Validated Data as of 03/31/08**

AMEC Earth & Environmental, Inc.  
 Westford, Massachusetts

FIGURE  
**5**



### Semi-Volatile Organic Compounds (Excluding BEHP) in Groundwater Compared to Maximum Contaminant Level/Health Advisories Validated Data as of 03/31/08

- Validated Detection Greater than or Equal to Maximum Contaminant Level/Health Advisories
- Validated Detection Less than Maximum Contaminant Level/Health Advisories
- Validated Non-Detect
- Data Pending
- Proposed Monitoring Well
- Military Range Areas
- ✚ Current Gun Position
- ✚ Current Mortar Position
- ✚ Old Gun Position
- ✚ Old Mortar Position
- Validated Non-Detect Water Supply Well
- Water Table Contour (Feet NGVD), AMEC, September 2003

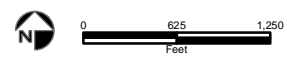
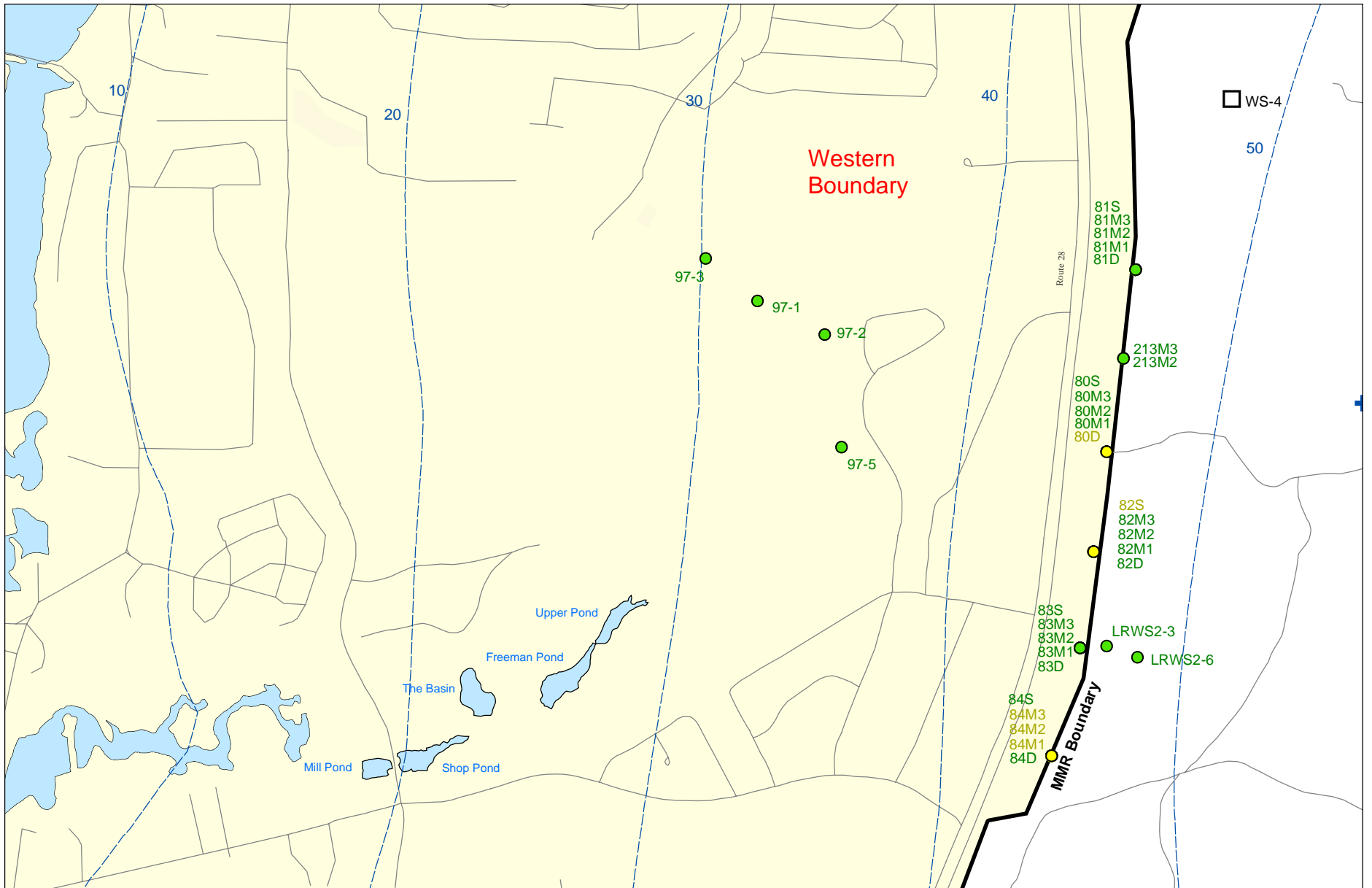
Note: Map dot colors are representative of the highest historical concentration at each well and not the current concentration level. Historical data presented on this figure range from November 1996 through 2007.

**Impact Area Groundwater Study Program**

AMEC Earth & Environmental, Inc.  
Westford, Massachusetts

**Inset Map**

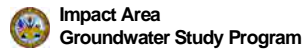
**FIGURE 5**



Sources & Notes:  
 Base map data from US Geological Survey  
 7 1/2 minute Topographic maps.  
 Source: Office of Geographic and  
 Environmental Information (MassGIS)  
 Commonwealth of Massachusetts  
 Executive Office of Environmental Affairs

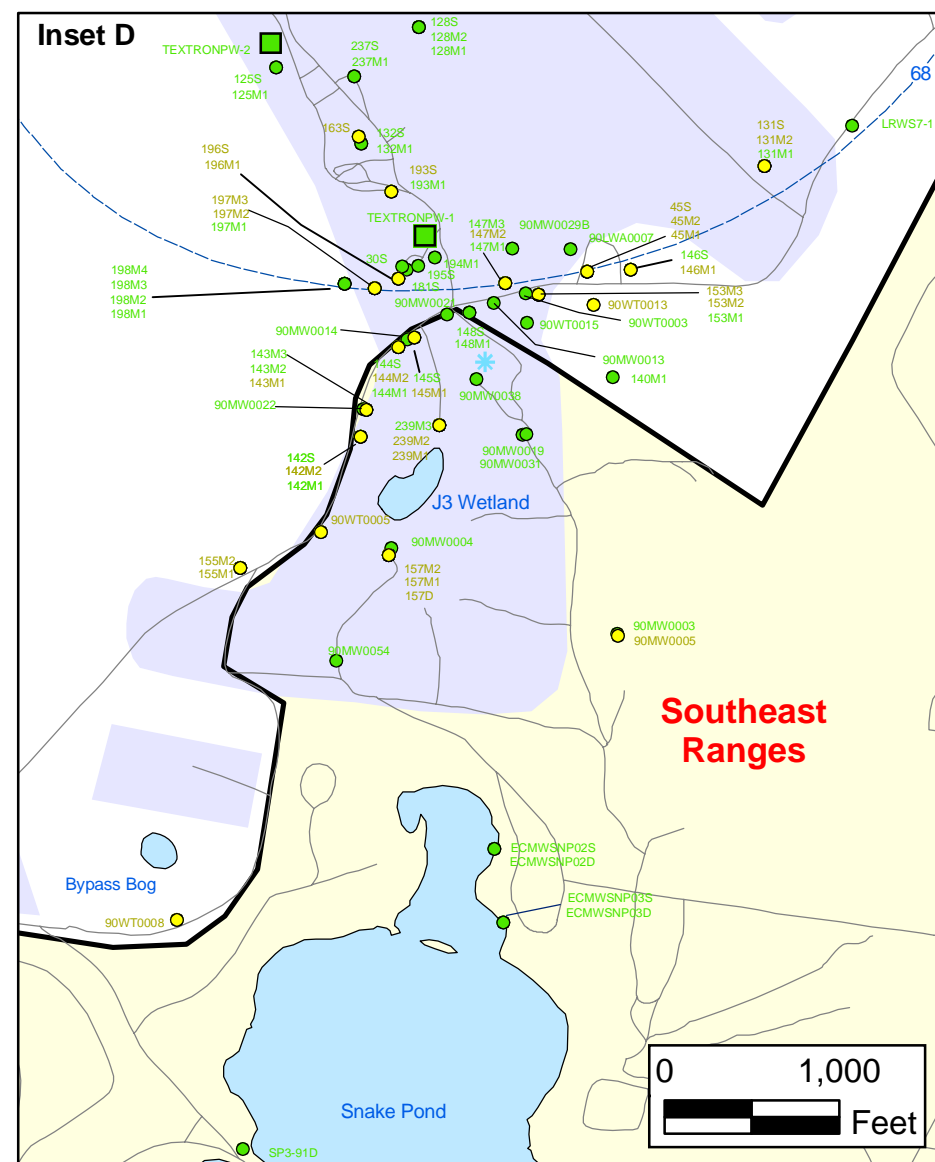
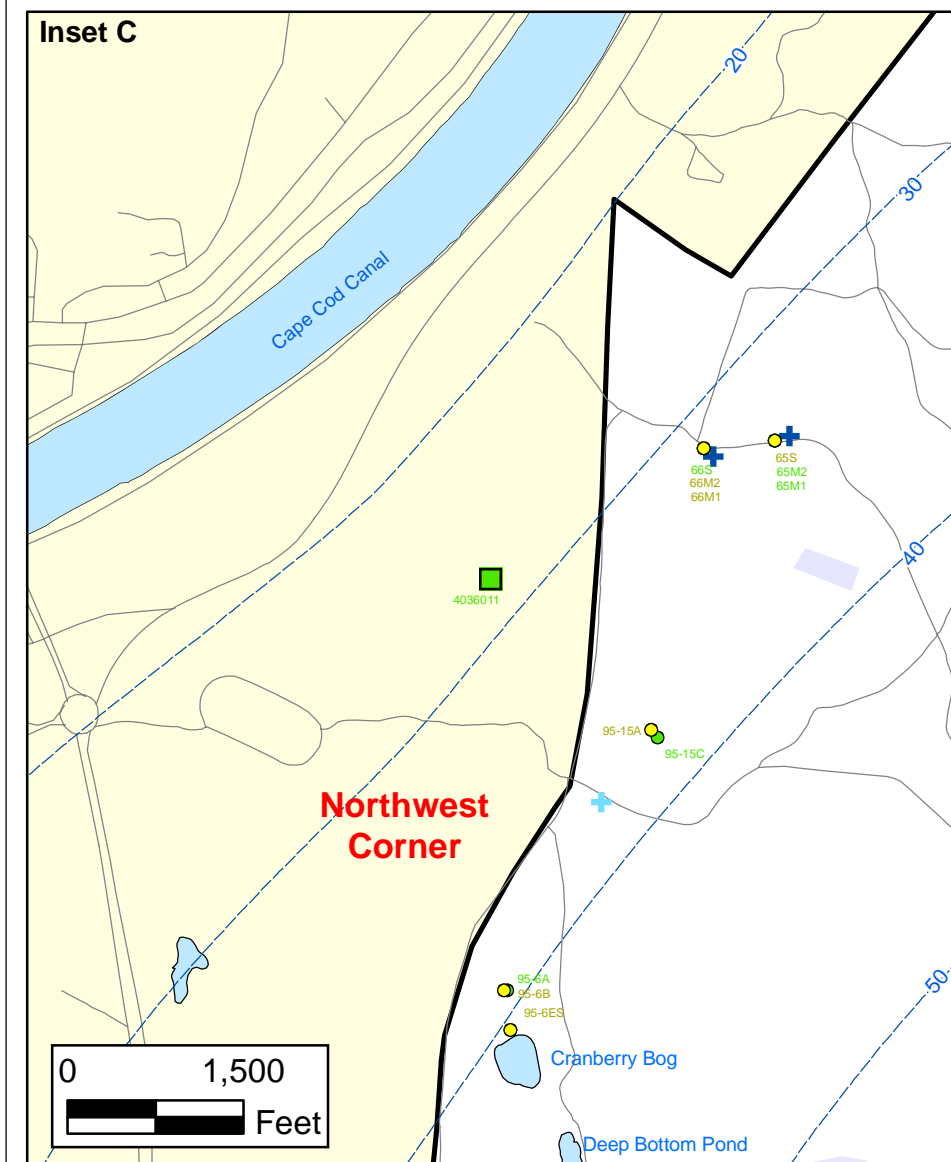
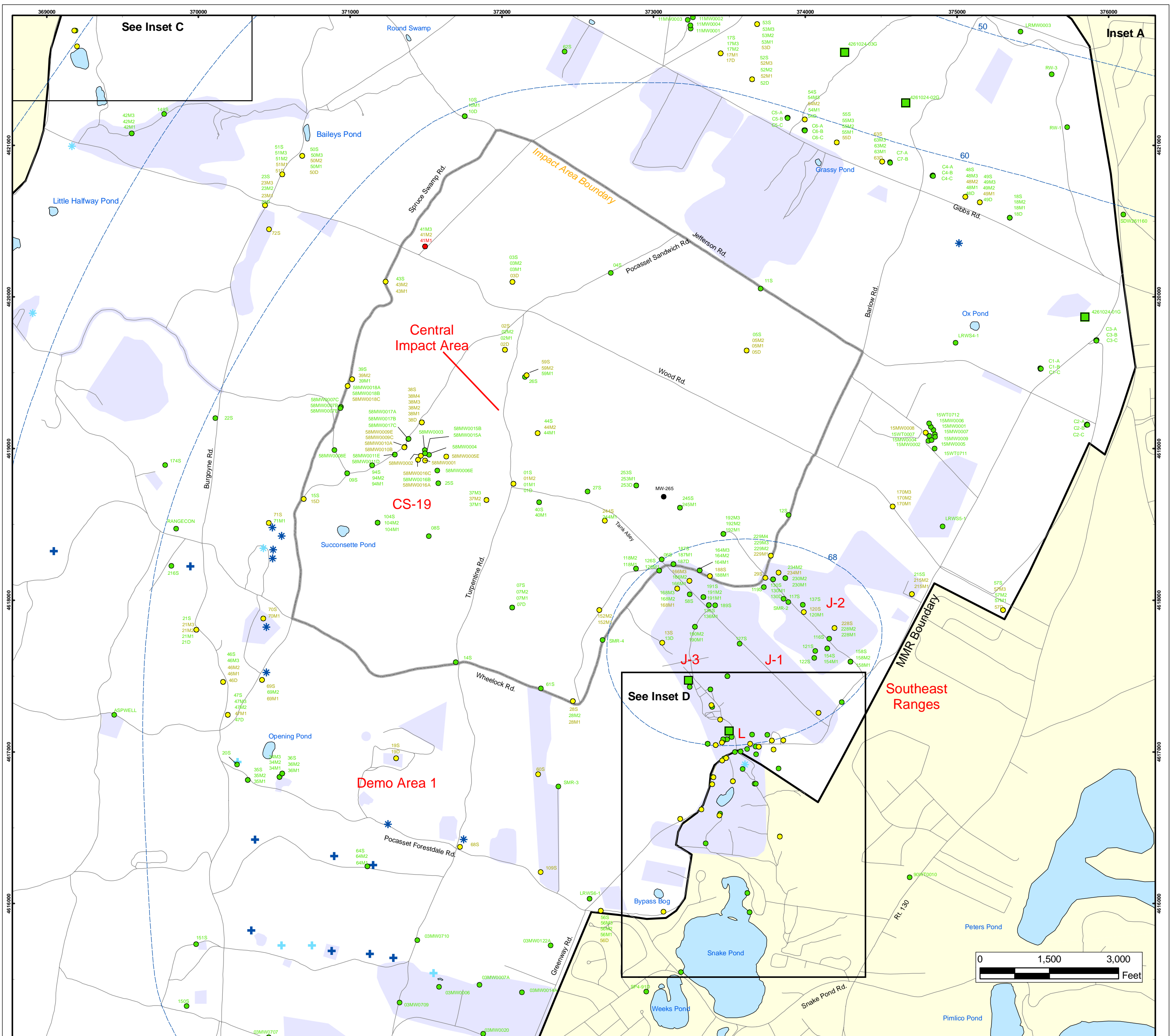
- Validated Detection Less than Maximum Contaminant Level/Health Advisories
- Validated Non-Detect
- Proposed Water Supply Well
- + Current Gun Position
- Water Table Contour (Feet NGVD), AMEC, September 2003

**Semi-Volatile Organic Compounds (Excluding BEHP) in Groundwater Compared to Maximum Contaminant Level/Health Advisories**  
 Validated Data as of 03/31/08



Note: Map dot colors are representative of the highest historical concentration at each well and not the current concentration level. Historical data presented on this figure range from November 1996 through 2007.

*Inset Map B* **FIGURE 5**



### Herbicides and Pesticides in Groundwater Compared to Maximum Contaminant Level/Health Advisories Validated Data as of 03/31/08

- Validated Detection Greater than or Equal to Maximum Contaminant Level/Health Advisories
- Validated Detection Less than Maximum Contaminant Level/Health Advisories
- Validated Non-Detect
- Data Pending
- Proposed Monitoring Well
- Military Range Areas
- + Current Gun Position
- \* Current Mortar Position
- + Old Gun Position
- \* Old Mortar Position
- Validated Non-Detect Water Supply Well
- Water Table Contour (Feet NGVD), AMEC, September 2003

Note: Map dot colors are representative of the highest historical concentration at each well and not the current concentration level. Historical data presented on this figure range from November 1996 through 2007.

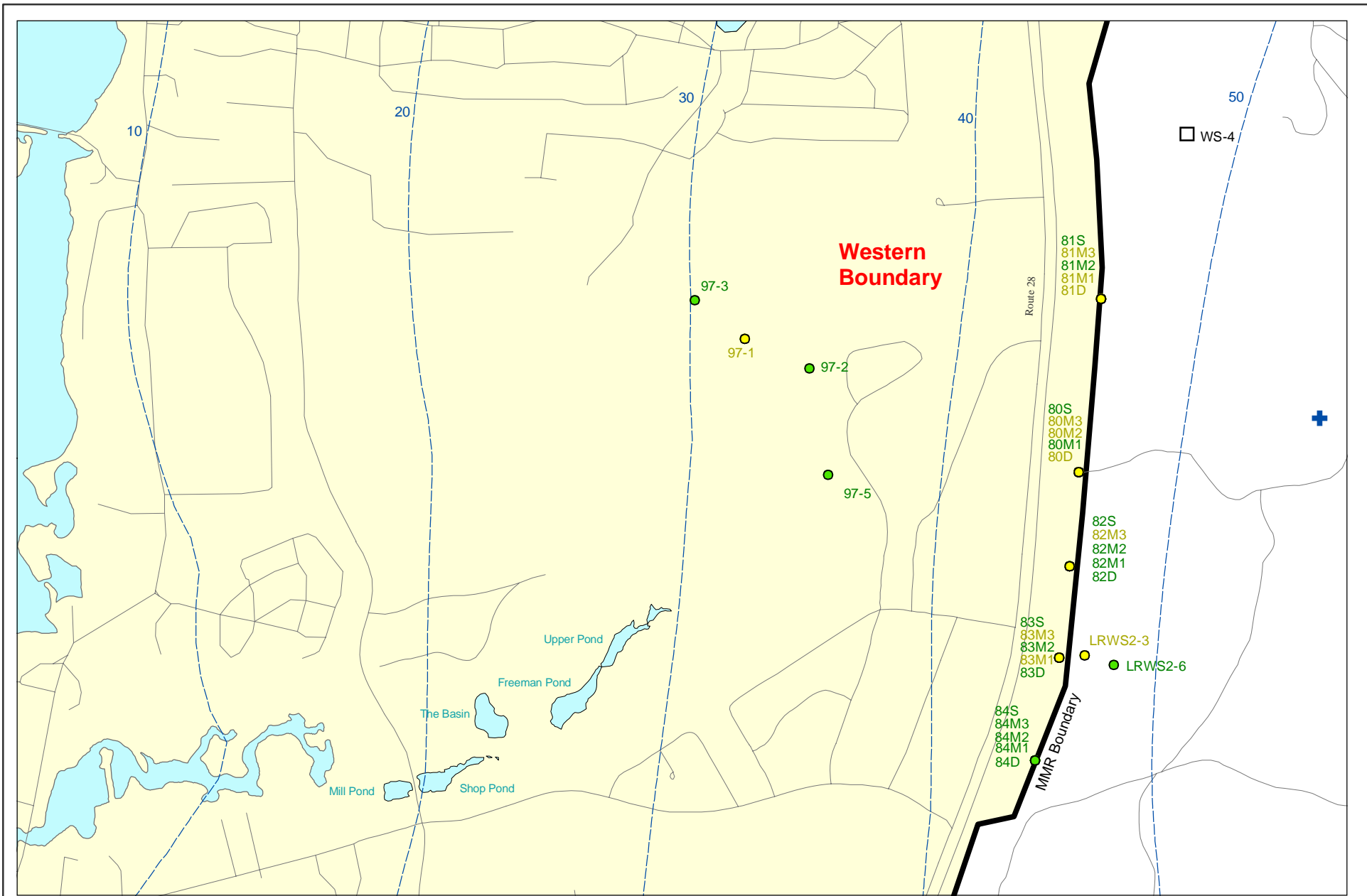
**Impact Area  
Groundwater Study Program**

Sources & Notes  
Base map data from US Geological Survey  
7 1/2 minute Topographic Maps  
Source: Office of Geographic and  
Environmental Information (MassGIS)  
Commonwealth of Massachusetts  
Executive Office of Environmental Affairs

AMEC Earth & Environmental, Inc.  
Westford, Massachusetts

**FIGURE  
7**

**Inset Map**

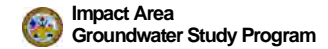


**Sources & Notes:**  
 Base map data from US Geological Survey  
 7 1/2 minute Topographic maps.  
 Source: Office of Geographic and  
 Environmental Information (MassGIS)  
 Commonwealth of Massachusetts  
 Executive Office of Environmental Affairs

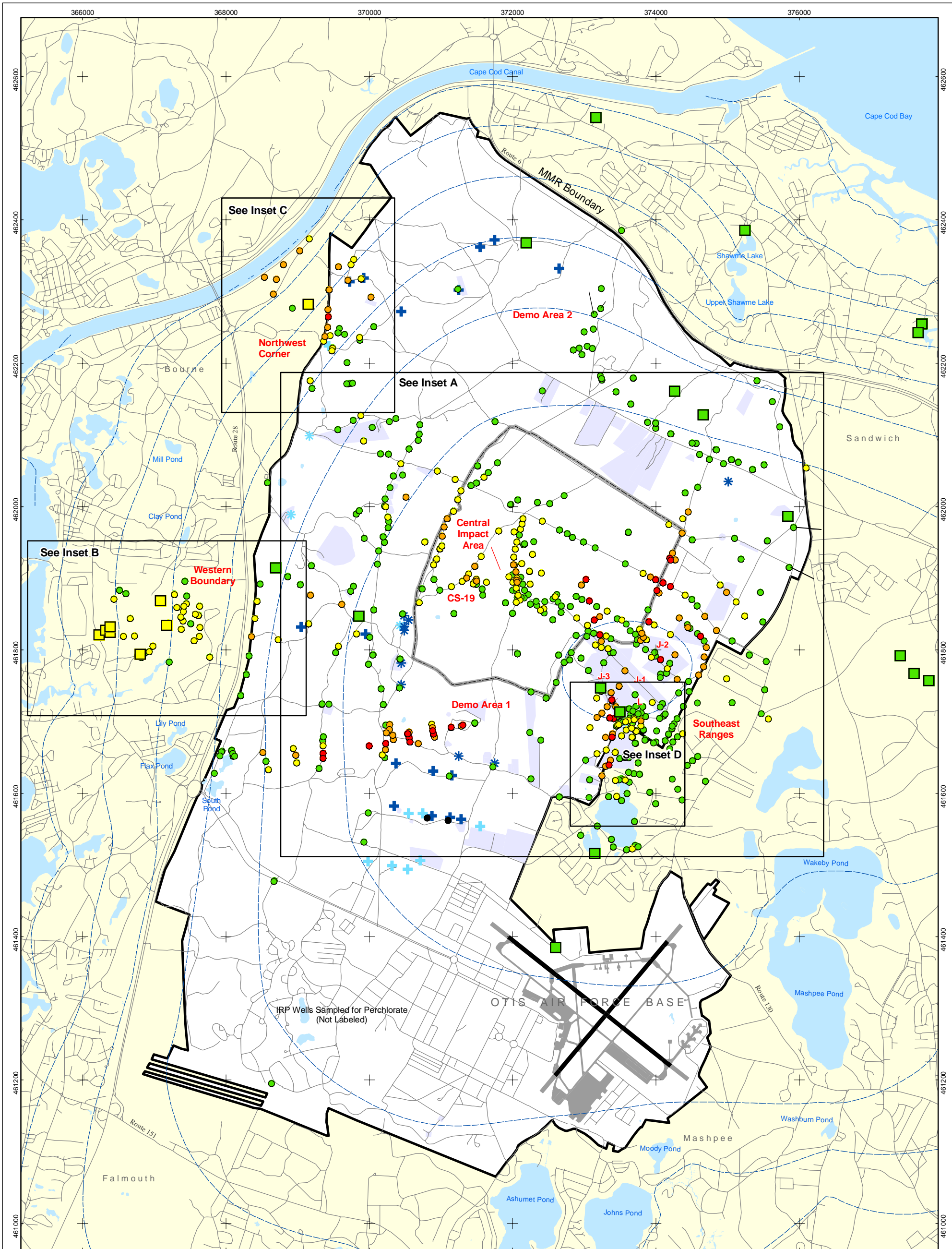
- Validated Detection Less than Maximum Contaminant Level/Health Advisories
- Validated Non-Detect
- Proposed Water Supply Well
- + Current Gun Position
- Water Table Contour (Feet NGVD), AMEC, September 2003

Note: Map dot colors are representative of the highest historical concentration at each well and not the current concentration level. Historical data presented on this figure range from November 1996 through 2007.

**Herbicides & Pesticides in Groundwater Compared to Maximum Contaminant Level/Health Advisories Validated Data as of 03/31/08**



AMEC Earth & Environmental, Inc.  
 Westford, Massachusetts




- Validated Detection Greater than or Equal to 24 ppb
- Validated Detection Greater than or Equal to 2 and Less than 24 ppb
- Validated Detection Greater than Non-Detect and Less than 2 ppb
- Validated Non-Detect

- Data Pending
- Proposed Monitoring Well
- ⊕ Current Gun Position
- ⊛ Current Mortar Position
- ⊕ Old Gun Position
- ⊛ Old Mortar Position

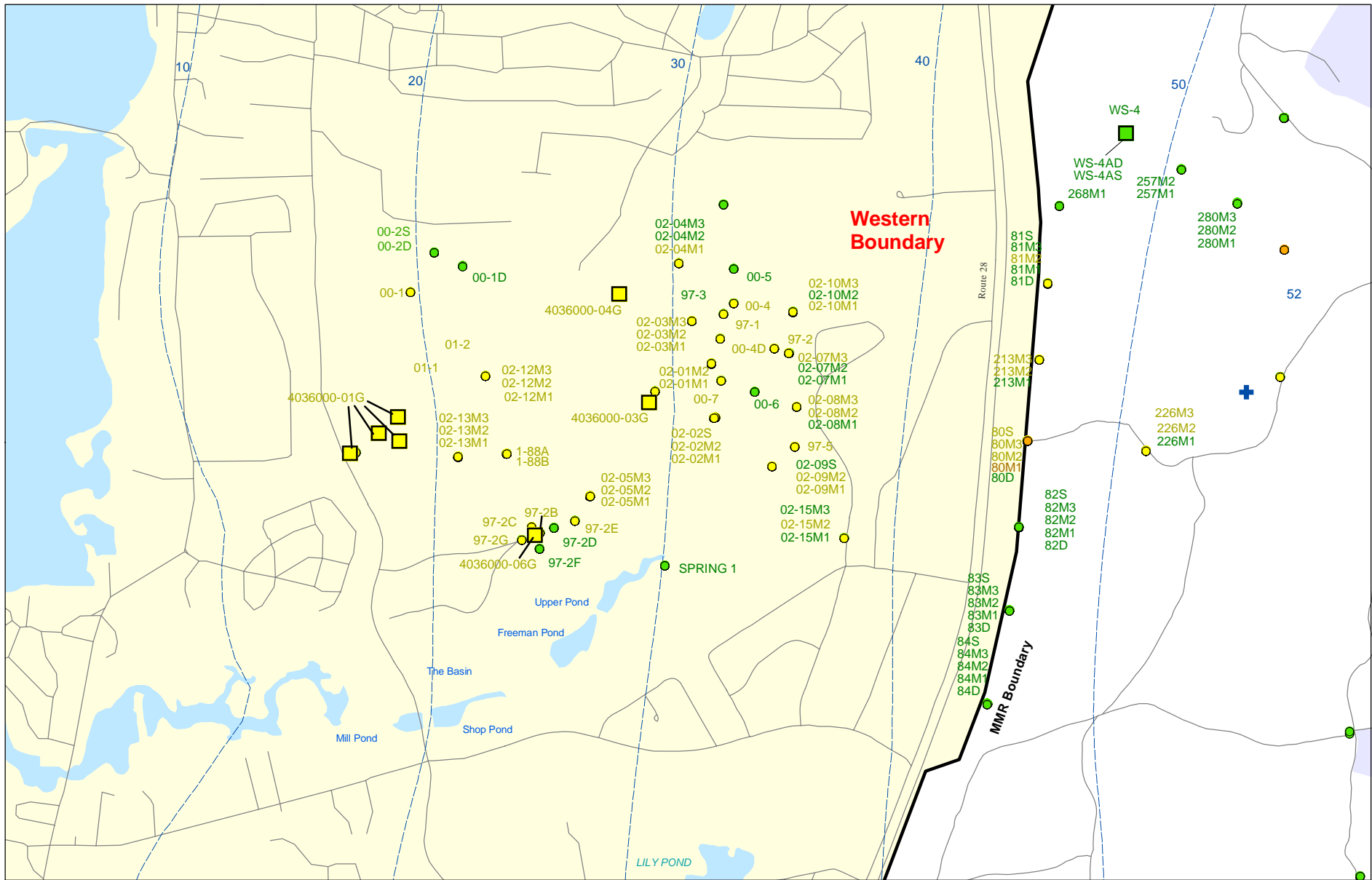
- Validated Non-Detect Water Supply Well
- Validated Detection Less than 2 ppb Water Supply Well
- Proposed Water Supply Well
- Water Table Contour (Feet NGVD) AMEC, September 2003
- Military Range Areas

Note: Map dot colors are representative of the highest historical concentration at each well and not the current concentration level. Historical data presented on this figure range from November 1996 through 2007.

  
 0 2,000 4,000  
 Feet

Sources & Notes  
 Base map data from US Geological Survey  
 7 1/2 minute Topographic Maps  
 Source: Office of Geographic and  
 Environmental Information (MassGIS)  
 Commonwealth of Massachusetts  
 Executive Office of Environmental Affairs

**Perchlorate in Groundwater  
Compared to a 2 ppb Concentration  
Validated Data as of 12/31/08**



Sources & Notes:  
 Base map data from US Geological Survey  
 7 1/2 minute Topographic maps.  
 Source: Office of Geographic and  
 Environmental Information (MassGIS)  
 Commonwealth of Massachusetts  
 Executive Office of Environmental Affairs

- Validated Detection Greater than or Equal to 2 and Less than 24 ppb
- Validated Detection Greater than Non-Detect and Less than 2 ppb
- Validated Non-Detect

Note: Map dot colors are representative of the highest historical concentration at each well and not the current concentration level.  
 Historical data presented on this figure range from November 1996 through 2007.

- Validated Detection Less than 2 ppb Water Supply Well
- Validated Non-Detect Water Supply Well
- + Current Gun Position
- Water Table Contour (Feet NGVD) AMEC, September 2003

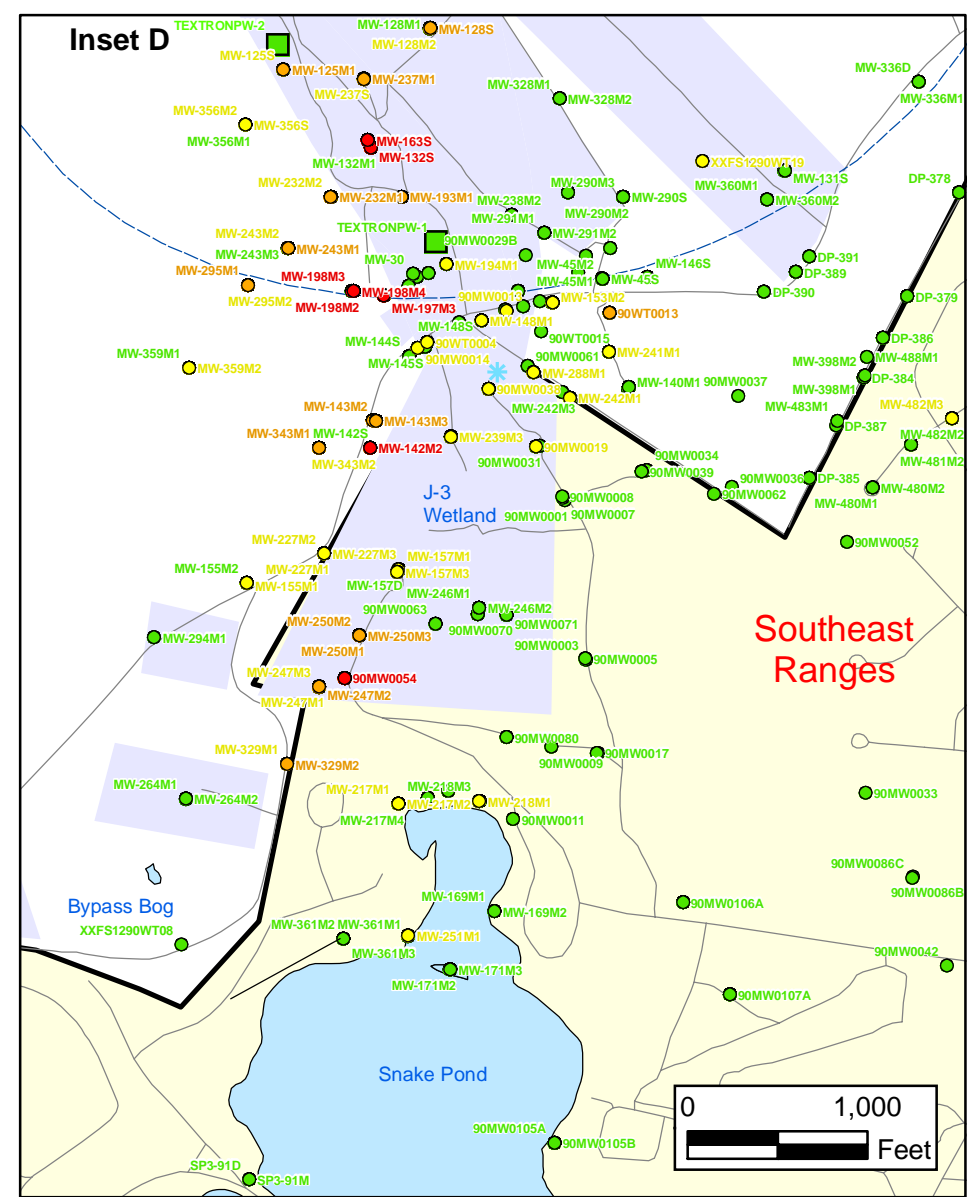
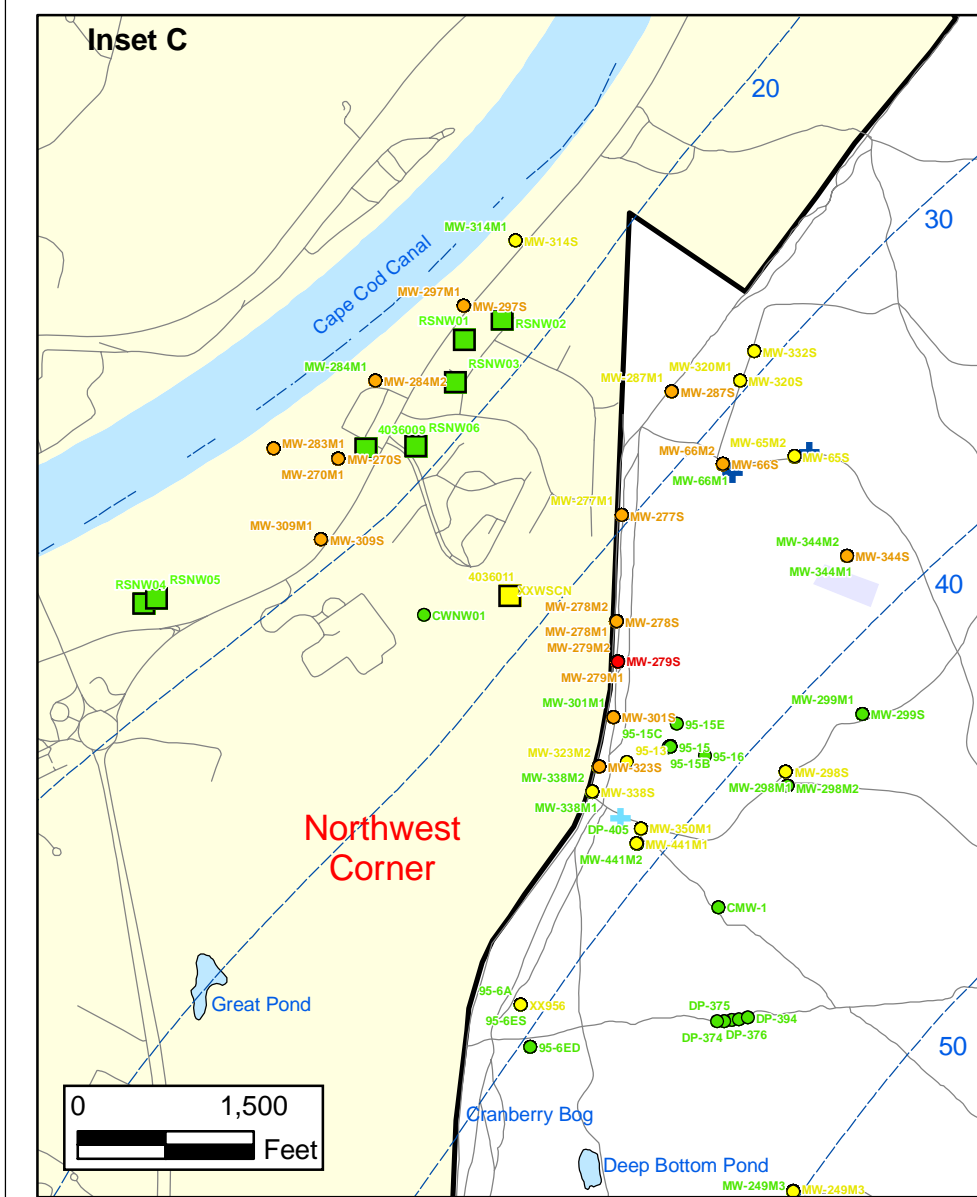
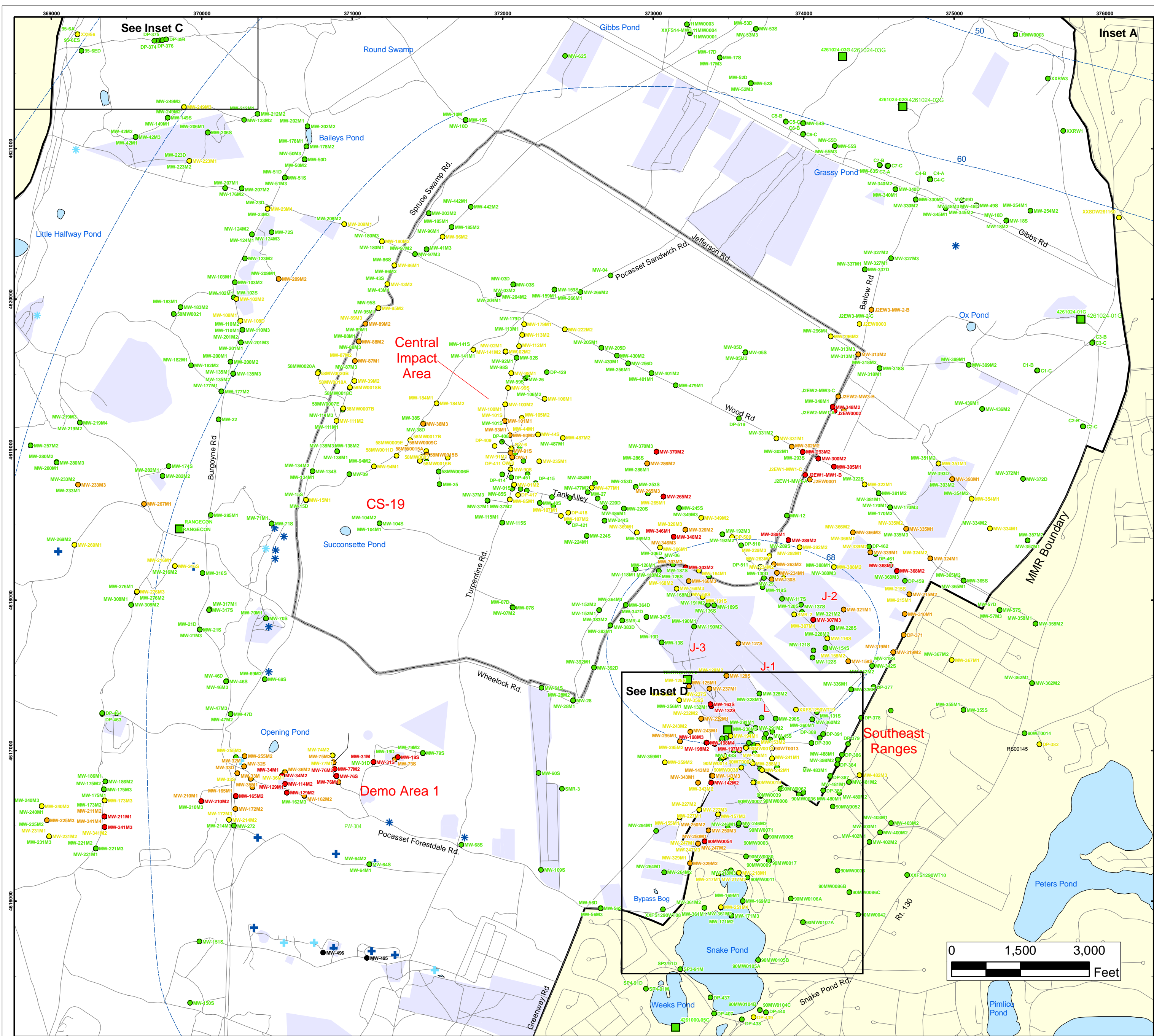
### Perchlorate in Groundwater Compared to a 2 ppb Concentration Validated Data as of 12/31/08



ECC-MMR  
 Cape Cod, Massachusetts

FIGURE  
 Inset Map B **8**





### Perchlorate in Groundwater Compared to a 2 PPB Concentration Validated Data as of 12/31/08

- Validated Detection Greater than or Equal to 24 ppb
- Validated Detection Greater than or Equal to 2 and Less than 24 ppb
- Validated Detection Less than 2 ppb
- Validated Non-Detect
- Data Pending
- Military Range Areas
- + Current Gun Position
- \* Current Mortar Position
- + Old Gun Position
- \* Old Mortar Position
- Validated Non-Detect Water Supply Well
- Validated Detection Less Than 2 ppb Water Supply Well
- Water Table Contour (Feet NGVD), AMEC, September 2003

Note: Map dot colors are representative of the highest historical concentration at each well and not the current concentration level. Historical data presented on this figure range from November 1996 through 2007.

**Impact Area  
Groundwater Study Program**

ECC-MMR  
Cape Cod, Massachusetts

**FIGURE  
8**