



Impact Area Groundwater Study Program Update and Look-ahead 2026

JBCC Cleanup Team May 27, 2026

Ms. Jodi Lyn Cutler

IAGWSP Remediation Manager



Operable Units Status

OU with Groundwater Treatment:

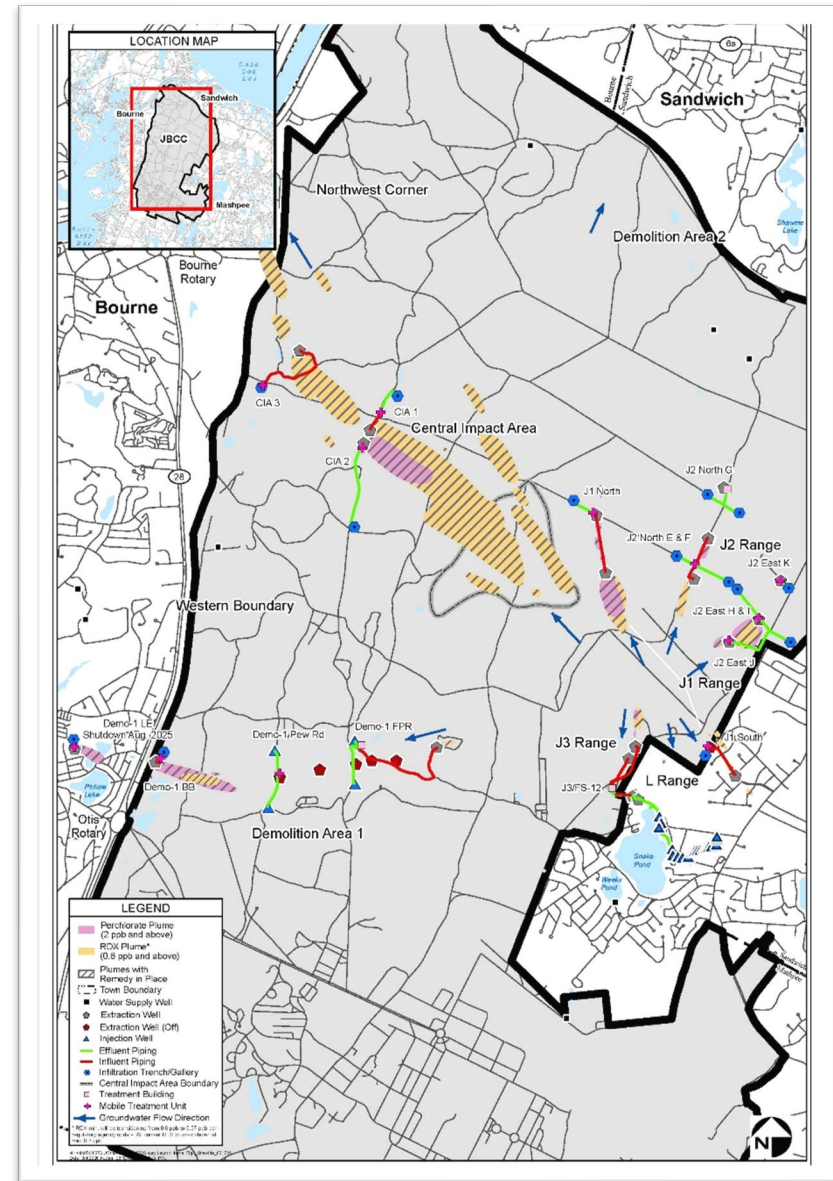
- Central Impact Area
- Demolition Area 1
- J-1 Range (North & South)
- J-2 Range (North & East)
- J-3 Range

OUs in Closure Process:

- L Range

OUs with No Further Action/Closed:

- Gun and Mortar Positions (NFA)
- Former K Range (NFA)
- Former A Range
- Western Boundary
 - BA-4 Disposal Area
- Small Arms Ranges
- Training Areas
- Northwest Corner
- Demolition Area 2





Ongoing and Upcoming Projects for 2026

◆ Decision Document (DD) Addendum

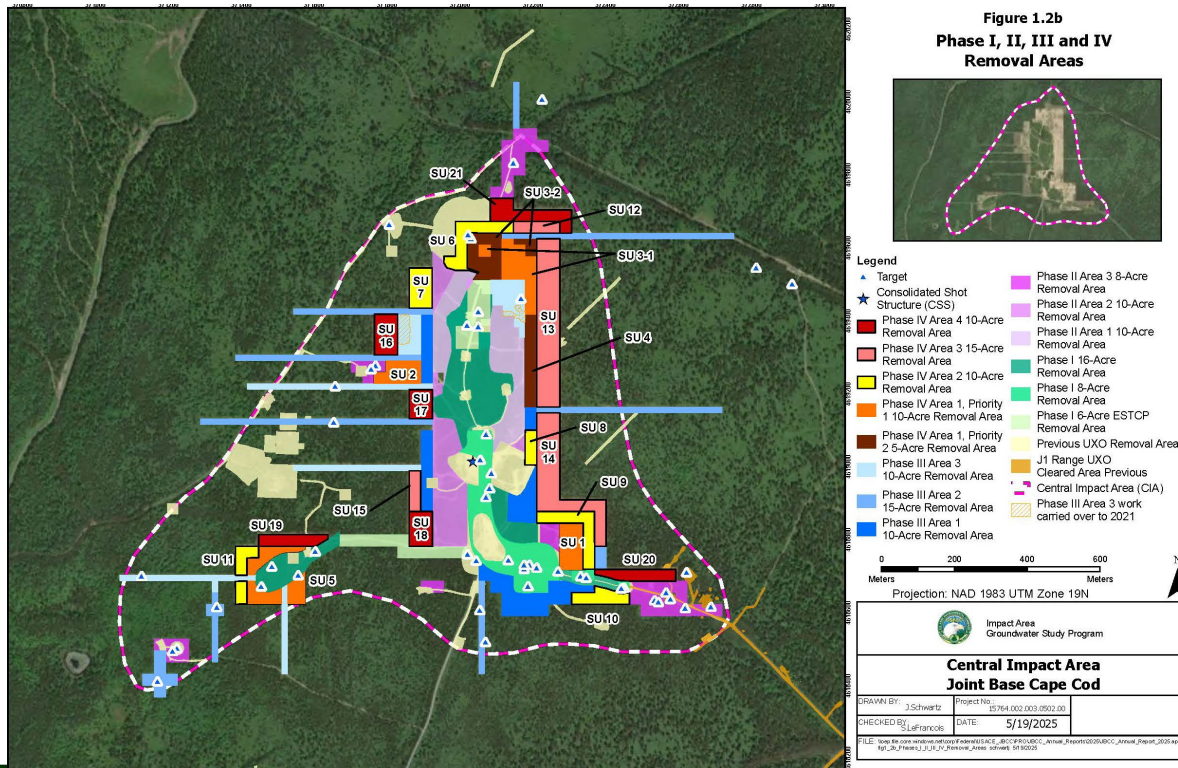
- Required due to an update to the Environmental Protection Agency (EPA) Regional Screening Level (RSL) for tap water for RDX.
 - New tap water RSL for RDX of 0.97 micrograms per liter ($\mu\text{g/L}$), is higher than the current cleanup level of 0.6 $\mu\text{g/L}$ used in the DDs.
- Addendum modifies the DDs for the Central Impact Area (CIA), Demolition Area 1, J-1 Range, J-2 Range, J-3 Range, and L Range.
- At the L Range, the new cleanup level has already been met, and site closeout can begin.
- At the CIA, it is anticipated that the remedy will achieve cleanup standards ten years sooner than originally estimated.
- For Demolition Area 1, J-1 Range, J-2 Range and J-3 Range, raising the cleanup level results in minor reductions in time to achieve cleanup objectives.



Ongoing and Upcoming Projects for 2026

◆ CIA: Continue with UXO Source Removal

- Contractor selection finalized in late April.
- Approximately five to ten acres will be investigated during the 2026 field season.
 - Exact locations to be determined in consultation with EPA and the Massachusetts Department of Environmental Protection (MassDEP).
- Work will also include carry over of approximately 0.75 acres that was not completed in 2025.

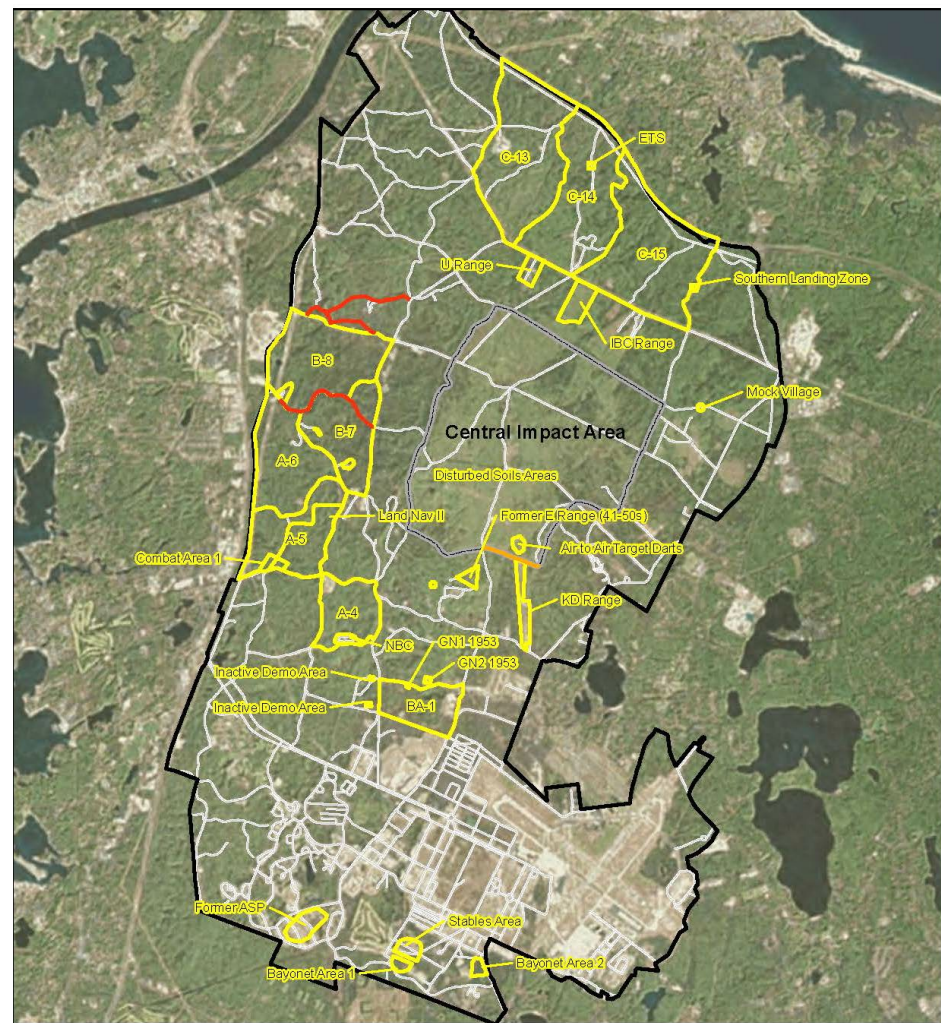




Ongoing and Upcoming Projects for 2026

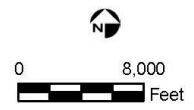
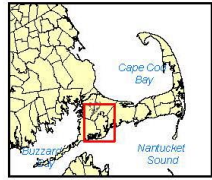
◆ Closure of Small Arms Ranges and Training Areas Operable Units

- Project notes have been developed to document that all post-DD requirements under the Training Areas Operable Unit (OU) DD and the Small Arms Ranges DD have been completed.
 - The Training Areas DD required limited actions of data review and/or confirmatory sampling, and geophysical screening for six Training Areas: B-7, C-15, 1949 Engineer Training Site, Former E Range, KD Range (West) and IBC Range.
 - The Small Arms Ranges required additional action to be taken to address residual contamination. Soil sampling and/or removal actions were implemented at KD East, Former B, Former C, and Former D Ranges. B, C, G, N, Former M-2, and Former N Ranges.
- All activities have been completed, and completion of work reports have been issued for both OUs.
- EPA issues Certificates of Completion/Compliance that certifies that the required activities have been performed in accordance with the DDs.
- Operational-Active ranges have an Operations, Maintenance and Monitoring Plan (OMMP) in place that outline range-specific monitoring. Long-term groundwater monitoring at these ranges is conducted by the Massachusetts Army National Guard with the results documented in a separate report, as required by the respective OMMPs.



- Training Area
- Demo Area 3
- Demo Area 4
- Impact Area Boundary
- JBCC Boundary
- Roads

Figure 1-1
Location of Training Areas



- Small Arms Range
- Impact Area Boundary
- JBCC Boundary

Figure 1-1
Location of Small Arms Ranges





Ongoing and Upcoming Projects for 2026

◆ Closure of Northwest Corner and Demolition Area 2 OUs

- Both sites had monitored natural attenuation and land use controls as the remedy.
 - For Demolition Area 2, RDX concentrations have been below the cleanup level for three consecutive years.
 - For Northwest Corner, there have been no detections of perchlorate exceeding the health advisory of 2 parts per billion since 2013.
- Demonstration of Compliance Reports were finalized to document that all cleanup objectives set forth in the DDs have been met.
 - The Demonstration of Compliance report includes a human health risk assessment to assess hypothetical exposures to residual concentrations of explosives in groundwater.
- EPA issued Certificates of Compliance for both sites that certifies that the soil removals (at Demo 2) and groundwater monitoring have been performed in accordance with the DD and cleanup objectives have been met.



Ongoing and Upcoming Projects for 2026

◆ Operations & Maintenance (O&M) Activities and System Optimizations

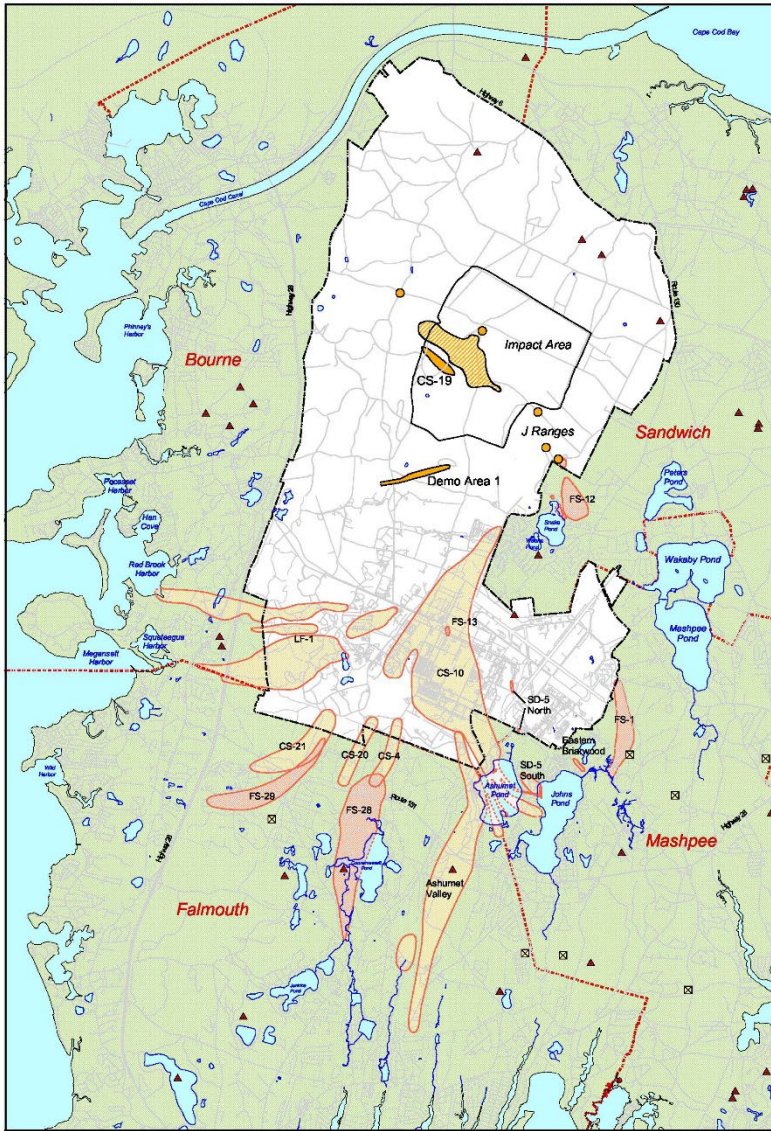
- **Daily system checks** are performed to ensure treatment system buildings and infrastructure are operational and have not been damaged.
- **O&M duties** and monthly sampling at all groundwater treatment facilities will continue. This work monitors treatment plant performance to ensure that they are removing contaminants, as designed.
- **Sampling** crews are continually performing annual and semi-annual groundwater monitoring. Crews rotate through groundwater sites during the year to complete the necessary sampling.
- **Annual reports** with sampling results are prepared and presented to EPA and MassDEP at technical meetings.
 - Includes periodic updates to plume shells, J-1 South plume being updated in 2026.
 - Finalize Comprehensive PFAS Report
- **Annual Land Use Controls** report is being finalized.
 - Documents annual activities that minimize the potential for human exposure to contamination by limiting land or resource use.



Questions?



JBCC Groundwater Plumes Map



Scale 1:63,360

Groundwater Findings Massachusetts Military Reservation June 2001

MCL - Maximum Contaminant Level for drinking water
 ppb - parts per billion
 TCE - Trichloroethylene - a solvent
 PCE - Tetrachloroethylene - a solvent
 EDX - Ethylene Dichloride - a flammable liquid
 RDX - Royal Demolition Explosive - an explosive compound

IRP plumes are named for source areas, abbreviated as follows:
 FS - Fuel Spill CS - Chemical Spill
 LF - Land Fill SD - Storm Drain

TCE or PCE plume
 Concentrations exceed MCL
 TCE MCL = 5.0 µg/L
 PCE MCL = 0.5 µg/L
 Concentrations exceed MCL
 EDX MCL = 0.02 µg/L
 Concentrations exceed MCL
 RDX MCL = 0.07 µg/L
 Fuel plume
 The following contaminants exceed associated MCL (GW) or RBC Concentration Standards:
 CS-C8 aliphatic hydrocarbons, GW1 = 300 µg/L
 CS-C12 aliphatic hydrocarbons, GW1 = 300 µg/L
 CS-C12 aromatic hydrocarbons, GW1 = 300 µg/L
 CS-C12 aromatic hydrocarbons, GW1+ = 500 µg/L
 1,2,4-TMB, RSL = 50 µg/L
 1,3,5-TMB, RSL = 40 µg/L
 2-methylnaphthalene, GW1 = 10 µg/L
 PFAS plume - Concentrations exceed MCL/PEP
 PFAS MCL = 10.0 µg/L (shown where relevant)

Plumes with Remedial in Place
 IRP PFAS Source Area
 MWSP Site - Active
 IRP Source Area - Active
 Extraction Well
 Extraction Well (CR)
 Rejection Well (CR)
 Navigation Well (CR)
 Outfall Bulb
 Treatment Facility
 Managed Water Supply Well
 Wind Turbine

Town Boundary
 Infiltration Trench/Gallery (O)
 Infiltration Trench/Gallery (OR)
 IRP Land Use Control (LUC) Boundary
 MOWSP Land Use Control (LUC) Boundary
 Treatment System Pipeline:
 - Inland - Effluent

